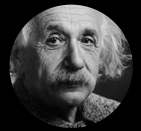


INTERNATIONAL

Televés[®]

PRODUCT GUIDE 2020



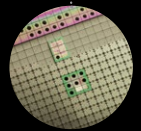
ALBERT EINSTEIN **IQ: 190**
Developer of the theory of relativity



MARIE CURIE **IQ: 200**
Pioneer in the field of radioactivity



WILLIAM JAMES SIDIS **IQ: 300**
At age 8, he spoke 8 languages
At age 40, he spoke 40 languages



INTELLIGENT ANTENNA
WITH TFORCE TECHNOLOGY

Ellipse[®]

INTELLIGENCE TAKEN TO THE LIMIT

A new concept of DTT antenna that eliminates any interference even
in the limits of the TV band,
combining a break-through design in a 100% stainless mechanical
frame that houses the new generation of TForce electronics,
featuring a revolutionary SAW filter.

ellipse.televes.com

Televes[®]

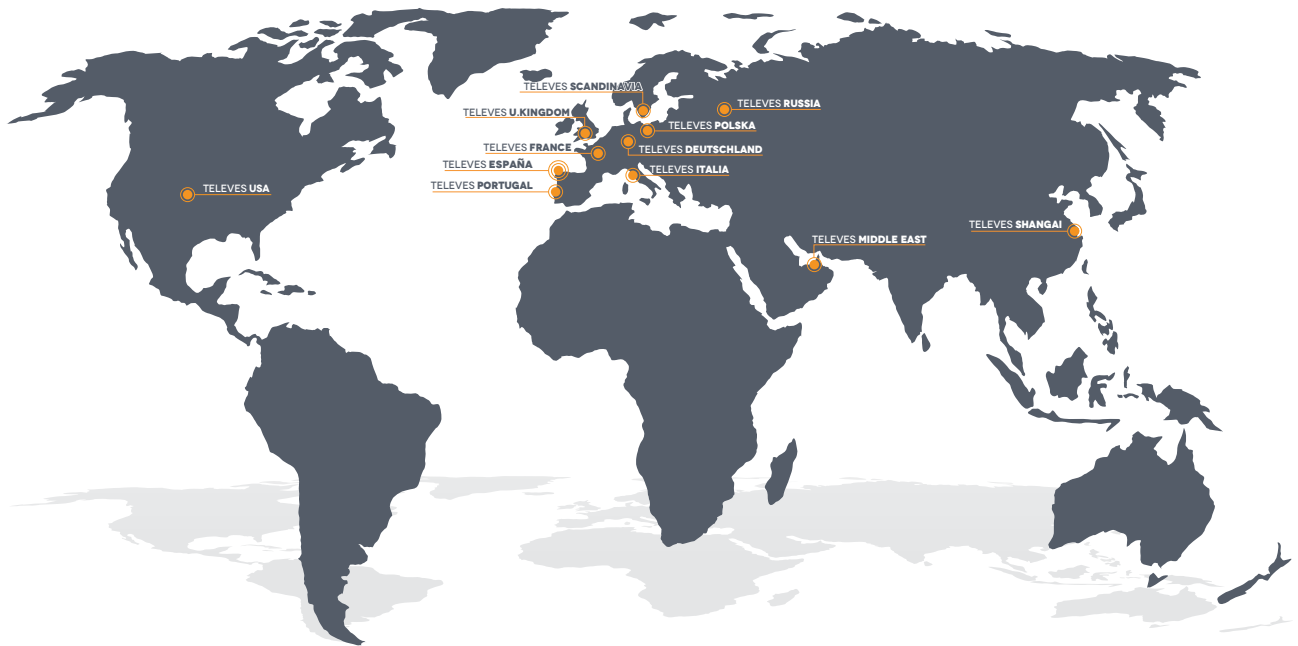
www.televes.com | www.televescorporation.com



Televes Corporation[®]

1 GPON TECHNOLOGY	5	11 AMPLIFICATION.....	33
FibreData Solutions:		Mast amplification.....	33
GPON (<i>Gigabit-capable Passive Optical Networks</i>).....	5	MATV domestic amplifiers (47...694/790/862MHz)	34
WaveData	7	SMATV domestic amplifiers (47...2150MHz)	34
CoaxData Series.....	7	CATV domestic amplifiers (5...862MHz).....	34
CoaxData Series.....	7	Sky pass amplifiers.....	34
Networks Electronics.....	7	Launch amplifiers: MiniKom "EasyF" Series	35
2 ARANTIA TV	8	Launch amplifiers: MiniKom "F" Series.....	35
Compact HE-21 IPTV Headend	8	Launch amplifiers: DTKom Series.....	36
Modular Headend IPH2011	8	Amplifiers: MicroKom Series.....	36
Transcoder.....	8	Programmable Amplification: Avant Series	37
Interactive Television Headend (ITV).....	9	T12 Series.....	38
IPTV - ITV Personalization & options.....	9	12 MULTISWITCHES	39
IPTV - ITV in room equipment.....	9	NevoSwitch Series: Stand alone & Cascade multiswitches	39
IPTV - ITV Accessories	9	EasySwitch Series	40
3 PROCESSING HEADENDS.....	10	Cabinets.....	40
T.OX Streamers IP.....	10	13 DISTRIBUTION	41
T.OX series	13	Splitters with "EasyF" connector.....	41
Wall mount	14	Splitters with "F" connector	41
Modulator + Encoders (Rack mount).....	14	Taps with "EasyF" connector	42
4 FIBER OPTICS	15	Taps with "F" connector.....	42
T.OX Series	15	Outlets	44
19" Rack format.....	16	Connectors	45
Standalone format.....	16	14 COAXIAL CABLE	46
F.O. Distribution (Optical nodes).....	16	Coaxial cables.....	46
F.O. Distribution.....	17	Underground cables.....	47
F.O. Cables (ITU-T G657A2).....	18	Microcable	47
Accessories.....	18	Accessories.....	47
5 FIBER OPTICS (OPTICAL LNB)	19	15 DATA ENCLOSURES AND CABLES.....	49
F.O. Distribution (Optical LNB).....	19	Racks, enclosures and UAP.....	49
6 MEASURING EQUIPMENT	20	Data cables	49
Field strength meters	21	Data connectors	49
Fiber optics.....	22	16 SET TOP BOXES & HOME ACCESSORIES.....	50
Signal generators.....	22	DTH STBs.....	50
7 TERRESTRIAL ANTENNAS	23	Modulators	50
Intelligent BOSS antennas	23	Audio/Video & IR transmission.....	50
Passive antennas.....	25	IR over RF transmission.....	50
Extended 4G Coverage	25	IR over coaxial cable transmission.....	50
Masts & supports.....	26	17 DO IT YOURSELF	51
Steel wires.....	26	Antennas.....	51
8 SATELLITE ANTENNAS	27	LNBs.....	51
QSD Series (<i>Quality Satellite Dishes</i>).....	27	Digital receivers.....	51
ISD Series (<i>Inox Satellite Dishes</i>)	27	LTE filters	51
Satellite dishes.....	27	Modulators	52
LNBs.....	28	Terrestrial amplification kits.....	52
Brackets & fixing accessories	28	Power supply units.....	52
9 TOWERS	29	Domestic amplifiers.....	52
Pack Tower	29	Attenuators.....	52
180 SE Tower	29	Combiners	52
180 Tower	29	Splitters	52
Q1500 Tower (<i>Stainless steel</i>).....	29	Outlets	52
360 Tower	30	Coaxial	53
450 Tower	30	Home Accessories.....	54
550 Tower	31	Fiber Optics connection	54
450XL Reinforced Tower.....	31	Audio/Video connection.....	54
550XL Reinforced Tower.....	31	Mast accessories.....	54
10 FILTERS & COMBINERS.....	32		
LTE Filters	32		
Combiners	32		

Televes® in the world



SPAIN (HEAD OFFICE)

Televes S.A.
Rúa B. de Conxo, 17
15706 Santiago de Compostela
42° 51' 43.6212" N, 8° 33' 27.702" W
T. +34 981522200
F. +34 981522262
televes@televes.com

BARCELONA

Carrer Sant Ferrán, 27
08940 Cornellà de Llobregat (Barcelona)
41° 21' 9.054" N, 2° 5' 7.8324" E
T. +34 902686415
F. +34 934745006
barcelona@televes.com

LAS PALMAS

Gral. Mas de Gaminde, 26
35006 Las Palmas
28° 7' 55.884" N, 15° 26' 1.356" W
T. +34 902686407
F. +34 928231366
laspalmas@televes.com

MADRID

Paseo los Pontones, 11
28005 Madrid
40° 24' 22.5576" N, 3° 42' 46.35" W
T. +34 902686416
F. +34 914745421
madrid@televes.com

FRANCE

Televes France SAS
1 Rue Louis de Broglie
Parc d'Activités de l'Esplanade
77400 St. Thibault des Vignes (FRANCE)
48° 51' 48.5136" N, 2° 40' 26.0724" E
T. +33 0 1 60 359 210
F. +33 0 1 60 359 040
televes.fr@televes.com

GERMANY

Televes Deutschland GmbH
Küferstraße 20,
73257 Köngen (GERMANY)
48° 40' 42.0168" N, 9° 22' 25.932" E
T. +49 70 244 6860
F. +49 70 246 295
televes.de@televes.com

ITALY

Televes Italia S.r.l.
S. op. Viale Liguria 16,
20068 Peschiera Borromeo (MI) (ITALY)
45° 25' 53.3784" N, 9° 19' 25.3272" E
T. +39 02 516 50604 (RA)
F. +39 02 553 07363
televes.it@televes.com

POLAND

Televes Polska Sp. z o.o.
ul. Jana Długosza 48,
51-162 Wrocław (POLAND)
51° 7' 59.8224" N, 17° 3' 42.8256" E
T. +48 71 790 1115
F. +48 71 790 1112
televes.polska@televes.com

PORTUGAL

Televes Electrónica Portuguesa Lda.
Via Dr. Francisco Sá Carneiro. Lote 17.
ZONA Ind. Maia 1. Sector-X.
4470-518 Barca, Maia (PORTUGAL)
41° 14' 58.344" N, 8° 37' 48.2196" O
T. +351 22 947 8900
F. +351 22 948 8719
GSM +351 96 858 1614
televes.pt@televes.com

LISBON

Rua Augusto Gil, 21A.
1000-518 Lisboa
38° 44' 38" N, 09° 08' 27" O
T. +351 21 793 2537
F. +351 21 793 2418
televes.lisboa@televes.com

RUSSIA

Televes RUSS.
Volokolamskoye shosse, 142, str.6, 603, 617
125464 Moscow (RUSSIA)
55° 49' 46.05" N, 37° 22' 16.45" E
T. +7 495 107 90 95
F. +7 495 107 90 96
televes.russ@televes.com

SCANDINAVIA

Televes Scandinavia AB.
Vannhögsgatan 7,
231 66 Trelleborg (SWEDEN)
55° 23' 05.7" N, 13° 08' 42.3" E
T. +46 410 36 36 00
F. +46 410 36 36 01
televes.sc@televes.com

UNITED ARAB EMIRATES

Televes Middle East FZE
P.O. Box 17199
Jebel Ali Free Zone Dubai (UAE)
24° 57' 39.7548" N, 55° 3' 48.8232" E
T. +971 4 88 34 344
F. +971 4 88 34 644
televes.me@televes.com

UNITED KINGDOM

Televes United Kingdom Ltd.
Unit 11 Hill Street, Industrial Estate
Cwmbran, Gwent NP44 7PG (UK)
51° 38' 34.8144" N, 3° 1' 23.88" W
T. +44 01 633 875 821
F. +44 01 633 866 311
televes.uk@televes.com

USA

Televes USA LLC.
1385 S Colorado Blvd, Suite A-108
Denver, CO 80222 (USA)
39° 69' 1527" N, 104° 94' 1206" W
T. +1 303 256 6767
televes.usa@televes.com

CHINA

Televes Trade (Shanghai) Co., Ltd.
Unit 207-208, Building A, No 374
Wukang Rd, Xuhui District Shanghai
P.R.C. 200031 (CHINA)
31° 12' 23.5692" N, 121° 26' 21.9804" E
T. +86 21 6126 7620
F. +86 21 6466 6431
shanghai@televes.com.cn



New

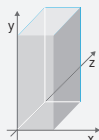


Pack



TForce Technology

Dimensions: xyz
(width x height x depth)



Integrated protection against LTE:

LTE790 Channel 60 filtering (790MHz)

LTE700 Channel 48 filtering (694MHz)

AUTO LTE Channel 48/60 filtering
(automatic switching)



Colour in product

O Orange

W White

R Red

Rb Red-brick

G Grey

Gr Graphite

B Black

V Violet

Packaging type for coaxial cable

O Plastic reel

C Cardboard reel

W Wooden drum

P Plastified coil

Ref.	Description	
FIBREDATA SOLUTIONS: GPON (Gigabit-capable Passive Optical Networks)		
GPON HEADENDS		
769401	OLT512: 8x PON + 4x Gb Ethernet + 4x 10GbEthernet/Gb Ethernet (Up to 512 users) ⁽¹⁾	1
769420	Modular OLT3072, for 3 16xPON cards and 2 2x10Gb switch cards, (Up to 3072 users) ⁽¹⁾	1
769421	2x10Gb Switch Card (for OLT3072, Ref. 769420)	1
769422	16xPON Card (for OLT3072, Ref. 769420)	1
769601	Double Power Supply Unit -48Vdc. 19" Rack Mount, 1RU (for OLT)	1
769410	SFP GPON B+ 1 Fiber "SC/PC"	1
769413	SFP GPON C+ 1 Fiber "SC/PC"	1
769411	SFP Gb Ethernet "RJ45"	1
769412	SFP 10Gb Ethernet 2 Fibers	1
★ 769211	Ethernet - SFP Adapter GPON 1 Fibres, Point to Multipoint (Media Converter)	1
★ 994401	PSU 48V 1,87A (OLT - GPON)	1
MONITORING		
★ 769130	Server + Monitoring Software Tool	1
★ 769131	Monitoring Software Tool	1
★ 769132	Server Lite + Monitoring Software Tool	1
VIDEO OVERLAY HEADENDS		
234305	T.OX Optical Transmitter SMATV 1550nm "SC/APC" Po 5dBm w/o Return Path	1
234811	T.OX Optical Transmitter CATV 1550nm "SC/APC" Po 10dBm w/o Return Path RF Automatic Adjustment and Temperature Stability	1
234806	T.OX Optical Transmitter CATV 1550nm "SC/APC" Po 6dBm w/o Return Path External modulation and RF Automatic Adjustment (up to 30Km). DOCSIS 3.1 compatible	1
769801	Optical Transmitter SMATV 1550nm "SC/APC" Po 5dBm w/o Return Path 19" Rack Mount, 1RU	1
769812	Optical Transmitter CATV 1550nm "SC/APC" Po 6dBm w/o Return Path External modulation and RF Automatic Adjustment (up to 30Km). DOCSIS 3.1 compatible 19" Rack Mount, 1RU	1
769610	Optical Amplifier / Multiplexer "SC/APC" 20dBm (YEDFA Technology) 9i: 8x1310/1490nm - 1x1550nm, 8o: 8x1310/1490/1550nm + Double Power Supply Unit -48Vdc. 19" Rack Mount, 1RU (for OLT)	1
769612	Optical Amplifier / Multiplexer "SC/APC" 17dBm (YEDFA Technology) 9i: 8x1310/1490nm - 1x1550nm, 8o: 8x1310/1490/1550nm + Double Power Supply Unit -48Vdc. 19" Rack Mount, 1RU (for OLT)	1
769611	Optical Amplifier / Multiplexer "SC/APC" 20dBm (YEDFA Technology) 33i: 32x1310/1490nm - 1x1550nm, 32o: 32x1310/1490/1550nm 19" Rack Mount, 2RU	1
234220	T.OX Optical Amplifier 1i/1o: 1550nm "SC/APC" 20dBm (EDFA Technology)	1
234221	T.OX Optical Amplifier / Multiplexer "SC/APC" 19dBm (EDFA Technology) 2i: 1310/1490nm - 1550nm, 1o: 1310/1490/1550nm	1
234228	T.OX Optical Amplifier / Multiplexer "SC/APC" 20dBm (YEDFA Technology) 9i: 8x1310/1490nm - 1x1550nm, 8o: 8x1310/1490/1550nm	1
5629	T.OX Switch-mode Power Supply Unit 120W 24V-5A	1
563901	T.OX Switch-mode Power Supply Unit 120W 24V-5A (110Vac & UL Listed)	1
2337	T.OX Optical Splitter 1260...1650nm "SC/APC" 2W 4dB	1
2339	T.OX Optical Splitter 1260...1650nm "SC/APC" 4W 7dB	1
234401	T.OX Optical Splitter 1260...1650nm "SC/APC" 8W 10dB	1
234501	T.OX Optical Splitter 1260...1650nm "SC/APC" 16W 14dB	1
234601	T.OX Optical Splitter 1260...1650nm "SC/APC" 32W 17dB	1



▲ 769130



▲ 769410



▲ 769413

FIBREDATA SOLUTIONS

TELEVES COST-EFFECTIVE
QUAD PLAY SOLUTIONS OVER
OPTICAL FIBER



▶ OLT3072



▶ OLT512

Compact, reliable, affordable and easy to manage GPON and RF overlay products.

Multiple-play service enabling high speed data, VoIP, 802.11Ac Wi-Fi, video (IPTV and RF overlay) PoE, etc.



▲ 769612



▲ 769812



▲ 769611



▶ MORE INFORMATION ON
OUR FIBREDATA BROCHURE:
en.televes.com/fibredata

(1) AC/DC Adapter included.

Ref.	Description	
FIBREDATA SOLUTIONS: GPON (Gigabit-capable Passive Optical Networks)		
DISTRIBUTION		
234740	WDM Module Optical Multiplexer/Demultiplexer 1i/2o "SC/APC": GPON+RF: Data (1310/1490nm) - TV (1550nm)	1
233750	Optical Splitter, PLC Component, 1260...1650nm "SC/APC" 2W 4dB	1
233950	Optical Splitter, PLC Component, 1260...1650nm "SC/APC" 4W 7dB	1
234450	Optical Splitter, PLC Component, 1260...1650nm "SC/APC" 8W 10dB	1
234550	Optical Splitter, PLC Component, 1260...1650nm "SC/APC" 16W 14dB	1
234650	Optical Splitter, PLC Component, 1260...1650nm "SC/APC" 32W 17dB	1
233850	Optical Splitter, PLC Component, 1260...1650nm "SC/APC" 64W 20dB	1
231502	F.O. Patch/Splitting Box 2 to 4 Outs	1
232622	F.O. Patch Cord Single-mode LSFH Pre-terminated "SC/APC"-"SC/PC" 0.2m	5
232621	F.O. Patch Cord Single-mode LSFH Pre-terminated "SC/APC" 2m (Bag B4)	10
★ 232623	F.O. Patch Cord Single-mode LSFH Pre-terminated "SC/APC" 0.5m (Bag B4)	10
★ 232624	F.O. Patch Cord Single-mode LSFH Pre-terminated "SC/APC"-"FC/UPC" 2m (Bag B4)	10
236410	Optical Attenuator 1310/1550nm "SC/APC" 2dB	1
236411	Optical Attenuator 1310/1550nm "SC/APC" 5dB	1
236412	Optical Attenuator 1310/1550nm "SC/APC" 10dB	1
CUSTOMER PREMISE EQUIPMENT: ONT (Optical Network Terminal)		
769507	ONU Basic Module: 1x GB Ethernet	1
769501	Office ONT Module: 4x GB Ethernet + 2x FXS + 2x USB, WLAN b/g/n	1
769502	Home ONT Module: 4x GB Ethernet + 2x FXS + 2x USB, WLAN b/g/n, RF Overlay	1
★ 769514	Home ONT Module: 4x GB Ethernet + 2x FXS + 2x USB, WLAN b/g/n/ac, RF Overlay	1
★ 769509	Home ONT Module: 4x GB Ethernet/PoE + 2x FXS + RF Overlay	1
★ 769510	Wall/Ceiling mount for ONT Ref. 769514	1
OPTICAL MICRO-NODES		
231111	Domestic Optical Receiver 1550nm "SC/APC" with Amplifier 47...1006MHz, OLC Technology (Optical Level Control)	1



▲ 234740



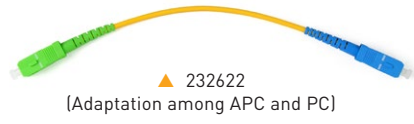
▲ 234650



▲ ONT



▲ 231111



▲ 232622
(Adaptation among APC and PC)

Technical Characteristics: ONT+ONU

References	769501	769502	769514	769509	769507
Models	OFFICE	HOME		ROOM	BASIC
RF Overlay	✗	✓	✓	✓	✗
WiFi (802.11 b/g/n) (2x2) 2.4	✓	✓	✓ ⁽¹⁾	✗	✗
WiFi (802.11 b/g/n/ac) (2x2) 2.4/5	✗	✗	✓ ⁽²⁾	✗	✗
USB	2	2	1	2	✗
FXS Ports	2	2	2	2	✗
ETH 10/100/1000BASE-T Ports	4	4	4	4	1
PoE	✗	✗	✗	4	✗
NAT/NAPT	✓	✓	✓	✓	✗
Firewall	✓	✓	✓	✓	✗
VPN pass-through	✓	✓	✓	✓	✗
PPPoE Terminal	✓	✓	✓	✓	✗
OMCI	✓	✓	✓	✓	✗
TR-069	✓	✓	✓	✓	✗
CLI	✓	✓	✓	✓	✗
WebGUI	✓	✓	✓	✓	✗

The Ref.769514 includes: ⁽¹⁾ WiFi (802.11 b/g/n) (3x3) 2.4 ⁽²⁾ WiFi (802.11 n/ac/a) (4x4) 5

DATA TECHNOLOGY

Ref.	Description	
WAVEDATA		
★ 769001	Wireless Access Point WaveData: 1x Ethernet WAN (PoE), 1x Ethernet LAN, 1x USB 3.0, WLAN b/g/n/ac (option Low Power WiFi)	1
★ 769002	Wireless Access Point WaveData: 1x F.O. SFP, 1x Ethernet LAN, 1x USB 3.0, WLAN b/g/n/ac (option Low Power WiFi)	1
★ 769210	Module SFP 1000Base-X 2 Fibres "LC Duplex"	1
★ 769211	Ethernet - SFP Adapter GPON 1 Fibres, Point to Multipoint (Media Converter)	1
★ 769212	Kit: 2 SPF Modules 1000Base-X 1 Fibre, 1310+1490nm	1
COAXDATA		
GIGABIT: 1Gbps		
769301	Transmitter/Receiver Router 1Gbps-HDTV Data over Coaxial, PLC and WiFi (Low Power WiFi option), 3 Ethernet Connectors & 2 "F" Connectors	1
769201	Transmitter/Receiver 1Gbps-HDTV Data over Coaxial and PLC, 2 Ethernet Connectors & 2 "F" Connectors	1
769202	Transmitter/Receiver 1Gbps-HDTV Data over Coaxial and PLC, 1 Ethernet Connector, 1 SFP (Optical Fiber) Connector & 2 "F" Connectors	1
769203	Transmitter/Receiver 1Gbps-HDTV Data over Coaxial, 1 Ethernet Connector & 2 "F" Connectors	1
MANAGEMENT		
769330	CoaxBox Device: Managing and Monitoring for CoaxData Networks	1
ACCESSORIES		
769210	Ethernet - SFP Adapter 1000Base-X 2 Fibers, Point to Point (Media Converter)	1
769220	Diplexer Filter 2i/1o "F": LPF(2...68MHz) - HPF(87...2150MHz)	1/10
640301	Wall Mount	1
NETWORK ELECTRONICS		
ROUTERS		
★ 769110	Network Manager: Router and Firewall, 4x Gb Ethernet	1
★ 769111	Network Manager: Router and Firewall, 6x Gb Ethernet +2SFP	1
★ 769120	Router 12x Gb Ethernet + Configuration of services 19" Rack Mount, 1RU	1
SWITCHES		
★ 769140	Ethernet Switch: 8x Gb Ethernet + 2x SFP + PoE 150W	1
★ 769141	Ethernet Switch: 24x Gb Ethernet + 4x SFP + PoE 400W	1
★ 769142	Ethernet Switch: 24x Gb Ethernet + 4x SFP + 10Gbps	1
★ 769143	Ethernet Switch: 32x Gb Ethernet + 8x SFP + 10Gbps	1



▲ 769110



▲ 769110



▲ 640301



▲ 769201



▲ 769202



▲ 769203

WAVEDATA SERIES



WIRELESS ACCESS POINT

▶ 76900x

WaveData AP provides a high-performance wireless mobility solution for establishments with medium / high density.

It is equipped with the MyNET Wi-Fi technology from Televes, which enables its configuration in low-power mode (Low Power) and provides the most efficient, secure and responsible Internet access possible.

COAXBBOX

COAXBBOX DEVICE



MANAGING AND MONITORING THE WHOLE COAXDATA NETWORK FROM A SINGLE DEVICE

- CoaxBox includes the following applications:
- **AdminService:** for the configuration of the device itself.
 - **AccessControl:** for CoaxData devices configuration.
 - **CoaxProv:** for the provisioning of CoaxData devices equipped with MyNET WiFi (Ref. 769301).

ARANTIA.TV



IPTV AND INTERACTIVE TV

Arantia TV includes all the services needed to respond to its customers' requirements within a simple IPTV platform in all kinds of projects, including hotels, hospitals, operators, companies and residential buildings. Indeed, it provides additional **new tools in order to enhance business operations.**

- **New multi-screen Middleware:**
 - STB Nemesis V2 Middleware, LG and Samsung televisions*.
 - Apps for iOS and Android devices*.
- **Third party systems integration:**
 - Property Management Systems,
 - NO/NC Alarm Systems.
- **Multiple Interactive Services:**
 - Television, Video on Demand, News, Messages, Check Expenses, Information Services...
- **Integration with Arantia DS (Digital Signage) and Arantia Cast (content sharing on the TV from mobile devices via Chromecast).**
- **A powerful system management tool:** Allows managing all the existing functionalities and includes a complete and intuitive user friendly interface design tool.
- **Customizable user interface,** according to the requirements of every project and even every room within the same project.

* Check compatible TV models.

Ref.	Description	
COMPACT HE-21 IPTV HEADEND		
831010	HE-21 4U Chassis	1
831011	HE-21 4U Chassis with Redundant Power Supply	1
831012	HE-21 1U Chassis	1
831110	HE-21 DVB-S/S2 Input DUAL	1
831114	HE-21 DVB-T/T2 Input QUAD	1
831115	HE-21 DVB-T/T2 Input DUAL	1
831118	HE-21 DVB-IP Input	1
831119	HE-21 Corporate Channel License	1
831111	HE-21 DVB-S/S2 Input QUAD	1
831122	HE-21 HDMI Input QUAD	1
831121	HE-21 ATSC Quad Input	1
831124	HE-21 SDI Quad Input	1
831123	HE-21 DVB-S/S2/T/T2/C/ISDB-T Dual Input with Dual CI	1
MODULAR HEADEND IPH2011		
831202	4RU Chassis with Dual Power	1
831203	Chassis Switch + 2xIPout	1
831205	3 ASI Input SC/3ASI Module	1
831207	4 DVB-S2 Input Module	1
831209	4 COFDM Input Module	1
831210	4 QAM Input Module	1
831211	Dual Descrambler with CI Module	1
TRANSCODER		
832201	Transcoder/Streamer Live	1
★ 832204	Transcoder/Streamer Live Plus	1



▲ Transcoder/Streamer Live

IPTV HE-21 HEADEND



Arantia IPTV HE-21 headend allows the reception of digital services through its DVB-T/T2, DVB-S/S2, DVB-C, ISDB-T, ATSC, HDMI, SDI & IP input modules that are encapsulated in IP packages and streamed through an IPTV network.

- **Cost-effective:** Adjusted price taking into account all the features that incorporates, such as the Session Announcement Protocol (SAP) or Universal Plug and Play (UPnP).
- **High Density:** Many inputs and software options in a reduced space of 4U.
- **Multi-Standard:** Support for most of the European and American Digital TV (DTV) standards.
- **Web Administration.**
- **Descrambling** with DVB-CI.
- **HEVC & 4K** compatible.
- **Optional Products:** Corporate Channel Licence, Interactive Services Middleware and Middleware IPTV Lite.



▲ 832204

Ref.	Description	
INTERACTIVE TELEVISION HEADEND (ITV)		
★ 83032503	Arantia TV Middleware Lite up to 100 Users	1
★ 83031801	Arantia TV Middleware up to 50 Users	1
83032003	Arantia TV Middleware up to 100 Users	1
83032103	Arantia TV Middleware from 101 to 499 Users	1
83032203	Arantia TV Middleware from 500 to 750 Users	1
83032303	Arantia TV Middleware from 751 to 1000 Users	1
83032004	Arantia TV Middleware Marriott up to 100 Users	1
83032104	Arantia TV Middleware Marriott from 101 to 499 Users	1
83032204	Arantia TV Middleware Marriott from 500 to 750 Users	1
83032304	Arantia TV Middleware Marriott over 750 Users	1
83032402	Arantia TV Backup Middleware Marriott with DVB-S/S2 Quad Input	1
830319	Arantia TV Set-Top Box License	1
83050701	Arantia TV LG Compatible Televisions License	1
83050702	Arantia TV Samsung Compatible Televisions License	1
830103	Alarm Monitor Device	1
830506	TV NO/NC Alarm System Integration	1
IPTV - ITV PERSONALIZATION & OPTIONS		
830501	TV Property Management System (PMS) Interface	1
★ 830103	Alarm Monitor Device	1
★ 830506	TV NO/NC Alarm System Integration	1
★ 830508	Property Management System Interface - Char system	1
★ 830509	Property Management System Interface - Char License for Room	1
IPTV - ITV IN ROOM EQUIPMENT		
830108	Nemesis V2 Set-Top Box	1
830216	Universal RF Remote Control	1
830218	Power Supply Unit for Nemesis V2 Set-Top Box (EU, US, UK plug)	1
830219	Nemesis V2 Set-Top Box TVI Extension - Samsung	1
830220	Nemesis V2 Set-Top Box TVI Extension - LG	1
830207	LG/Samsung Remote Control	1
IPTV - ITV ACCESSORIES		
831304	19" Rack 22U (Mounted & Adjusted)	1
831301	19" Rack 27U (Mounted & Adjusted)	1
831302	19" Rack 37U (Mounted & Adjusted)	1
831303	19" Rack 42U (Mounted & Adjusted)	1
831311	Rack Rails for HE-21	1
831402	Layer 2 Ethernet Switch 100TX 24 Ports + 4 SFP Ports	1
831403	Layer 2 Ethernet Switch 100TX 48 Ports + 4 SFP Ports	1
831404	VPN Router	1
831504	CAT6 UTP Cable 1m	1
831701	Uninterruptible Power Supply (UPS)	1
831401	Layer 3 Ethernet Switch 1000TX 24 Ports + 4 SFP Ports	1
831406	Layer 2+ Ethernet Switch 1000TX 24 Ports + 4 SFP Ports	1
831503	Transceiver 1000SX SFP LC MMF (Multi-Mode Fiber)	1
831506	Transceiver 1000LX SFP LC SMF (Single-Mode Fiber)	1
★ 831426	Layer 2+ Ethernet Switch 1000TX 24 Ports + 4 Ports SFP, up to 80 viewing points	1
831505	Transceiver 1000T SFP RJ-45	1

STB NEMESIS V2



Powerful Set-Top-Box designed to deploy interactive services specifically designed and developed to serve the hospitality environment.

Based on the AOSP (Android Open Source Project) with a complete management tool and an intuitive user application, it is the perfect choice to offer information and entertainment services.

- MPEG2, MPEG4-AVC / H264 and H265 decoding capabilities.
- Resolutions up to 4K UHD.
- Connectivity: Gigabit Ethernet, WiFi 2.4 GHz and 5GHz and Bluetooth 4.1.
- Remote management and monitoring.
- Accessories: Power supply 10W (5V/2A) and remote control (Bluetooth and IR)



▲ Rack 27U (Mounted and adjusted)



▲ 83032503



▲ 831403

PROCESSING HEADENDS

TERRESTRIAL AND SATELLITE IP STREAMERS

Streamer generating an IP encapsulated output from the multiplexing of the services available in up to 3 different TV SAT transponders (DVB-S/S2 module) or 4 different TV DTT MUX (DVB-T/T2 module).

For the SAT input module, these transponders may be extracted from 2 different satellites (2 independent SAT inputs), or from a single satellite, using the headend's input loop.

The encrypted satellite channels are transformed into free IP services through the CI interface and the appropriate CAM module. Depending on the CAM type used (standard/professional), one or several services may be opened for free visualization. In addition, the module has the option to re-encrypt the IP services decrypted by the CAM with a DRM Pro:Idiom solution (Digital Rights Management), for secure delivery of contents.

The system will encompass a power supply and some streamer modules depending on the number of services to be distributed.

Ref.	Description	
T.OX STREAMERS IP		
DVB-T/T2-IP		
★ 565701	T.OX Streamer DVB-T/T2-IP CI (Multicast/Unicast, SPTS) Multiplexer: 4 Channels (DVB-T/T2) : 32 IP Streams (1)	1
★ 565740	T.OX Streamer DVB-T/T2-IP CI (Multicast/Unicast, SPTS) Multiplexer: 4 Channels (DVB-T/T2) : 32 IP Streams Pro:Idiom re-encryption for DRM solution (1)	1
DVB-S/S2-IP		
★ 565801	T.OX Streamer DVBS/S2-IP CI (Multicast/Unicast, SPTS) Multiplexer: 3 Transponders(2Sat) or 3 Transponders(1Sat+LoopThru) : 32 IP Streams (1)	1
★ 565840	T.OX Streamer DVBS/S2-IP CI (Multicast/Unicast, SPTS) Multiplexer: 3 Transponders(2Sat) or 3 Transponders(1Sat+LoopThru) : 32 IP Streams Pro:Idiom re-encryption for DRM solution (1)	1
POWER SUPPLY UNITS		
562802	Power Supply Unit 38.4W 24V-1.6A (T.OX standalone mounting)	1
562910	T.OX Switch-mode Power Supply Unit 60W 24V-2.5A	1
5629	T.OX Switch-mode Power Supply Unit 120W 24V-5A	1
563901	T.OX Switch-mode Power Supply Unit 120W 24V-5A (110Vac & UL Listed)	1
SUPPORTS & ENCLOSURES		
567401	Standalone Support (1 T.OX Module)	1
5071	Wall Mount 498mm (1 PSU + 7 T.OX Modules or 10 T12/T05 Modules) ⁽²⁾	1
5239	Wall Mount 560mm (1 PSU + 8 T.OX Modules or 12 T12/T05 Modules) ⁽²⁾	1
5301	19" Rack Frame 484mm 5RU (1 PSU + 7 T.OX Modules or 10 T12/T05 Modules) ⁽²⁾	1
507203	Lockable Cabinet with Forced Ventilation 498mm (1 PSU + 7 T.OX Modules) ⁽²⁾	1
5333	19" Rack Cabinet 15RU. Ventilation, Wheels, Glazed Door	1
507204	Lockable Cabinet with Forced Ventilation 327mm (1 PSU + 4 T.OX Modules)	1
ACCESSORIES		
★ 216802	Kit: OTG USB - microUSB B Cable & WiFi Adapter. Utilities: Streamers T.OX WiFi Control	1
5673	T.OX Blank Plate 50mm - 5RU	1
533153	T.OX Panel for Rack 19" 1RU, Up to 2x7 "F" connectors	1
4061	Terminal Load "F" 750hm with DC Blocked	10/200
4071	DC Blocker "F"	10
4947	Coaxial Atmospheric Surge Arrestor 90V 0...3GHz	1/20



▲ 565701



▲ 565801



▲ 216802

(1) In case of modules with CI, it is the responsibility of the concerned person to consult Teledes and check compatibility of CAM and card with the module.

(2) The number of modules indicated is based solely on the available space; but the number of installable modules may be limited by other restrictions as consumption or temperature.

PROCESSING HEADENDS

Highlights:

- 32 IP streams SPTS (FTA services)
- DiSEqC 1.0 for multiswitches control
- Service decryption by insertion of a PCMCIA module
- Internal switch for IP out Daisy chain of several modules
- Option of DRM (Pro:Idiom) encryption (up to 8 reencrypted services) of the output IP streaming
- Embedded user web interface for module configuration: RF parameters, services, monitoring, etc.
- Web control from any wireless device with the WiFi network interface (using the accessory ref. 216802).

Main features:

- Selection of services among the 3 input transponders (Satellite) or among 4 MUX (Terrestrial) to distribute in streaming
- Provides flow information of each service to estimate the global output flow of the module
- Device monitoring and signal status LEDs.
- Headend control (several modules) from a single web interface.

WEB CONTROL

Web control from any wireless device with the WiFi network interface (using the accessory ref. 216802)



WEB INTERFACE

The screenshots show the following interface elements:

- INPUTS CONFIGURATION:** Shows three input channels with their respective frequencies and status indicators (e.g., 172.28.1.54, 172.26.255.3, 172.26.255.0).
- Channel Table:** A table listing channels with details like Channel, Bandwidth, and PLP.
- IP Outputs:** A table listing configured IP outputs with columns for Order, IP, Port, Status, Service, and Actions.
- OUTPUTS CONFIGURATION:** Shows the configuration for a specific output stream.
- New IP Output:** A modal window for adding a new output, showing a list of services to select from.

Order	IP	Port	Status	Service	Actions
1	225.0.0.22	2001	ON	S3 3sat HD (TS B)	[Edit] [Delete]
2	225.0.0.23	2001	ON	S3 Deutschland Vorratherie (TS C)	[Edit] [Delete]
3	225.0.0.24	2001	ON	S3 KIKA HD (TS B)	[Edit] [Delete]
4	225.0.0.25	2001	ON	S3 QVC UHD (TS C)	[Edit] [Delete]
5	225.0.0.26	2001	ON	S3 HD News 24 (TS B)	[Edit] [Delete]
6					
7					
8					

TS	ID	Service Name	Bitrate
<input type="checkbox"/>	A	38652	3.5 Mbps
<input checked="" type="checkbox"/>	A	38654	3.7 Mbps
<input checked="" type="checkbox"/>	A	38655	4.4 Mbps
<input checked="" type="checkbox"/>	A	38656	3.4 Mbps
<input type="checkbox"/>	A	38657	3.3 Mbps
<input type="checkbox"/>	A	38658	4.4 Mbps
<input type="checkbox"/>	A	38659	3.4 Mbps
<input type="checkbox"/>	A	38660	3.5 Mbps
<input type="checkbox"/>	A	38662	4.0 Mbps
<input type="checkbox"/>	A	38665	3.3 Mbps
<input type="checkbox"/>	A	38666	0.0 Mbps
<input type="checkbox"/>	A	38667	0.1 Mbps



TWO MODULES IN ONE

CONTENT IP STREAMER OR IP/AV TO RF MODULATOR



T.OX ENCODER TWIN IP REF.563852

- Two operating modes: AV - IP/RF or IP/ AV - RF
- High output signal power without additional amplification
- DVB-T and DVB-C output or configurable IP
- Energy efficient due to its low power consumption



HDTV



REMOTE
MANAGEMENT



LOW
CONSUMPTION



H.264
STANDARD

Ref.	Description	
T.OX SERIES		
SMATV HEADENDS		
563101	T.OX Transmodulator DVBS/S2-COFDM (47...862MHz)	1
563301	T.OX Transmodulator DVBS/S2-COFDM CI (47...862MHz) ⁽¹⁾	1
564201	T.OX Transmodulator DVBS/S2-COFDM CI (47...862MHz) Multiplexer: 3 Transponders(2Sat) :1Ch or 3 Transponders(1Sat+LoopThru): 1Ch ⁽¹⁾	1
564260	T.OX Transmodulator DVBS/S2-ISDBTb CI (47...862MHz) Multiplexer: 3 Transponders(2Sat) :1Ch or 3 Transponders(1Sat+LoopThru) :1Ch ⁽¹⁾	1
564301	T.OX Twin Transmodulator DVBS/S2-COFDM CI (47...862MHz) Multiplexer: 3 Transponders(2Sat) :2Ch or 3 Transponders(1Sat+LoopThru): 2Ch ⁽¹⁾	1
563001	T.OX Twin Transmodulator DVBS/S2-QAM (47...862MHz)	1
564501	T.OX Hexa Transmodulator DVBS/S2-QAM (47...862MHz)	1
563501	T.OX Transmodulator DVBS/S2-QAM CI (47...862MHz) ⁽¹⁾	1
564101	T.OX Transmodulator DVBS/S2-QAM CI (47...862MHz) Multiplexer: 3 Transponders(2Sat) :1Ch or 3 Transponders(1Sat+LoopThru):1Ch ⁽¹⁾	1
564401	T.OX Twin Transmodulator DVBS/S2-QAM CI (47...862MHz) Multiplexer: 3 Transponders(2Sat) :2Ch or 3 Transponders(1Sat+LoopThru): 2Ch ⁽¹⁾	1
553701	T.OX Twin Transmodulator QPSK-PAL CI Stereo (VSB 47...862MHz) ⁽¹⁾	1
553702	T.OX Twin Transmodulator QPSK/PAL CI Stereo (VSB 47...862MHz) Pro CAM compatible. Simultaneous decryption of 2 services ⁽¹⁾⁽²⁾	1
★ 564130	T.OX Transmodulator DVBS/S2-QAM CI Re-encryption (47...862MHz) Multiplexer: 3 Transponders(2Sat): 1 Ch or 3 Transponders (1Sat+LoopThru): 1 Ch	1
★ 564230	T.OX Transmodulator DVBS/S2-COFDM CI Re-encryption (47...862MHz) Multiplexer: 3 Transponders(2Sat): 1 Ch or 3 Transponders (1Sat+LoopThru): 1 Ch	1
MATV HEADENDS		
566001	T.OX Encoder/Modulator Single 1i: HDMI / Component(YPbPr) / CVBS - 1Mux: COFDM/QAM (MPEG2/4) (Standalone support + PSU 18V included)	1
563822	T.OX Encoder/Modulator Quad, 4i A/V: CVBS - 1Mux: COFDM/QAM (MPEG2/4)	1
563823	T.OX Encoder/Modulator Quad, 4i A/V: CVBS - 1Mux: ISDBTb/COFDM (MPEG2/4)	1
563832	T.OX Encoder/Modulator Twin, 2i: HDMI / Component (YPbPr) - 1Mux: COFDM/QAM (MPEG2/4)	1
563833	T.OX Encoder/Modulator Twin, 2i: HDMI / Component (YPbPr) - 1Mux: ISDB-Tb/DVB-T (MPEG2/4)	1
563852	T.OX Encoder/Modulator IP Twin (MPEG2/4), 2 Modes: 2i: HDMI / Component(YPbPr) / CVBS - 1Mux: IP/COFDM/QAM 2i: HDMI / Component(YPbPr) / CVBS / IP - 1Mux: COFDM/QAM	1
565101	T.OX Twin Transmodulator DVBT/T2-COFDM CI (47...862MHz) Multiplexer: 2 Channels (DVB-T/T2): 2 Channels (DVB-T) ⁽¹⁾	1
565201	T.OX Twin Transmodulator DVBT/T2-QAM CI (47...862MHz) Multiplexer: 2 Channels (DVB-T/T2): 2 Channels (DVB-T) ⁽¹⁾	1
564901	T.OX Twin Processor Analogue/Digital Channel (47...862MHz)	1
5806	T.OX Twin Modulator Analogue A/V-PAL Stereo (VSB 47...862MHz)	1
580610	T.OX Twin Modulator Analogue A/V-PAL Mono (VSB 47...862MHz)	1
POWER SUPPLY UNITS		
562802	Power Supply Unit 38.4W 24V-1.6A (T.OX standalone mounting)	1
562910	T.OX Switch-mode Power Supply Unit 60W 24V-2.5A	1
5629	T.OX Switch-mode Power Supply Unit 120W 24V-5A	1
563901	T.OX Switch-mode Power Supply Unit 120W 24V-5A (110Vac & UL Listed)	1
AMPLIFIER		
5575	T.OX Amplifier Push-Pull 47...862MHz G 44dB Vo 120dBμV	1
COMBINER		
565002	Combiner 7i/1o: 5...1002MHz, 19" Rack Mount, 1RU	1



▲ 564201

▲ 564301



▲ T.OX Encoders

Generate your own DTT content in High Definition.



▲ 565201

▲ 565101



▲ 565002

(1) In case of modules with CI, it is the responsibility of the concerned person to consult Televes and check compatibility of CAM and card with the module.

(2) If CAM and card allow it.

PROCESSING HEADENDS

Ref.	Description	
T.OX SERIES		
REMOTE CONTROL, PROGRAMMER & SW		
5559	T.OX Headend Management Unit CDC IP	1
555911	T.OX Headend Management Control CDC IP/3G	1
7234	Universal Programmer T.OX/T05/AVANT	1
216801	Kit: PC-Module Cable & USB-Serial Adapter Utilities: TSuite (T.OX, T05)	1
SUPPORTS & ENCLOSURES		
567401	Standalone Support (1 T.OX Module)	1
5071	Wall Mount 498mm (1 PSU + 7 T.OX Modules or 10 T12/T05 Modules) ⁽¹⁾	1
5239	Wall Mount 560mm (1 PSU + 8 T.OX Modules or 12 T12/T05 Modules) ⁽¹⁾	1
5301	19" Rack Frame 484mm 5RU (1 PSU + 7 T.OX Modules or 10 T12/T05 Modules) ⁽¹⁾	1
507203	Lockable Cabinet with Forced Ventilation 498mm (1 PSU + 7 T.OX Modules) ⁽¹⁾	1
5333	19" Rack Cabinet 15RU. Ventilation, Wheels, Glazed Door	1
507204	Lockable Cabinet with Forced Ventilation 327mm (1 PSU + 4 T.OX Modules)	1
ACCESSORIES		
5673	T.OX Blank Plate 50mm - 5RU	1
533153	T.OX Panel for Rack 19" 1RU, Up to 2x7 "F" connectors	1
4061	Terminal Load "F" 750hm with DC Blocked	10/200
4071	DC Blocker "F"	10
4947	Coaxial Atmospheric Surge Arrestor 90V 0...3GHz	1/20
WALL MOUNT		
585901	Analogue Modulator Quad PAL B/G with channel display (VHF/UHF) Wall mount (Connection accessories included)	1
MODULATOR + ENCODERS (RACK MOUNT)		
718201	Chassis with Double Power Supply, 6 Slots for slot-in Encoder/Modulator. 19" Rack Mount, 1RU	1
718210	Slot-in Encoder/Modulator IP - COFDM (8Mux)	1
718220	Slot-in Encoder/Modulator IP - QAM (16Mux)	1



▲ Pre-assembled Rack Cabinet (on request)



▲ 585901



▲ 5301



▲ 5071



▲ 567401



▲ 507203 (T.OX units not included)



▲ 507204



▲ 718201

APP TSUITE



TSuite in the Play Store & App Store

The T.OX headends can now be set with mobile apps for iOS and Android. TSuite and its Windows version is now available for these platforms. This makes it possible to set and control the Televés headends via smartphones and tablets. The installer can start maintenance or installation immediately.

(1) The number of modules indicated is based solely on the available space but the number of installable modules may be limited by other restrictions as consumption or temperature.

FIBER OPTICS

Ref.	Description	
T.OX SERIES		
TRANSMISSION & RECEPTION		
233306	T.OX Optical Transmitter SMATV 1310nm "SC/APC" Po 6dBm w/o Return Path	1
233311	T.OX Optical Transmitter SMATV 1310nm "SC/APC" Po 10dBm w/o Return Path	1
234801	T.OX Optical Transmitter CATV 1310nm "SC/APC" Po 10dBm w/o Return Path RF Automatic Adjustment and Temperature Stability	1
234305	T.OX Optical Transmitter SMATV 1550nm "SC/APC" Po 5dBm w/o Return Path	1
234806	T.OX Optical Transmitter CATV 1550nm "SC/APC" Po 6dBm w/o Return Path External modulation and RF Automatic Adjustment (up to 30Km). DOCSIS 3.1 compatible	1
234811	T.OX Optical Transmitter CATV 1550nm "SC/APC" Po 10dBm w/o Return Path RF Automatic Adjustment and Temperature Stability	1
2335	T.OX Optical Receiver SMATV 1200...1600nm "SC/APC" w/o Return Path, 87...2400MHz	1
★ 233501	T.OX Optical Receiver SMATV 1200...1600nm "SC/APC" w/o Return Path, 54...2150MHz	1
2336	T.OX Optical Receiver SMATV 1200...1600nm "SC/APC" with Return Path Optical Transmitter 1310nm Po 3dBm	1
234901	T.OX Return Path Optical Receiver (5...300MHz) 1270...1650nm "SC/APC", with AGC	1
SPLITTERS		
2337	T.OX Optical Splitter 1260...1650nm "SC/APC" 2W 4dB	1
2339	T.OX Optical Splitter 1260...1650nm "SC/APC" 4W 7dB	1
234401	T.OX Optical Splitter 1260...1650nm "SC/APC" 8W 10dB	1
234501	T.OX Optical Splitter 1260...1650nm "SC/APC" 16W 14dB	1
234601	T.OX Optical Splitter 1260...1650nm "SC/APC" 32W 17dB	1
POWER SUPPLY UNITS		
562910	T.OX Switch-mode Power Supply Unit 60W 24V-2.5A	1
5629	T.OX Switch-mode Power Supply Unit 120W 24V-5A	1
563901	T.OX Switch-mode Power Supply Unit 120W 24V-5A (110Vac & UL Listed)	1
AMPLIFIERS		
234220	T.OX Optical Amplifier 1i/1o: 1550nm "SC/APC" 20dBm (EDFA Technology)	1
234221	T.OX Optical Amplifier / Multiplexer "SC/APC" 19dBm (EDFA Technology) 2i: 1310/1490nm - 1550nm, 1o: 1310/1490/1550nm	1
234228	T.OX Optical Amplifier / Multiplexer "SC/APC" 20dBm (YEDFA Technology) 9i: 8x1310/1490nm - 1x1550nm, 8o: 8x1310/1490/1550nm	1
MULTIPLEXER / DEMULTIPLEXER (WDM)		
234701	T.OX Optical Multiplexer / Demultiplexer 1i/2o "SC/APC": GPON+RF: Data (1310/1490nm) - TV (1550nm)	1
234702	T.OX Optical Multiplexer / Demultiplexer 1i/2o "SC/APC": RFoG: Uplink (1610nm) - Downlink (1550nm)	1
SUPPORTS & ENCLOSURES		
5071	Wall Mount 498mm (1 PSU + 7 T.OX Modules or 10 T12/T05 Modules) ⁽¹⁾	1
5239	Wall Mount 560mm (1 PSU + 8 T.OX Modules or 12 T12/T05 Modules) ⁽¹⁾	1
5301	19" Rack Frame 484mm 5RU (1 PSU + 7 T.OX Modules or 10 T12/T05 Modules) ⁽¹⁾	1
507203	Lockable Cabinet with Forced Ventilation 498mm (1 PSU + 7 T.OX Modules) ⁽¹⁾	1
5333	19" Rack Cabinet 15RU. Ventilation, Wheels, Glazed Door	1
507204	Lockable Cabinet with Forced Ventilation 327mm (1 PSU + 4 T.OX Modules)	1
ACCESSORIES		
5673	T.OX Blank Plate 50mm - 5RU	1
4061	Terminal Load "F" 750hm with DC Blocked	10/200
4071	DC Blocker "F"	10
4947	Coaxial Atmospheric Surge Arrestor 90V 0...3GHz	1/20



▲ 234806 ▲ 234801/234811



▲ 234401 ▲ 234501 ▲ 234601



▲ 234221 ▲ 234228



▲ 234701 ▲ 234702

(1) The number of modules indicated is based solely on the available space; but the number of installable modules may be limited by other restrictions as consumption or temperature.

FIBER OPTICS

Ref.	Description	
19" RACK FORMAT		
TRANSMISSION & RECEPTION		
769902	Optical Transmitter SMATV 1310nm "SC/APC" Po 6dBm w/o Return Path, 19" Rack Mount, 1RU	1
769903	Optical Transmitter SMATV 1310nm "SC/APC" Po 10dBm w/o Return Path, 19" Rack Mount, 1RU	1
STANDALONE FORMAT		
TRANSMISSION & RECEPTION		
238201	FiberKom Optical Transmitter SMATV 1310nm "SC/APC" Po 3dBm w/o Return Path	1
F.O. DISTRIBUTION (OPTICAL NODES)		
OPTICAL NODES (OUTDOOR)		
231020	Outdoor Optical Node 1200...1600nm "SC/APC" Return Path 1610nm with Amplifier 2o: 87...1006MHz, OLC Technology (Local Powering) ⁽¹⁾	10
231220	Outdoor Optical Receiver 1200...1600nm "SC/APC" without Return Path with Amplifier 2o: 40...1006MHz, OLC Technology (Local Powering) ⁽¹⁾	1
231201	Outdoor Optical Receiver 1200...1600nm "SC/APC" without Return Path with Amplifier 1o: 87...862/950...2150MHz (Local Powering)	1
★ 231282	Outdoor Optical Receiver 1200...1600nm "SC/APC" without Return Path (1 Fiber) with Amplifier 2o: 54...1006MHz, OLC Technology (Local Powering)(US plug) ⁽¹⁾	1
★ 231080	Outdoor Optical Node 1200...1600nm "SC/APC" Return Path 1310nm (2 Fiber) with Amplifier 2o: 54...1006MHz, OLC Technology (Local Powering)(US plug) ⁽¹⁾	1
OPTICAL MINI-NODES: FIBERKOM SERIES		
238001	FiberKom Optical Mini-node 1200...1600nm "SC/APC" Return Path 1310nm (2 Fibers) with Amplifier 87...1218MHz DOCSIS 3.1 Compatible. OLC Technology (Local Powering) ⁽¹⁾	1
238004	FiberKom Optical Mini-node 1550nm "SC/APC" Return Path 1610nm (1 Fiber) with Amplifier 87...1218MHz DOCSIS 3.1 Compatible. OLC Technology (Remote Powering) ⁽¹⁾	1
238005	FiberKom Optical Mini-node 1550nm "SC/APC" Return Path 1610nm (1 Fiber) with Amplifier 87...1218MHz DOCSIS 3.1 Compatible. OLC Technology (Local Powering) ⁽¹⁾	1
238101	FiberKom Optical Mini-receiver 1200...1600nm "SC/APC" without Return Path (1 Fiber) with Amplifier 47...1006MHz, OLC Technology (Remote Powering) ⁽¹⁾	1
★ 238079	FiberKom Optical Mini-receiver 1200...1600nm "SC/APC" without Return Path (1 Fiber) with Amplifier 47...1006MHz, OLC Technology (Local Powering)	1
OPTICAL MICRO-NODES		
231111	Domestic Optical Receiver 1550nm "SC/APC" with Amplifier 47...1006MHz, OLC Technology ⁽¹⁾	1
231110	Domestic Optical Receiver 1200...1600nm "SC/APC" with Amplifier 47...1006MHz, OLC Technology ⁽¹⁾	1
2311	Domestic Optical Receiver 1200...1600nm "SC/APC" with Amplifier 87...862/950...2400MHz with Automatic Adjustment	1
★ 231190	Domestic Optical Receiver 1550nm "SC/APC" with Amplifier 87...862/950...2400MHz with Automatic Adjustment	1



▲ 769902



▲ 769903



▲ 238201



▲ Mini-Node: FiberKom Series (185 x 80 x 35 mm)



▲ Micro-Node (145 x 60 x 35 mm)



▲ Outdoor Node (232 x 140 x 90 mm)



(1) OLC Technology: Optical Level Control.

FIBER OPTICS

Ref.	Description	
F.O. DISTRIBUTION		
RACKS AND ACCESSORIES		
533106	19" Rack Cabinet 6RU (+2RU extra). Glazed Door and Accesible from the side. Wall/Ground Mount	1
533108	19" Rack Cabinet 8RU (+2RU extra). Glazed Door and Accesible from the side. Wall/Ground Mount	1
533113	19" Rack Cabinet 13RU (+2RU extra). Glazed Door and Accesible from the side. Wall/Ground Mount	1
533117	19" Rack Cabinet 17RU (+2RU extra). Glazed Door and Accesible from the side. Wall/Ground Mount	1
533124	19" Rack Cabinet 24RU (+2RU extra). Glazed Door and Accesible from the side. Ground Mount	1
533150	Panel for Rack 19" 1RU, Up to 24 "F" connectors	1
533153	T.OX Panel for Rack 19" 1RU, Up to 2x7 "F" connectors	1
533151	Panel for Rack 19" 1RU, Up to 24 "RJ45" connectors	1
533154	Cable Management for Rack 19" 1RU, 5 Holes	1
533156	Cable Management for Rack 19" 1RU, 5 Rings	1
533152	Splice Box for Rack 19" 1RU, Up to 24 "SC" connectors (Depth 230mm)	1
★ 533157	Splice Box for Rack 19" 2RU, Up to 48 "SC" connectors (Depth 230mm)	1
533155	Tray for Rack 19" 2RU (Depth 265mm)	1
533161	Blank Panel for Rack 19" 1RU	1
533163	Blank Panel for Rack 19" 3RU	1
533165	Blank Panel for Rack 19" 5RU	1
533170	Screw Kit for Rack 19": Screw with washer and nut (50 units)	1
ENCLOSURES		
233002	Main Terminal Enclosure for F.O., Indoor (Up to 48 "SC/APC" connectors)	1
233003	Stackable Main Enclosure for F.O., Indoor (Up to 48 "SC/APC" connectors)	1
231302	Splitting Terminal Enclosure for F.O., Indoor (Up to 24 fibers)	1
231301	Splitting Terminal Enclosure for F.O., Indoor (Up to 16 fibers)	1
231310	Splitting Terminal Enclosure for F.O., Indoor (Up to 8 fibers)	1
546701	Data/Coaxial/Fiber Network Terminal Enclosure	1
USER ACCESS POINT (UAP)		
231502	F.O. Patch/Splitting Box 2 to 4 Outs ⁽¹⁾	1
231520	F.O. Patch Box 2 to 4 Outs: 2 Pre-terminated Fibers of 15m on one end ^{(1) (2)}	1
231521	F.O. Patch Box 2 to 4 Outs: 2 Pre-terminated Fibers of 25m on one end ^{(1) (2)}	1
231522	F.O. Patch Box 2 to 4 Outs: 2 Pre-terminated Fibers of 40m on one end ^{(1) (2)}	1
231523	F.O. Patch Box 2 to 4 Outs: 2 Pre-terminated Fibers of 55m on one end ^{(1) (2)}	1
231524	F.O. Patch Box 2 to 4 Outs: 2 Pre-terminated Fibers of 70m on one end ^{(1) (2)}	1
231525	F.O. Patch Box 2 to 4 Outs: 2 Pre-terminated Fibers of 85m on one end ^{(1) (2)}	1
231526	F.O. Patch Box 2 to 4 Outs: 2 Pre-terminated Fibers of 100m on one end ^{(1) (2)}	1
231530	F.O. Patch Box 4 Outs: 4 Pre-terminated Fibers of 15m on one end ^{(1) (2)}	1
231531	F.O. Patch Box 4 Outs: 4 Pre-terminated Fibers of 25m on one end ^{(1) (2)}	1
231532	F.O. Patch Box 4 Outs: 4 Pre-terminated Fibers of 40m on one end ^{(1) (2)}	1
231533	F.O. Patch Box 4 Outs: 4 Pre-terminated Fibers of 55m on one end ^{(1) (2)}	1
231534	F.O. Patch Box 4 Outs: 4 Pre-terminated Fibers of 70m on one end ^{(1) (2)}	1
231535	F.O. Patch Box 4 Outs: 4 Pre-terminated Fibers of 85m on one end ^{(1) (2)}	1
231536	F.O. Patch Box 4 Outs: 4 Pre-terminated Fibers of 100m on one end ^{(1) (2)}	1



▲ 533113
(600 x 690 x 400mm)



▲ 533152
(480 x 43 x 230mm)



▲ 533157



▲ 233003
(444 x 180 x 125 mm)



▲ 233002 (454 x 358 x 95 mm) ▲ 231302 (206 x 300 x 110 mm)



▲ 231301
(153 x 264 x 67 mm)



▲ 231310
(203 x 106 x 30 mm)

Types of Rack Cabinets

Ref.	Dimensions (mm)
533106	600 x 380 x 400
533108	600 x 460 x 400
533113	600 x 690 x 400
533117	600 x 870 x 400
533124	600 x 1200 x 600



▲ 23152x / 23153x

(1) "SC/APC" (Female - Female) Adapters and dispenser box included.

(2) ITU-T G657A2 single-mode fibers.

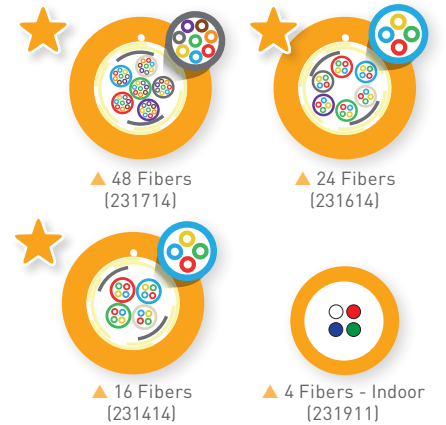
FIBER OPTICS

Ref.	Description		
F.O. CABLES (ITU-T G657A2)			
MULTI-FIBER CABLES (FIBER'S LOOSE BUFFER Ø 250µm)			
★ 231414	Multi-fiber Cable 16 Single-mode Fibers LSFH Dca		By m
★ 231614	Multi-fiber Cable 24 Single-mode Fibers LSFH Dca		By m
★ 231714	Multi-fiber Cable 24 Single-mode Fibers LSFH Dca		By m
MULTI-FIBER CABLES (FIBER'S TIGHT BUFFER Ø 900µm)			
231802	Multi-fiber Cable 12 Single-mode Fibers LSFH	○	By m
231603	Multi-fiber Cable 24 Single-mode Fibers LSFH	○	By m
231702	Multi-fiber Cable 48 Single-mode Fibers LSFH	○	By m
4 FIBER CABLES (FIBER'S LOOSE BUFFER Ø 250µm)			
231911	4 Fiber Cable Single-mode Indoor LSFH	○	300
2 FIBER CABLES (FIBER'S TIGHT BUFFER Ø 900µm)			
231901	2 Fiber Cable Single-mode Indoor LSFH Dca	○	300
231902	2 Fiber Cable Single-mode Indoor LSFH Dca	○	750
232001	2 Fiber Cable Single-mode Outdoor LSFH Dca	●	200
232002	2 Fiber Cable Single-mode Outdoor LSFH Dca	●	500
PRE-TERMINATED PATCH CORDS (Ø 3mm)			
232622	F.O. Patch Cord Single-mode LSFH Pre-terminated "SC/APC" - "SC/PC" 0.2m (OLT GPON)		5
232621	F.O. Patch Cord Single-mode LSFH Pre-terminated "SC/APC" 2m (Bag B4)		10
★ 232623	F.O. Patch Cord Single-mode LSFH Pre-terminated "SC/APC" 0.5m (Bag B4)		10
★ 232624	F.O. Patch Cord Single-mode LSFH Pre-terminated "SC/APC" - "FC/UPC" 2m (Bag B4)		10
232640	F.O. Duplex Patch Cord Single-mode LSFH Pre-terminated "SC/APC" 10m		1
232641	F.O. Duplex Patch Cord Single-mode LSFH Pre-terminated "SC/APC" 15m		1
232642	F.O. Duplex Patch Cord Single-mode LSFH Pre-terminated "SC/APC" 20m		1
232643	F.O. Duplex Patch Cord Single-mode LSFH Pre-terminated "SC/APC" 25m		1
232644	F.O. Duplex Patch Cord Single-mode LSFH Pre-terminated "SC/APC" 30m		1
232645	F.O. Duplex Patch Cord Single-mode LSFH Pre-terminated "SC/APC" 40m		1
ACCESSORIES			
2327	Splicing Protection Sleeve 60mm for FO fusion		200
232701	Splicing Protection Sleeve 43mm for FO fusion		200
2328	Fiber Mechanical Splices		10
2329	Connectors of Fiber Optics "SC/APC" (with mounting tool)		10
232602	F.O. Patch Cord Single-mode LSFH Pre-terminated "SC/APC" 2m (ITU-T G657A2, 900µm) Convertible to Pigtail		25
233203	Adapter "SC/APC" Female - "SC/APC" Female, with Auto-blocking Cap		25
233210	Twin Adapter "SC/APC" Female - "SC/APC" Female, with Auto-blocking Cap		20/1000
212001	Coaxial Cable / Optical Fiber Dispenser, Small model (plastic drums) ⁽¹⁾		1
212011	Coaxial Cable / Optical Fiber Dispenser, Large model (plastic drums) ⁽²⁾		1

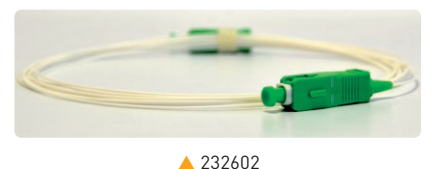
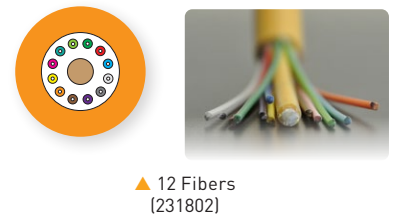
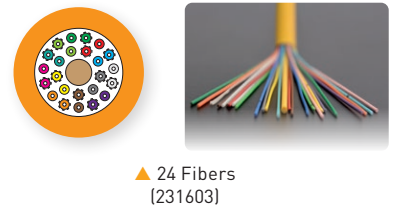
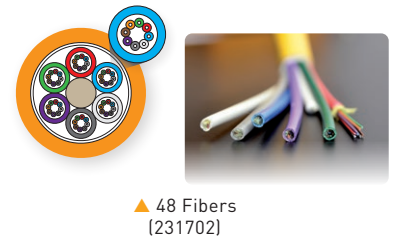
"By m" = Cut to length

F.O. CABLES

Fiber's loose buffer Ø 250µm



Fiber's tight buffer Ø 900µm



(1) For 2 fiber cable in 200 or 300m drum.
 (2) For 2 fiber cable in 500 or 750m drum.



Ref.	Description		
F.O. DISTRIBUTION (OPTICAL LNB)			
OPTICAL LNBs			
2353	Offset Optical LNB 1310nm "FC/PC" G 72dB Po 7dBm (Up to 32 converters), Grey	G	1
2363	P.F. Optical LNB 1310nm "FC/PC" G 72dB Po 7dBm Grey	G	1
OPTICAL FIBER / RF CONVERTERS: SATELLITE + TERRESTRIAL			
236801	RF/Optical Converter ODU32 1310nm "F"- "N"- "FC/PC": DAB/UHF-SAT + Offset LNB + AC/DC Adapter + Interconnection Accessories		1
236810	RF/Optical Converter ODU32 1550nm "F"- "N"- "FC/PC": DAB/UHF-SAT + Offset LNB + AC/DC Adapter + Interconnection Accessories		1
236903	Optical/RF Converter "FC/PC"- "F" Quad FM/DAB/UHF-SAT		1
237003	Optical/RF Converter "FC/PC"- "F" Quattro FM/DAB/UHF-SAT		1
FTTH TRANSMISSION & RECEPTION			
237301	Optical Transmitter / Multiplexer "SC/APC". 2i: 1310/1490nm(Sat) - RF(Terr.), 1o: 1310/1490/1550nm(Sat/Terr.)		1
237311	Optical Receiver / Demultiplexer "SC/APC". 1i: 1310/1490/1550nm(Sat/Terr.), 2o: 1310/1490nm(Sat) - RF(Terr.)		1
FIBER4SAT SOLUTION: 2/4 SATELLITES + TERRESTRIAL			
237901	Optical Transmitter / Multiplexer DWDM "SC/APC" 5i: 4x 1100...1600nm(Sat) - RF(Terr.), 1o: 1550nm(4xSat+Terr), Po 5dBm		1
★ 237910	Optical Transmitter / Multiplexer DWDM "SC/APC" 3i: 2x 1100...1650nm(Sat) - RF(Terr.), 1o: 1550nm(2xSat+Terr), 9dBm		10
234755	DWDM Component, Optical Multiplexer / Demultiplexer 1i/4o "FC/PC": 1550,12nm (Ch34) / 1150,92nm (Ch33) / 1551,72nm (Ch32) / 1552,52nm (Ch31)		1
237902	Optical Transmitter / Multiplexer CWDM "SC/APC" 5i: 4x 1100...1600nm(Sat) - RF(Terr.), 1o: 1550nm(4xSat+Terr), Po 5dBm		1
★ 237920	Optical Transmitter / Multiplexer CWDM "SC/APC" 3i: 2x 1100...1650nm(Sat) - RF(Terr.), 1o: 1550nm(2xSat+Terr), Po 6dBm		1
234756	CWDM Component, Optical Multiplexer / Demultiplexer 1i/4o "FC/PC": 1510/1530/1550/1570nm		1
SPLITTERS			
235701	Optical Splitter 1310/1550nm "FC/PC" 2W 4dB		1
235801	Optical Splitter 1310/1550nm "FC/PC" 3W 5.5dB		1
235901	Optical Splitter 1310/1550nm "FC/PC" 4W 7dB		1
236001	Optical Splitter 1310/1550nm "FC/PC" 8W 10.1dB		1
ATTENUATORS			
2364	Optical Attenuator 1310/1550nm "FC/PC" 5dB		1
2365	Optical Attenuator 1310/1550nm "FC/PC" 10dB		1
2366	Optical Attenuator 1310/1550nm "FC/PC" 15dB		1
PRE-TERMINATED PATCH CORDS			
236110	F.O. Patch Cord Single-mode LSFH Pre-terminated "FC/PC" 1m		1
2361	F.O. Patch Cord Single-mode LSFH Pre-terminated "FC/PC" 3m		1
236101	F.O. Patch Cord Single-mode LSFH Pre-terminated "FC/PC" 5m		1
236102	F.O. Patch Cord Single-mode LSFH Pre-terminated "FC/PC" 10m		1
236103	F.O. Patch Cord Single-mode LSFH Pre-terminated "FC/PC" 20m		1
236104	F.O. Patch Cord Single-mode LSFH Pre-terminated "FC/PC" 30m		1
236105	F.O. Patch Cord Single-mode LSFH Pre-terminated "FC/PC" 40m		1
236106	F.O. Patch Cord Single-mode LSFH Pre-terminated "FC/PC" 50m		1
236107	F.O. Patch Cord Single-mode LSFH Pre-terminated "FC/PC" 75m		1
236108	F.O. Patch Cord Single-mode LSFH Pre-terminated "FC/PC" 100m		1
236109	F.O. Patch Cord Single-mode LSFH Pre-terminated "FC/PC" 200m		1
ACCESSORIES			
237050	Power Supply Unit 20V-1.2A (for Ref. 237003)		1
2354	Fiber Optics Connector for 2 "FC"- "FC" Pre-terminated Patch Cords Interconnection		5
2356	Fiber Optics Adapter for a "FC"- "SC" Connector Change, of 2 Pre-terminated Patch Cords		5



▲ 2379xx



▲ 237003



▶ 237301



▶ 237311



▶ 236810

ALL THE FUNCTIONS YOU NEED NOW IN YOUR SMARTDEVICE



Smartdevice not included.



**MULTISCREEN AND
REMOTE CONTROL**



**WI-FI AND BLUETOOTH
CONNECTIVITY**



**SERVICES AND IPTV
ANALYZER**



**H.265
HEVC**
High Efficiency Video Coding

h30evolution.televes.com

MEASURING EQUIPMENT

Ref.	Description	
FIELD STRENGTH METERS		
H30FLEX		
593301	H30FLEX: DVB-S/S2 + DVB-T	1
★ 593311	H30FLEX: DVB-S/S2/T (Carrying Case and Coaxial Cable Lead included)	1
593302	H30FLEX: DVB-S/S2 + DVB-T/T2	1
★ 593312	H30FLEX: DVB-S/S2/T/T2 (Carrying Case and Coaxial Cable Lead included)	1
593303	H30FLEX: DVB-S/S2 + DVB-C	1
★ 593313	H30FLEX: DVB-S/S2/C (Carrying Case and Coaxial Cable Lead included)	1
593304	H30FLEX: DVB-S/S2 + DVB-T/T2 + DVB-C	1
★ 593314	H30FLEX: DVB-S/S2/T/T2/C (Carrying Case and Coaxial Cable Lead included)	1
H30FLEX OPTIONS		
593231	Option DVB-T	1
593232	Option DVB-T2 (DVB-T required)	1
593233	Option DVB-C	1
593234	Option dCSS	1
593235	Option Extended Terrestrial Input to 120dBμV	1
593236	Option Analogue A/V Display (Format Adapters and Protective Sleeve included)	1
5909	Calibration of Spectrum Analyzer (Certificate Included) ⁽¹⁾	1
H30EVOLUTION ⁽²⁾		
★ 593501	H30Evolution: DVB-S/S2 + DVB-T	1
★ 593502	H30Evolution: DVB-S/S2 + DVB-T/T2	1
★ 593503	H30Evolution: DVB-S/S2 + DVB-C	1
★ 593504	H30Evolution: DVB-S/S2 + DVB-T/T2 + DVB-C	1
★ 593505	H30Evolution: Full DVB (-S/S2+-T/T2+-C)+IPTV Option+WiFi 2,4/5 GHz Option+HEVC display	1
H30EVOLUTION OPTIONS		
593231	Option DVB-T	1
593232	Option DVB-T2 (DVB-T required)	1
593233	Option DVB-C	1
593234	Option dCSS	1
593235	Option Extended Terrestrial Input to 120dBμV	1
593236	Option Analogue A/V Display (Format Adapters and Protective Sleeve included)	1
★ 593250	Option WiFi Analyzer (2,4/5GHz)	1
★ 593251	Option IPTV Analyzer	1
★ 593252	Option HEVC Display	1
5909	Calibration of Spectrum Analyzer (Certificate Included) ⁽¹⁾	1
H30 (DVB-C)		
593102	H30: DVB-C + Remote Control (Ethernet) + IP Speed Test	1
593104	H30D3: DVB-C + Remote Control (Ethernet) + IP Speed Test + DOCSIS 3.0	1
H30/H30D3 OPTIONS		
593210	Option MPEG Service Information (DVB-C)	1
593202	Replacement Battery	1
593211	Option IP Speed Test	1
593212	Option Advanced API	1
593213	Option Wi-Fi & Bluetooth	1
593214	Option Long Term Monitoring (LTM)	1
5909	Calibration of Spectrum Analyzer (Certificate Included) ⁽¹⁾	1
ACCESSORIES FOR H30 SERIES		
593201	Protective Sleeve (Included by Default in H30 and H30D3 models)	1
★ 593204	Weatherproof Protective Sleeve	1
593239	Carrying Case	1
★ 593203	Power Supply Unit 12V - 2A All Plugs	1

H30EVOLUTION



All the functions you need now in your smartdevice

H30Evolution is a field strength meter that combines the best features of a portable and compact equipment - distinctive of the H30 series - with revolutionary functionalities. Thanks to the innovative multiscreen system based on Wi-Fi/Bluetooth, the meter may be remotely displayed and controlled using any Android or iOS device or a PC, thus providing the flexibility and convenience of a wireless system.

h30evolution.televés.com

[en.televés.com/h30evolution](https://www.youtube.com/watch?v=en.televés.com/h30evolution)

H30FLEX

All the functions you need in your hand



h30flex.televés.com

[en.televés.com/h30flex](https://www.youtube.com/watch?v=en.televés.com/h30flex)



DOCSIS 3.0

H30D3 (593104)

H30 (593102)

(1) Upgrades to be done in Factory.

(2) Smartphone Armband included.

MEASURING EQUIPMENT

Ref.	Description	
FIELD STRENGTH METERS		
MOSAIQ6		
596101	MOSAIQ6: DVB-T/T2 + DVB-S/S2 + DVB-C, CI, F.O. (Carrying Bag included)	1
★ 596102	MOSAIQ6: DVB-T/T2 + DVB-S/S2 + DVB-C, CI, F.O. (Carrying Case included)	1
596111	MOSAIQ6: DVB-T/T2 + DVB-S/S2 + DVB-C, CI, Selective F.O. Interface (CWDM Filter) (Carrying Bag included)	1
★ 596112	MOSAIQ6: DVB-T/T2 + DVB-S/S2 + DVB-C, CI, Selective F.O. Interface (Carrying Case included)	1
MOSAIQ6 OPTIONS		
596201	Option GPS Drive Test	1
596202	Option WiFi 5GHz	1
596203	Option Analogue Measures	1
596204	Option DAB/DAB+	1
596205	Option 4K - Ultra High Definition (UHD)	1
5909	Calibration of Spectrum Analyzer (Certificate Included) ⁽¹⁾	1
MOSAIQ6 ACCESSORIES		
★ 596213	Screen Protector	1
596210	Field Replaceable Battery	1
★ 596214	Carrying Case	1
596211	Carrying Bag	1
596212	Adapter "N" Male - "F" Female	1
FIBER OPTIC TOOLS		
KITS		
232105	F.O Kit: Arc Fusion Splicer + Stripper + Cleaver + Accessories for fusing Connectors ⁽¹⁾	1
2341	F.O Kit: Connector & Mechanical Splicer + Stripper (Ref. 2324) + Cleaver (Ref. 232301) + Cleaning Tools ⁽²⁾	1
ACCESSORIES		
2327	Splicing Protection Sleeve 60mm for FO fusion	200
232701	Splicing Protection Sleeve 43mm for FO fusion	200
2322	Fiber Mechanical Splicer	1
2328	Fiber Mechanical Splices	10
232301	Cleaver of Fiber Optics	1
232310	Kevlar Scissors for Optical Fibers	1
2325	Stripper for Multi-fiber Cables	1
2324	Precision Stripper for Optical Fibers	1
2329	Connectors of Fiber Optics "SC/APC" (with mounting tool)	10
232910	Cleaner for Fiber Optic Connectors	1
232710	F.O. Cleanning Kit: 50 isopropyl alcohol Wipes + 25 Sticks	1
SIGNAL GENERATORS		
2340	OPS3L Triple Light Source (1310, 1490 & 1550nm)	1
4008	SAT Simulator 950...2150MHz	1
593001	SAT Simulator and Noise Generator 5...3000MHz	1
★ 993615	Power Meter for F.O. Networks	1
★ 993616	Visual Fault Locator for F.O. Networks	1



▲ 2341



▲ 232105

MOSAIQ6

Portable meter with high performance and high accuracy for professional installers.



THE POWER OF USER EXPERIENCE

6 SCREENS IN 1

Thanks to its configurable interface, you choose which widgets (up to 6) you want to simultaneously display in the 8" high resolution screen. Check the installation status at a glance.

A TRUE TOUCH SCREEN

This new interface has been designed and also programmed to take full advantage of a touch screen with touch gestures (tap, double tap, long press, drag, spread or pinch). Only in this way is it possible to operate so easily a meter with so many performances.

mosaiq6.televes.com

en.televes.com/mosaiq6



▲ 2340



▲ 232301



▲ 232910

(1) Also includes: Spare set of electrodes, tweezers and carrying case.

(2) Also includes: ref. 2328 (5 units), ref.2329 (10 units), ref.232910 (1 unit and a replacement reel), 10 isopropyl alcohol wipes, 10 sticks for connectors cleaning & carrying bag.

TERRESTRIAL ANTENNAS

Ref.	Description		
INTELLIGENT BOSS ANTENNAS			
ELLIPSE SERIES - with TForce Technology			
★ 148920	Ellipse Terrestrial Antenna UHF (Ch21-48), G 38dBi BOSS ON (Multiple Packing)	LTE700	8
148925	Ellipse Terrestrial Antenna UHF (Ch21-48), G 38dBi BOSS ON PSU included (Single Packing)	LTE700	1/4
148923	Ellipse Terrestrial Antenna UHF (Ch21-48), G 38dBi BOSS ON PSU included, UK plug (Single Packing)	LTE700	1/4
148922	Ellipse Terrestrial Antenna UHF (Ch21-48), G 38dBi BOSS ON PSU included (Multiple Packing)	LTE700	8
148905	Ellipse Terrestrial Antenna UHF (Ch21-60), G 38dBi BOSS ON PSU included (Single Packing)	LTE790	1/4
★ 148903	Ellipse Terrestrial Antenna UHF (Ch21-60), G 38dBi BOSS ON PSU included, UK plug (Single Packing)	LTE790	1/4
148902	Ellipse Terrestrial Antenna UHF (Ch21-60), G 38dBi BOSS ON PSU included (Multiple Packing)	LTE790	8
DAT SERIES - with TForce Technology			
COMBINED VHF/UHF (MIX)			
149421	DAT BOSS MIX Terrestrial Antenna BIII/UHF (Ch5-12/21-48) G 8.5/16dBi BOSS OFF, G 36.5/41dBi BOSS ON (Single Packing)	LTE700	1
149422	DAT BOSS MIX Terrestrial Antenna BIII/UHF (Ch5-12/21-48) G 8.5/16dBi BOSS OFF, G 36.5/41dBi BOSS ON (Multiple Packing)	LTE700	5
149441	DAT BOSS MIX Terrestrial Antenna BIII/UHF (Ch5-12/21-60) G 8.5/16dBi BOSS OFF, G 36.5/44dBi BOSS ON (Single Packing)	LTE790	1
149442	DAT BOSS MIX Terrestrial Antenna BIII/UHF (Ch5-12/21-60) G 8.5/16dBi BOSS OFF, G 36.5/44dBi BOSS ON (Multiple Packing)	LTE790	5
COMBINED BI/VHF/UHF (MIX)			
★ 148220	DAT BOSS MIX Terrestrial Antenna BI/BIII/UHF (Ch2-13/14-51) G -8.5/16dBi BOSS OFF, G 24/36.5/42dBi BOSS ON (Single Packing)	LTE700	1
★ 148281	DAT BOSS MIX Terrestrial Antenna BI/BIII/UHF (Ch2-13/14-51) G -8.5/16dBi BOSS OFF, G 24/36.5/42dBi BOSS ON PSU included 12V-220mA (Single Packing)	LTE700	1
UHF			
149921	DAT BOSS Terrestrial Antenna UHF (Ch21-48) G 17dBi BOSS OFF, G 42dBi BOSS ON (Single Packing)	LTE700	1
149922	DAT BOSS Terrestrial Antenna UHF (Ch21-48) G 17dBi BOSS OFF, G 42dBi BOSS ON (Multiple Packing)	LTE700	6
149941	DAT BOSS Terrestrial Antenna UHF (Ch21-60) G 17dBi BOSS OFF, G 45dBi BOSS ON (Single Packing)	LTE790	1/5
149942	DAT BOSS Terrestrial Antenna UHF (Ch21-60) G 17dBi BOSS OFF, G 45dBi BOSS ON (Multiple Packing)	LTE790	6
LONG RANGE			
149721	DAT BOSS LR Terrestrial Antenna UHF (Ch21-48) G 19dBi BOSS OFF, G 47dBi BOSS ON (Single Packing)	LTE700	1
149740	DAT BOSS LR Terrestrial Antenna UHF (Ch21-60) G 19dBi BOSS OFF, G 47dBi BOSS ON (Single Packing)	LTE790	1
★ 149821	Terrestrial Antenna DAT BOSS MIX LR (C5-12/21-48) G 36.5/46 dBi (Single packing)	LTE700	12
★ 149883	DAT BOSS MIX LR Terrestrial Antenna VHF/UHF (Ch5-13/14-51) G 8.5/18dBi BOSS OFF, G 36.5/46dBi BOSS ON + PSU 550104	LTE700	12
★ 148381	DAT BOSS MIX LR Terrestrial Antenna BI/BIII/UHF (Ch2-13/14-51) G -8.5/18dBi BOSS OFF, G 24/36.5/46dBi BOSS ON PSU included 12V-220mA (Single Packing)	LTE700	1



DISCOVER IT!
en.televes.com/ellipse

INTELLIGENCE TAKEN TO THE LIMIT

A new concept in DTT antenna that eliminates any interference even in limit of the TV band, combining break-through design and the new generation of TForce with SAW filtering in a 100% stainless mechanical frame.



▶ DAT BOSS



▶ DAT BOSS LR



Look for the TForce mark in you intelligent antenna to guarantee the best quality reception.

TForce increases the coverage of a TDT antenna, amplifying almost imperceptible signals and remaining inalterable for very strong signals.



Ask us about our KITS with antenna and PSU.

TERRESTRIAL ANTENNAS

Ref.	Description		
NOVA SERIES (SPECIAL ANTENNAS) - with TForce Technology			
UHF			
144021	DINOVA BOSS Terrestrial Antenna UHF (Ch21-48) G 7dBi BOSS OFF, G 34dBi BOSS ON	LTE700	1
144022	DINOVA BOSS Terrestrial Antenna UHF (Ch21-48) G 7dBi BOSS OFF, G 34dBi BOSS ON (Kit with accessories)	LTE700	1
144011	DINOVA BOSS Terrestrial Antenna UHF (Ch21-60) G 7dBi BOSS OFF, G 34dBi BOSS ON	LTE790	1
VHF/UHF(MIX)			
144012	DINOVA BOSS Terrestrial Antenna UHF (Ch21-60) G 7dBi BOSS OFF, G 34dBi BOSS ON (Kit with accessories)	LTE790	1
★ 144211	DINOVA BOSS MIX Terrestrial Antenna VHF/UHF(Ch5-12/21-60) G 1/6dBi BOSS OFF, G 24/33dBi BOSS ON	LTE790	1
★ 144212	DINOVA BOSS MIX Terrestrial Antenna VHF/UHF(Ch5-12/21-60) G 1/6dBi BOSS OFF, G 24/33dBi BOSS ON (Kit with accessories)	LTE790	1
★ 144221	DINOVA BOSS MIX Terrestrial Antenna VHF/UHF(Ch5-12/21-48) G 1/6dBi BOSS OFF, G 24/33dBi BOSS ON	LTE700	1
★ 144222	DINOVA BOSS MIX Terrestrial Antenna VHF/UHF(Ch5-12/21-48) G 1/6dBi BOSS OFF, G 24/33dBi BOSS ON (Kit with accessories)	LTE700	1
★ 144282	DINOVA BOSS MIX Terrestrial Antenna HighVHF/UHF (Ch7-13/14-51) G -7dBi BOSS OFF, G 24/34dBi BOSS ON PSU included 12V-220mA (Kit with accessories)	LTE700	1
144422	OMNINOVA BOSS Terrestrial Antenna BI/FM/BIII/UHF(Ch21-48) G 17/16/25/25dBi BOSS ON (Kit with accessories)	LTE700	1
144442	OMNINOVA BOSS Terrestrial Antenna BI/FM/BIII/UHF(Ch21-60) G 17/16/25/25dBi BOSS ON (Kit with accessories)	LTE790	1
★ 144481	OMNINOVA BOSS Terrestrial Antenna LowVHF/FM/HighVHF/UHF G 17/16/25/25dBi + Power Supply Unit 550104	LTE700	1
NOVA SERIES (SPECIAL ANTENNAS)			
144501	CAMPNOVA BOSS Terrestrial Antenna FM/BIII/UHF G -2/10/22dBi BOSS ON (Kit with accessories)	LTE790	1
★ 144521	CAMPNOVA BOSS Terrestrial Antenna FM/BIII/UHF C(5-12/21-48) G -2/10/22dBi BOSS ON (Kit with accessories)	LTE700	1
TV MOTION SYSTEM - DTT ON THE MOVE			
		LTE790	
144740	TRINOVA BOSS Terrestrial Antenna UHF G 25dBi (for Ref. 512501)		1
512501	TRIMOTION Digital Terrestrial Set-top Box (for Ref. 144740)		1
INTELLIGENT BOSS ANTENNAS			
INDOOR SERIES - with TForce Technology			
UHF			
130220	INNOVA BOSS Indoor Terrestrial Antenna UHF (Ch21-48) G 20dBi (USB-microUSB cable included, for 5V powering)	LTE700	1
UHF/VHF (MIX)			
130240	INNOVA BOSS Indoor Terrestrial Antenna UHF (Ch21-60) G 20dBi (USB-microUSB cable included, for 5V powering)	LTE790	1
★ 130501	BEXIA Indoor Terrestrial Antenna VHF/UHF (Ch5-12/21-48) G 15/18dBi (USB-microUSB cable included, for 5V powering)	LTE700	1
★ 130320	INNOVA BOSS MIX Indoor Terrestrial Antenna VHF/UHF (Ch5-12/21-48) G 17/20dBi (USB-microUSB cable included, for 5V powering)	LTE700	1
★ 130340	INNOVA BOSS MIX Indoor Terrestrial Antenna VHF/UHF (Ch5-12/21-60) G 17/20dBi (USB-microUSB cable included, for 5V powering)	LTE790	1
★ 130381	INNOVA BOSS MIX Indoor Terrestrial Antenna LowVHF/HighVHF/UHF (Ch2-6/7-13/14-51) G 15/26/27dBi (USB-microUSB 5V power supply cable included)	LTE700	1
Q-BOSS			
		LTE790	
561902	Q-BOSS 782 "EasyF" UHF (Ch21-59) G 15dB Vo 101dBμV		10
561901	Q-BOSS 790 "EasyF" UHF (Ch21-60) G 15dB Vo 101dBμV		10
INTELLIGENCE ACTIVATION ACCESSORIES (BOSS Tech)			
560541	PicoKom Domestic Amplifier 1i/1o "EasyF": 47...790MHz G 14/20dB Vo 102/106dBμV Auto-Adjustment + Preamp.Pow. 12V-150mA		1/10
560542	PicoKom Domestic Amplifier 1i/2o "EasyF": 47...790MHz G 10/16dB Vo 98/102dBμV Auto-Adjustment + Preamp.Pow. 12V-150mA		1/10



▷ DINOVA BOSS



▷ OMNINOVA BOSS



▷ INNOVA BOSS



▷ Q-BOSS



▷ 545720



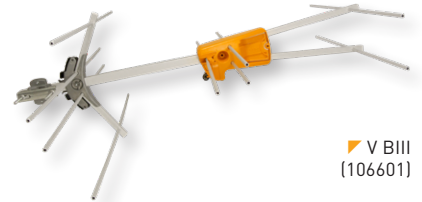
Ask us about our KITS with antenna and PSU.

TERRESTRIAL ANTENNAS

Ref.	Description		
INTELLIGENCE ACTIVATION ACCESSORIES (BOSS Tech)			
560543	PicoKom Domestic Amplifier 1i/(2o+TV) "EasyF": 47...790MHz G 10/16dB Vo 98/102dBuV Auto-Adjustment + Preamp.Pow. 12V-150mA		1/10
545720	Domestic Amplifier 1i/(2o+TV) "IEC": 47...694MHz G 20dB Vs 110dBuV + Output TV Outlet G 12dB + Preamp.Pow. 12V-100mA (Blister T1)	LTE700	8
545801	Auto-LTE Domestic Amplifier 1i/(2o+TV) "F": 47...694/782MHz G 20dB Vo 101dBuV Auto-Adjustment + Output to a TV Outlet G 11dB + Preamplifier Powering 12V-100mA (Blister T1)	AUTO LTE	8
★ 545802	Auto-LTE Domestic Amplifier 1i/(2o+TV) "F": 47...694/790MHz G 20dB Vo 101dBuV Auto-Adjustment + Output to a TV Outlet G 11dB + Preamplifier Powering 12V-100mA, UK plug (Blister T1)	AUTO LTE	6
★ 545901	Auto-LTE Domestic Amplifier 1i/(2o+TV) "F": 47...694/782MHz G 20dB Vo 101dBuV w/USOS + Output to a TV Outlet G 11dB + Preamplifier Powering 12V-100mA	AUTO LTE	1
5795	PicoKom Domestic Power Supply Unit 1i/2o "EasyF": 5...862MHz 24V-130mA		1/10
5504	Domestic Power Supply Unit 1i/2o "F" 5...862MHz 24V-130mA		1
5796	PicoKom Domestic Power Supply Unit 1i/1o "EasyF" SATmix: 5...2400MHz 12V-220mA		1/10
5501	Domestic Power Supply Unit 1i/2o "F" 5...862MHz 12V-220mA (UK Plug)		1
PROTECTION ACCESSORIES			
4947	Coaxial Atmospheric Surge Arrestor 90V 0...3GHz		1/20
★ 494710	Kit: 4xSurge Arrestor and Earth bar, 9x" F" Female		1
★ 494711	Kit: 11xSurge Arrestor and Earth bar, 11x" F" Female		1
PASSIVE ANTENNAS			
FM			
1201	FM Terrestrial Antenna 88...108MHz Circular G 1dBi		1/5
VHF, BAND III & DAB			
1050	BIII/DAB Terrestrial Antenna 174...240MHz 3 Elements G 8dBi (Single Packing)		1
105001	BIII/DAB Terrestrial Antenna 174...240MHz 3 Elements G 8dBi (Multiple Packing)		5
106501	BIII Terrestrial Antenna (Ch5-12) 7 Elements G 9.5dBi (Single Packing)		1
106601	V BIII Terrestrial Antenna (Ch5-12) 10 Elements G 9dBi (Single Packing)		1/6
COMBINED VHF/ UHF (MIX)			
149321	V ZENIT MIX Terrestrial Antenna BIII/UHF (Ch 5-12 / 21-48) G 8.5/13dBi (Single Packing)	LTE700	1
149301	V ZENIT MIX Terrestrial Antenna BIII/UHF (Ch 5-12 / 21-58/59/60 Configurable bandwidth) G 8.5/15dBi (Single Packing)	LTE790	1
149302	V ZENIT MIX Terrestrial Antenna BIII/UHF (Ch 5-12 / 21-58/59/60 Configurable bandwidth) G 8.5/15dBi (Multiple Packing)	LTE790	10
UHF			
802440	Yagi Terrestrial Antenna UHF (Ch21-60) 10 Elements G 8.5dBi	LTE790	15
802441	Yagi Terrestrial Antenna UHF (Ch21-60) 10 Elements G 8.5dBi Black	LTE790	15
111942	Yagi Edge Terrestrial Antenna UHF (Ch21-60) 12 Elements G 10dBi (Single Packing)	LTE790	1
111940	Yagi Edge Terrestrial Antenna UHF (Ch21-60) 12 Elements G 10dBi (Multiple Packing)	LTE790	15
111941	Yagi Edge Terrestrial Antenna UHF (Ch21-60) 12 Elements G 10dBi Black (Multiple Packing)	LTE790	15
112140	L 790 Terrestrial Antenna UHF (Ch21-60) 18 Elements G 13dBi	LTE790	6
112141	L 790 Terrestrial Antenna UHF (Ch21-60) 18 Elements G 13dBi Black	LTE790	6
★ 112120	L 700 Terrestrial Antenna UHF (Ch21-48) 18 Elements G 13dBi	LTE700	6
★ 112121	L 790 Terrestrial Antenna UHF (Ch21-60) 18 Elements G 13dBi Black	LTE700	6
149221	V ZENIT Terrestrial Antenna UHF (Ch21-48) G 13dBi (Single packing)	LTE700	1/6
149222	V ZENIT Terrestrial Antenna UHF (Ch21-48) G 13dBi (Multiple packing)	LTE700	10
149201	V ZENIT Terrestrial Antenna UHF (Ch21-58/59/60 Configurable bandwidth) G 15dBi (Single Packing)	LTE790	1/6
149202	V ZENIT Terrestrial Antenna UHF (Ch21-58/59/60 Configurable bandwidth) G 15dBi (Multiple Packing)	LTE790	10
108320	Panel Terrestrial Antenna UHF(Ch21-48) 4 Dipoles G 13dBi	LTE700	1
108341	Panel Terrestrial Antenna UHF(Ch21-60) 4 Dipoles G 14dBi Black	LTE790	1
EXTENDED 4G COVERAGE			
650101	4GNOVA Antenna 4G/LTE 698...960/1700...2700MHz G 7dBi (0.7m Female "N")		1
650102	4GNOVA Antenna 4G/LTE 698...960/1700...2700MHz G 7dBi (7.5m Male "SMA")		1
★ 650302	Kit: 2x 4G/LTE MIMO Antenna "SMA" 698...960/1700...2700MHz G 1/4dBi		1



FM



V BIII (106601)



Yagi Edge (111940 & 111942)



L 790 (112140)



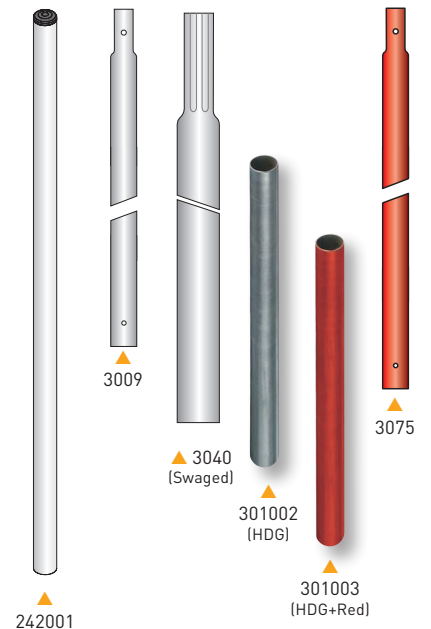
V ZENIT



V ZENIT MIX

TERRESTRIAL ANTENNAS

Ref.	Description		
MASTS & SUPPORTS			
ZINC+RCP MASTS			
3040	Swaged Mast Zinc+RCP 1.5m x Ø 40mm x Thickness 1.25mm	G	6
3041	Swaged Mast Zinc+RCP 2m x Ø 40mm x Thickness 1.25mm	G	4
242001	Mast Zinc+RCP 1m x Ø 35mm x Thickness 1mm	G	6
★ 300601	Mast Zinc+RCP 1.45m x Ø 40mm x Thickness 2mm	G	6
2407	Mast Zinc+RCP 1.45m x Ø 35mm x Thickness 1.5mm	G	8
3008	Mast Zinc+RCP 2.5m x Ø 35mm x Thickness 1.5mm	G	6
3042	Mast Zinc+RCP 2.5m x Ø 35mm x Thickness 1mm	G	6
3009	Mast Zinc+RCP 2.5m x Ø 40mm x Thickness 2mm	G	4
3072	Mast Zinc+RCP 3m x Ø 40mm x Thickness 2mm	G	4
3010	Mast Zinc+RCP 3m x Ø 45mm x Thickness 2mm	G	4
HOT-DIP GALVANIZED MASTS			
301002	Mast HDG 3m x Ø 45mm x Thickness 2mm	G	4
301003	Mast HDG+Red 3m x Ø 45mm x Thickness 2mm	R	1
ZINC+COLOUR MASTS			
307502	Mast Zinc+White 2m x Ø 45mm x Thickness 2mm	W	4
3075	Mast Zinc+Red 3m x Ø 45mm x Thickness 2mm	R	4
CLAMPS			
2117	Mast Clamp Zinc+RCP for Window 586x300mm x Ø30mm	G	1
SUPPORTS FOR CHIMNEY			
2414	Tubular Mast Bracket Zinc+RCP for Chimney 415x345mm x Ø 30mm	G	1
2415	Reinforced Mast Bracket Zinc+RCP for Chimney 396x400mm	G	1
SUPPORTS FOR BOLTING			
2401	"L" Mast Bracket Zinc+RCP for Bolting 300mm	G	10
2403	"W" Mast Bracket Zinc+RCP for Bolting 250mm	G	10
2404	"U" Mast Bracket Zinc+RCP for Bolting 500mm	G	6
240410	"U" Mast Bracket Zinc+RCP for Bolting 300mm	G	6
2409	Angled Mast Bracket Zinc+RCP for Bolting 128mm	G	10
SUPPORTS FOR EMBEDDING			
2405	"I" Mast Bracket Zinc+RCP for Embedding 350mm	G	6
2406	"U" Reinforced Mast Bracket Zinc+RCP for Embedding 500mm	G	6
2410	"U" Reinforced Mast Bracket Zinc+RCP for Embedding 250mm	G	10
ACCESSORIES			
2047	Jaw Clamp Zinc+RCP for Masts Up Ø 25...45mm	G	10
2408	Saddle & Clamp Zinc+RCP for Guy Wire, Inner Ø 46mm	G	10
2412	Corner Piece Zinc+RCP for Chimney	G	10
2413	Mast Clamp Zinc+RCP Ø 35mm	G	6
CABLE CLIPS			
2000	Opened Clip for Coaxial Cable (100 units)		1/10
2011	Closed Clip for Coaxial Cable (100 units)		1/20
STEEL WIRES			
2043	Galvanized Steel Wire Ø 2mm		100
3034	Galvanized Steel Wire Ø 4mm		100
3059	Galvanized Steel Wire Ø 5mm		100
306001	Galvanized Steel Wire Ø 6mm		200



Galvanized steel wires (mm)

SATELLITE ANTENNAS

Ref.	Description		
QSD SERIES (Quality Satellite Dishes)			
ALUMINIUM OFFSET DISHES			
7902	QSD High Quality Offset Dish 75 Aluminium G 38.5dBi (750x850mm) Orange	○	1
790204	QSD High Quality Offset Dish 75 Aluminium G 38.5dBi (750x850mm) White	Ⓜ	1
7903	QSD High Quality Offset Dish 85 Aluminium G 39.5dBi (850x950mm) Orange	○	1
790304	QSD High Quality Offset Dish 85 Aluminium G 39.5dBi (850x950mm) White	Ⓜ	1
ISD SERIES (Inox Satellite Dishes)			
ALUMINIUM OFFSET DISHES			
793001	ISD Offset Dish 630 Aluminium G 36.2dBi Orange	○	1
793002	ISD Offset Dish 630 Aluminium G 36.2dBi White	Ⓜ	1
793003	ISD Offset Dish 630 Aluminium G 36.2dBi Graphite	Gr	1
793004	ISD Offset Dish 630 Aluminium G 36.2dBi Red-brick	Rb	1
793011	ISD Offset Dish 630 Aluminium G 36.2dBi Orange (Multiple packing)	○	10
793012	ISD Offset Dish 630 Aluminium G 36.2dBi White (Multiple packing)	Ⓜ	10
793013	ISD Offset Dish 630 Aluminium G 36.2dBi Graphite (Multiple packing)	Gr	10
793014	ISD Offset Dish 630 Aluminium G 36.2dBi Red-brick (Multiple packing)	Rb	10
793101	ISD Offset Dish 830 Aluminium G 39dBi Orange	○	1
793102	ISD Offset Dish 830 Aluminium G 39dBi White	Ⓜ	1
793103	ISD Offset Dish 830 Aluminium G 39dBi Graphite	Gr	1
793104	ISD Offset Dish 830 Aluminium G 39dBi Red-brick	Rb	1
793111	ISD Offset Dish 830 Aluminium G 39dBi Orange (Multiple packing)	○	5
793112	ISD Offset Dish 830 Aluminium G 39dBi White (Multiple packing)	Ⓜ	5
793113	ISD Offset Dish 830 Aluminium G 39dBi Graphite (Multiple packing)	Gr	5
793114	ISD Offset Dish 830 Aluminium G 39dBi Red-brick (Multiple packing)	Rb	5
SATELLITE DISHES			
ALUMINIUM OFFSET DISHES			
757401	Offset Dish 1300 Aluminium G 42dBi White (Multiple packing)	Ⓜ	10



▲ 793004

▲ 793003

▲ 793002

Compatibility between supports & dishes

Ø Support	35	45	48	60			
Dishes	7393	7349	7371	719202	757602	7576	719201
ISD	✓	✓	✓	✓	✓	✓	✓
QSD	✗	✓	✓	✓	✓	✓	✓
Other typical sizes							
600	✓	✓	✓	✓	✗	✗	✗
800	✓	✓	✓	✓	✓	✓	✓
1000	✗	✗	✗	✓	✗	✓	✓
1100	✗	✗	✗	✗	✗	✓	✓
1300	✗	✗	✗	✗	✗	✓	✓

QSD SERIES



○ Ⓜ

The long life alluminium dish, quality signal reception for life. TÜV approved (german certifying organization).

ISD SERIES



○ Ⓜ Gr Rb

This new range of satellite dishes is built using aluminium and stainless steel to guarantee the protection against rust. The bracket and LNB holder are built using a special polymer widely used in a highly professional sector, and reinforced with fiberglass for an extreme resistance. Its improved structure has been designed to make assembly easier.

en.televes.com/isd



▲ 757401

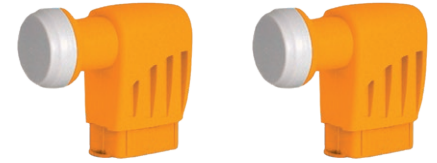
SATELLITE ANTENNAS

Ref.	Description		
LNBs			
OFFSET			
7475	Offset LNB Single (Universal) Hh/Vh/HI/VI G 60dB		1/10
747701	Offset LNB Quattro Hh-Vh-HI-VI G 60dB		1/30
747802	Offset LNB Twin (2 Outputs Hh/Vh/HI/VI) G 60dB		1/30
761001	Offset LNB Quad (4 Outputs Hh/Vh/HI/VI) G 60dB		1/30
7613	Offset LNB Octo (8 Outputs Hh/Vh/HI/VI) G 60dB		1/30
7611	Offset LNB Monoblock (2 Universal LNBs) G 57dB Grey. 830 dishes only		1/30
★ 747322	dLNB Offset 1 Output 8xSCR/dCSS+8xdCSS Dynamic, Grey		1/30
OPTICAL FIBER			
2353	Offset Optical LNB 1310nm "FC/PC" G 72dB Po 7dBm (Up to 32 converters), Grey		1
2363	P.F. Optical LNB 1310nm "FC/PC" G 72dB Po 7dBm Grey		1
ACCESSORIES			
★ 723301	dLNB Programmer		1
7450	Current Injector 10...2150MHz 1...24Vdc-1.5A		1/20
7485	Line Amplifier 1i/1o "F": UHF/SAT[dc] G -2.5/20dB Vo 112.5dBμV		1/10
7268	DiSEqC 2.0 Switch 2i/1o 0...2400MHz		1/10
4163	Outdoor Case Grey Large Model Dimensions: External 136x127x45mm Internal 125x97x35mm		1/5
BRACKETS & FIXING ACCESSORIES			
HOT-DIP GALVANIZED BRACKETS			
757602	"T" Bracket HDG Ground Mount 1000x200mm / Ø48mm x Thickness 2.9mm		1
GALVANIZED BRACKETS			
719201	"Y" Bracket Galvanized Wall/Ground Mount 551x439mm or 620x247mm / Ø 60mm x Thickness 1.5mm		5
719202	"Y" Bracket Galvanized Wall/Ground Mount 728x473mm or 720x481mm / Ø 45mm x Thickness 1.5mm		1
ZINC+RCP BRACKETS			
7393	"L" Bracket Zinc+RCP Wall Mount 284x194mm / Ø 35mm x Thickness 1.5mm		10
7349	"L" Bracket Zinc+RCP Wall Mount 380x350mm / Ø 45mm x Thickness 1.5mm		5
7371	"L" Bracket Zinc+RCP Wall Mount 500x450mm / Ø 45mm x Thickness 2mm		5
7576	"T" Bracket Zinc+RCP Ground Mount 750x200mm / Ø 60mm x Thickness 2.9mm		1
BASES			
7409	Embedded Base Zinc+RCP for Ref.7576 or 757602, Height 200mm		1
MULTISATELLITE SUPPORTS			
790901	Multi-feed Support Up to 4 SAT, QSD Dishes Includes: Rail (up to 20°) + 1 LNB Support (Ref.790902)		1/10
790902	LNB Support for QSD Dishes		1/10



▲ 7475 (SINGLE)

▲ 747802 (TWIN)



▲ 747701 (QUATTRO)

▲ 761001 (QUAD)



▲ 2353



▲ 7450



▲ 7485



▲ 7268



▲ 757602



▲ 7393

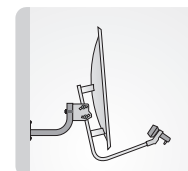


▲ 790901

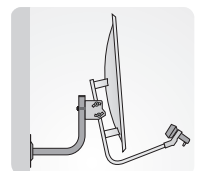
Galvanized brackets

Ref.	Wall mount (mm)	Ground mount (mm)
719201	551 x 439	620 x 247
719202	728 x 473	720 x 481

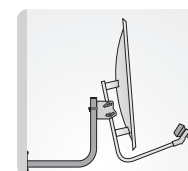
Wall Ground



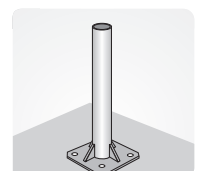
▲ 7393



▲ 7349



▲ 7371



▲ 7576

TOWERS

Ref.	Description		
PACK TOWER			
COMPLETE TOWER			
306501	"Pack" Tower Galvanized+Orange 2.2m (Mast and Accessories included)		1
180 SE TOWER			
ZINC+RCP SECTIONS			
3014	Upper Section 180 SE Tower Zinc+RCP 1.25m (mast Ømax 35mm)		1
3015	Upper Section 180 SE Tower Zinc+RCP 2.5m, with Wire Ring (mast Ømax 35mm)		1
3017	Middle Section 180 SE Tower Zinc+ RCP 2.5m		1
ACCESSORIES			
3019	Fixed Embedded Base 180 SE Tower Zinc+RCP		1
3020	Fixed Bolting Base 180 SE Tower Zinc+RCP		1
180 TOWER			
ZINC+RCP SECTIONS			
3021	Upper Section 180 Tower Zinc+RCP 1m (mast Ømax 46mm)		1
3032	Upper Section 180 Tower Zinc+RCP 3m (mast Ømax 46mm)		1
3031	Middle Section 180 Tower Zinc+RCP 3m		1
3037	Lower Section Pivoting 180 Tower Zinc+RCP 3m		1
HOT-DIP GALVANIZED SECTIONS			
303201	Upper Section 180 Tower HDG 3m (mast Ømax 46mm)		1
303101	Middle Section 180 Tower HDG 3m		1
303701	Lower Section Pivoting 180 Tower HDG 3m		1
HOT-DIP GALVANIZED SECTIONS + PAINTING			
★ 303203	Upper Section 180 Tower HDG+White 3m (mast Ømax 46mm)		1
★ 303103	Middle Section 180 Tower HDG+White 3m		1
★ 303803	Fixed Bolting/Embedded (with frame) Base 180 Tower HDG+White		1
ACCESSORIES			
3058	Guy Wire Ring 180/360 Tower Zinc+RCP		20
305801	Guy Wire Ring 180/360 Tower HDG		20
3029	Embedded Frame 180 Tower Zinc+RCP for Fixed Base (Ref. 3038)		1
3038	Fixed Bolting/Embedded (with frame) Base 180 Tower Zinc+RCP		1
303801	Fixed Bolting/Embedded (with frame) Base 180 Tower HDG		1
3048	Pivoting Embedded Base 180 Tower Zinc+ RCP		1
304801	Pivoting Embedded Base 180 Tower HDG		1
305001	Structural Cube 180 Tower Zinc+RCP 200mm		1
3034	Galvanized Steel Wire Ø 4mm		100
Q1500 TOWER (Stainless Steel)			
COMPLETE TOWER			
3049	Q1500 Tower Kit Stainless Steel 14.5m Stainless Steel Accessories included (Guy Wire at 1.5m)		1
304910	Q1500 Tower Bases Stainless Steel (1 tower base & 3 guy wire bases)		1



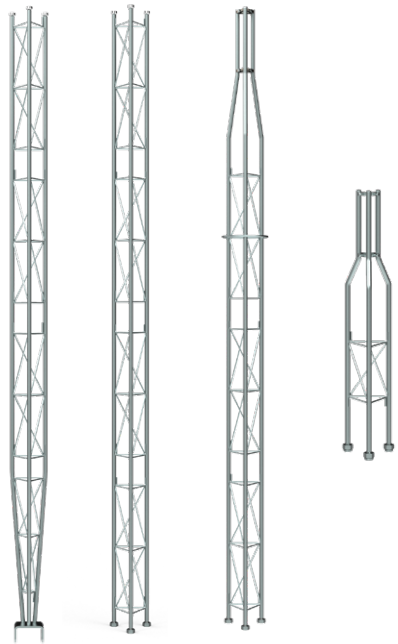
3048xx

Types of finishing

	HDG	Hot-Dip Galvanized
	Zinc + RCP	Zinc plated + Reactive Coating Process
	HDG + Painting	Hot-Dip Galvanized + Lacquered in oven with electrostatic powder of polyester
	Zinc + Painting	Zinc plated + Lacquered in oven with electrostatic powder of polyester



▲ Pack Tower
(Compatible with support Ref. 7349)

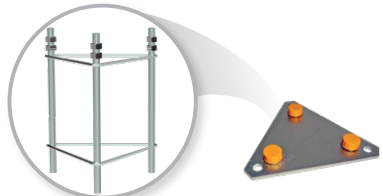


▲ 180 Sections



INOX316

▲ Q1500 Tower (Stainless Steel)
(Ref. 3049 + Ref. 304910)

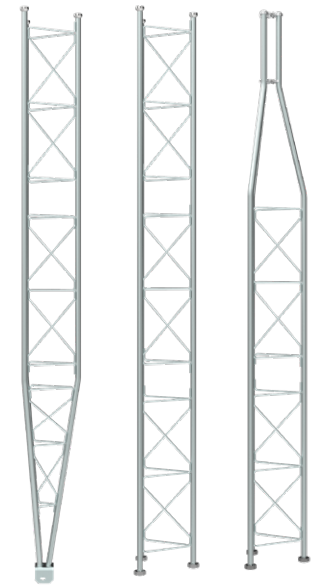


▲ 3029 (Frame)

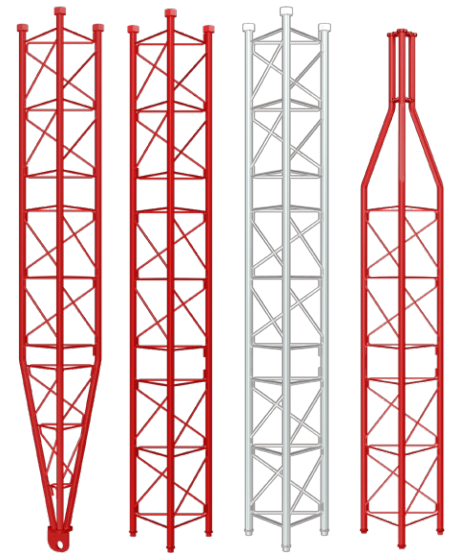
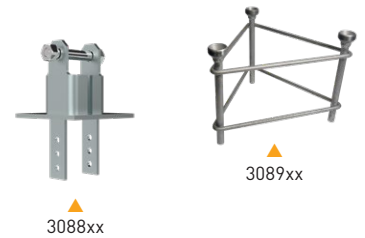
▲ 3038xx

TOWERS

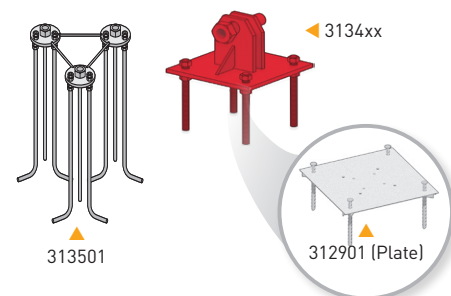
Ref.	Description		
360 TOWER			
ZINC+RCP SECTIONS			
3085	Upper Section 360 Tower Zinc+RCP 3m (mast Ømax 52mm)	G	1
3087	Middle Section 360 Tower Zinc+RCP 3m	G	1
3086	Lower Section Pivoting 360 Tower Zinc+RCP 3m	G	1
ZINC+PAINTING SECTIONS			
308501	Upper Section 360 Tower Zinc+Red 3m (mast Ømax 52mm)	R	1
308502	Upper Section 360 Tower Zinc+White 3m (mast Ømax 52mm)	W	1
308701	Middle Section 360 Tower Zinc+Red 3m	R	1
308702	Middle Section 360 Tower Zinc+White 3m	W	1
308601	Lower Section Pivoting 360 Tower Zinc+Red 3m	R	1
308602	Lower Section Pivoting 360 Tower Zinc+White 3m	W	1
HOT-DIP GALVANIZED SECTIONS			
308503	Upper Section 360 Tower HDG 3m (mast Ømax 52mm)	G	1
308703	Middle Section 360 Tower HDG 3m	G	1
308603	Lower Section Pivoting 360 Tower HDG 3m	G	1
HOT-DIP GALVANIZED+PAINTING SECTIONS			
308504	Upper Section 360 Tower HDG+Red 3m (mast Ømax 52mm)	R	1
308704	Middle Section 360 Tower HDG+Red 3m	R	1
308705	Middle Section 360 Tower HDG+White 3m	W	1
308604	Lower Section Pivoting 360 Tower HDG+Red 3m	R	1
308605	Lower Section Pivoting 360 Tower HDG+White 3m	W	1
ACCESSORIES			
3088	Pivoting Bolting/Embedded Base 360 Tower Zinc+RCP	G	1
308801	Pivoting Bolting/Embedded Base 360 Tower HDG	G	1
3089	Fixed Embedded Base 360 Tower Zinc+RCP	G	1
308901	Fixed Embedded Base 360 Tower HDG	G	1
3058	Guy Wire Ring 180/360 Tower Zinc+RCP	G	20
305801	Guy Wire Ring 180/360 Tower HDG	G	20
3059	Galvanized Steel Wire Ø 5mm		100
450 TOWER			
ZINC+PAINTING SECTIONS			
3133	Upper Section 450 Tower Zinc+Red 3m (mast Ømax 62mm)	R	1
3131	Middle Section 450 Tower Zinc+Red 3m	R	1
313101	Middle Section 450 Tower Zinc+White 3m	W	1
3132	Middle Section Reinforced 450 Tower Zinc+Red 3m	R	1
313201	Middle Section Reinforced 450 Tower Zinc+White 3m	W	1
3130	Lower Section Pivoting Reinforced 450 Tower Zinc+Red 3m	R	1
HOT-DIP GALVANIZED+PAINTING SECTIONS			
313301	Upper Section 450 Tower HDG+Red 3m (mast Ømax 62mm)	R	1
313102	Middle Section 450 Tower HDG+Red 3m	R	1
313103	Middle Section 450 Tower HDG+White 3m	W	1
313202	Middle Section Reinforced 450 Tower HDG+Red 3m	R	1
313203	Middle Section Reinforced 450 Tower HDG+White 3m	W	1
313001	Lower Section Pivoting Reinforced 450 Tower HDG+Red 3m	R	1
ACCESSORIES			
312901	Surface Plate 450/550 Tower for Pivoting Base (Refs. 3134xx & 3142xx) Zinc+RCP	G	1
★ 314502	Buried Plate 450XL Tower with Guy Wire Ring HDG	G	1
3134	Pivoting Embedded/Bolting (with plate) Base 450 Tower Zinc+Red	R	1
313401	Pivoting Embedded/Bolting (with plate) Base 450 Tower HDG	G	1
313501	Fixed Embedded Base 450 Tower Zinc+RCP	G	1
3144	Guy Wire Ring 450/550 Tower Zinc+RCP	G	1
314401	Guy Wire Ring 450/550 Tower HDG	G	1
306001	Galvanized Steel Wire Ø 6mm		200



▲ 360 Sections



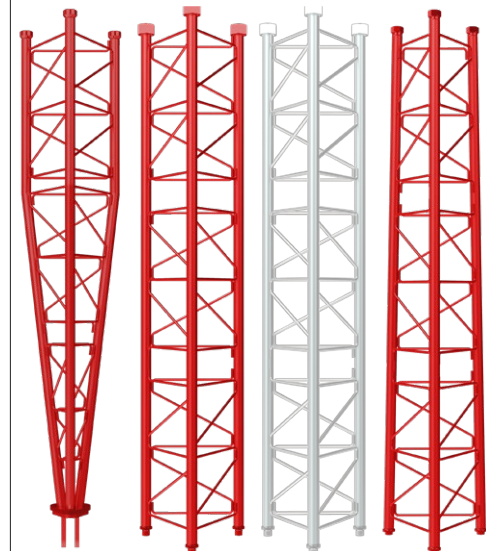
▲ 450 Sections



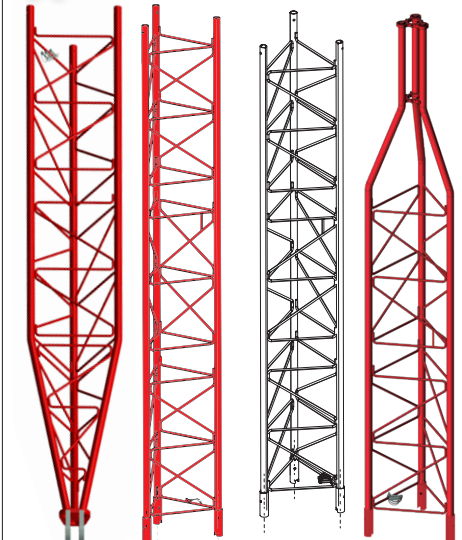
TOWERS

Televes

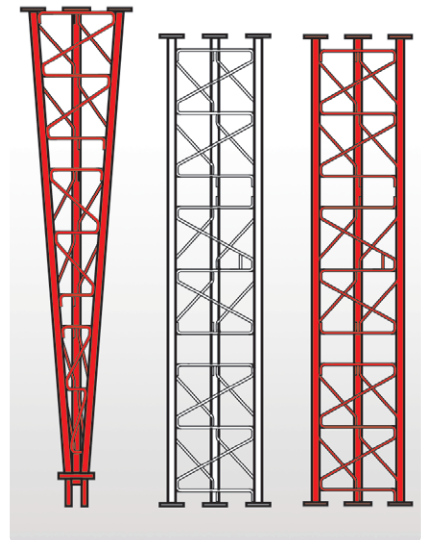
Ref.	Description		
550 TOWER			
ZINC+PAINTING SECTIONS			
3141	Transition Section 550 to 450 Tower Zinc+Red 3m	R	1
3140	Middle Section 550 Tower Zinc+Red 3m	R	1
314001	Middle Section 550 Tower Zinc+White 3m	W	1
313901	Lower Section Pivoting 550 Tower Zinc+Red 3m	R	1
HOT-DIP GALVANIZED+PAINTING SECTIONS			
314101	Transition Section 550 to 450 Tower HDG+Red 3m	R	1
314002	Middle Section 550 Tower HDG+Red 3m	R	1
314003	Middle Section 550 Tower HDG+White 3m	W	1
313902	Lower Section Pivoting 550 Tower HDG+Red 3m	R	1
ACCESSORIES			
312901	Surface Plate 450/550 Tower for Pivoting Base (Refs. 3134xx & 3142xx) Zinc+RCP	G	1
3142	Pivoting Embedded/Bolting (with plate) Base 550 Tower Zinc+Red	R	1
314201	Pivoting Embedded/Bolting (with plate) Base 550 Tower HDG+Red	R	1
3143	Fixed Embedded Base 550 Tower Zinc+RCP	G	1
314301	Fixed Embedded Base 550 Tower HDG	G	1
3144	Guy Wire Ring 450/550 Tower Zinc+RCP	G	1
314401	Guy Wire Ring 450/550 Tower HDG	G	1
306001	Galvanized Steel Wire Ø 6mm		200
450XL - REINFORCED TOWER ⁽¹⁾			
313311	Upper Section 450XL Tower HDG+Red 3m (mast Ømax 62mm)	R	1
313112	Middle Section 450XL Tower HDG+Red 3m	R	1
313113	Middle Section 450XL Tower HDG+White 3m	W	1
313212	Middle Section Reinforced 450XL Tower HDG+Red 3m	R	1
313213	Middle Section Reinforced 450XL Tower HDG+White 3m	W	1
313011	Lower Section Pivoting Reinforced 450XL Tower HDG+Red 3m	R	1
ACCESSORIES			
313412	Pivoting Embedded/Bolting (with plate) Base 450XL Tower HDG+Red	R	1
312901	Surface Plate 450/550 Tower for Pivoting Base (Refs. 3134xx & 3142xx) Zinc+RCP	G	1
★ 314502	Buried Plate 450XL Tower with Guy Wire Ring HDG	G	1
550XL - REINFORCED TOWER ⁽¹⁾			
HOT-DIP GALVANIZED+PAINTING SECTIONS			
313810	Top Mast Holder 550XL Reinforced Tower HDG+Red 0.25m (mast Ømax 62mm)	R	1
314010	Middle Section 550XL Reinforced Tower HDG+Red 3m	R	1
314011	Middle Section 550XL Reinforced Tower HDG+White 3m	W	1
313911	Lower Section Pivoting 550XL Reinforced Tower HDG+Red 3m	R	1
ACCESSORIES			
314210	Pivoting Embedded Base 550XL Reinforced Tower HDG+Red	R	1
314401	Guy Wire Ring 450/550 Tower HDG	G	1



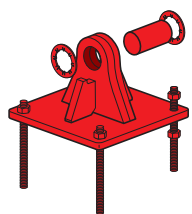
▲ 550 Sections



▲ 450XL Sections



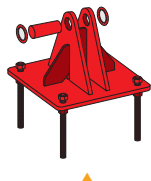
▲ 550XL Sections - Reinforced



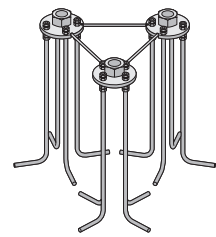
▲ 314210



▲ 313810



▲ 3142/314201

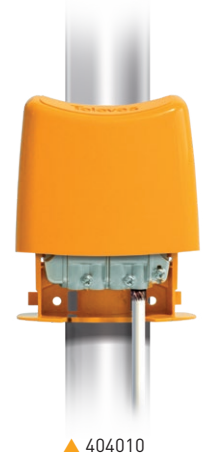


▲ 3143xx

(1) Due to their assembly system, sections of these towers are not compatible with the rest of the tower range.

FILTERS & COMBINERS

Ref.	Description		
LTE FILTERS			
"EasyF" CONNECTOR			
405202	High Rejection LTE Filter (HR) "EasyF" 47...694MHz VHF/UHF (Ch21-48) Outdoor	LTE700	1/10
★ 405203	High Rejection LTE Filter (HR) "EasyF" 47...694MHz VHF/UHF (Ch48) Outdoor (DC Pass)	LTE700	1/10
405101	Medium Rejection LTE Filter (MR) "EasyF" 470...774MHz UHF (Ch21-58) Outdoor	LTE790	1/10
405402	High Rejection LTE Filter (HR) "EasyF" 47...782MHz VHF/UHF (Ch21-59) Outdoor	LTE790	1/10
★ 405403	High Rejection LTE Filter (HR) "EasyF" 47...782MHz VHF/UHF (Ch21-59) Outdoor (DC Pass)	LTE790	1/10
405401	High Rejection LTE Filter (HR) "EasyF" 47...790MHz VHF/UHF (Ch21-60) Outdoor	LTE790	1/10
"F" CONNECTOR			
403201	Medium Rejection LTE Filter (MR) "F" 47...694MHz VHF/UHF (Ch21-48), Indoor	LTE700	1/10
★ 403220	High Rejection LTE Filter (HR) "F" 47...694MHz VHF/UHF (Ch48) Indoor	LTE700	1/10
403101	Medium Rejection LTE Filter (MR) "F" 470...774MHz UHF (Ch21-58) Indoor	LTE790	1/10
403402	High Rejection LTE Filter (HR) "F" 47...782MHz VHF/UHF (Ch21-59) Indoor	LTE790	1/10
403401	High Rejection LTE Filter (HR) "F" 47...790MHz VHF/UHF (Ch21-60) Indoor	LTE790	1/10
403302	Very High Rejection LTE Microcavities Filter (VHR) "F" 5...782MHz VHF/UHF (Ch21-59) Selective, Indoor	LTE790	1/14
403301	Very High Rejection LTE Microcavities Filter (VHR) "F" 5...790MHz VHF/UHF (Ch21-60) Selective, Indoor	LTE790	1/14
403304	Ultra High Rejection LTE Microcavities Filter (VHR) "F" 5...782MHz VHF/UHF (Ch21-59) Selective, Indoor	LTE790	1/10
4163	Outdoor Case Grey Large Model Dimensions: External 136x127x45mm Internal 125x97x35mm	G	1/5
"IEC" CONNECTOR			
★ 403210	High Rejection LTE Filter (HR) "IEC" 47...694MHz VHF/UHF (Ch21-48) Indoor	LTE700	1/10
404411	Medium Rejection LTE Filter (MR) "IEC" 470...774MHz UHF (Ch21-58) Indoor (Bag B3)	LTE790	10
404401	High Rejection LTE Filter (HR) "IEC" 47...782MHz VHF/UHF (Ch21-59) Indoor	LTE790	10/50
404412	High Rejection LTE Filter (HR) "IEC" 47...790MHz VHF/UHF (Ch21-60) Indoor (Bag B3)	LTE790	10
COMBINERS LTE790			
TERRESTRIAL			
404010	Mast Triplexer 3i/1o "EasyF": BI/FM-BIII/DAB-UHF[dc]		1/10
404110	Mast Triplexer 3i/1o "EasyF": VHF-UHF[dc]-UHF		1/10
TERRESTRIAL + 1 SATELLITE			
745210	Combiner MATV-SAT 2i/1o "F": 47..790-950..2400MHz[dc]		1/10
745220	Mini-Combiner MATV-SAT 2i/1o "F": 47..790-950..2400MHz[dc]		10
TERRESTRIAL + 2 SATELLITES			
740710	Double Combiner (47...790/950..2400MHz[dc]) 3i/2o "F": SAT1-MATV-SAT2 / SAT1+MATV-SAT2+MATV		1/10



▲ 404010



▲ 403220



▲ 403210

▲ Mini-mixer (745220)
(57 x 47 x 13 mm)

▲ 745210



▲ 740710

LTE FILTERS

Attenuate the LTE/4G or LTE/5G signals passing through the antenna towards active devices susceptible of being affected by them.

Plug-in model
("F" or "IEC" connection)Filter based on microcavities
Minimal insertion losses

**LTE ADAPTATION,
ALL SOLUTIONS FOR ALL CASES**

AMPLIFICATION

Ref.	Description		
MAST AMPLIFICATION			
NANOKOM SERIES			
561421	NanoKom Mast Amplifier 3i/1o "EasyF": UHF-UHF[dc]-SATmix[dc] G 30-30- (-1.5)dB Vo 108dBµV 12...24V Powering (Switchable DC Pass)	LTE700	1/10
561401	NanoKom Mast Amplifier 3i/1o "EasyF": UHF-UHF[dc]-SATmix[dc] G 30-30- (-2.5)dB Vo 107dBµV 12...24V Powering (Switchable DC Pass)	LTE790	1/10
561521	NanoKom Mast Amplifier 3i/1o "EasyF": BIII/UHF[dc]-FMmix-SATmix[dc] G 18/28- (-1.5) - (-2.5)dB Vo 106/108dBµV w/USOS 12...24V Powering (Switchable DC Pass)	LTE700	1/10
561501	NanoKom Mast Amplifier 3i/1o "EasyF": BIII/UHF[dc]-FMmix-SATmix[dc] G 20/29- (-2) - (-2)dB Vo 105/107dBµV w/USOS 12...24V Powering (Switchable DC Pass)	LTE790	1/10
561620	NanoKom Mast Amplifier 3i/1o "EasyF": UHF[dc]-VHFmix-SATmix[dc] G 30- (-1) - (-2)dB Vo 107dBµV w/USOS. 12...24V Powering (Automatic LTE Filter & Switchable DC Pass)	AUTO LTE	1/10
561621	NanoKom Mast Amplifier 3i/1o "EasyF": UHF[dc]-VHFmix-SATmix[dc] G 30- (-1) - (-2)dB Vo 107dBµV w/USOS 12...24V Powering (Switchable DC Pass)	LTE700	1/10
561601	NanoKom Mast Amplifier 3i/1o "EasyF": UHF[dc]-VHFmix-SATmix[dc] G 30- (-1) - (-2)dB Vo 107dBµV w/USOS 12...24V Powering (Switchable DC Pass)	LTE790	1/10
561721	NanoKom Mast Amplifier 3i/1o "EasyF": UHF[dc]-UHF-VHFmix G 30-30- (-1.5)dB Vo 108dBµV 12...24V Powering (Switchable DC Pass)	LTE700	1/10
561701	NanoKom Mast Amplifier 3i/1o "EasyF": UHF[dc]-UHF-VHFmix G 30-30- (-1.5)dB Vo 108dBµV 12...24V Powering (Switchable DC Pass)	LTE790	1/10
561821	NanoKom Mast Amplifier 3i/1o "EasyF": BIII-UHF[dc]-FMmix G 20-30- (-2)dB Vo 107dBµV w/USOS 12...24V Powering (Switchable DC Pass)	LTE700	1/10
561801	NanoKom Mast Amplifier 3i/1o "EasyF": BIII-UHF[dc]-FMmix G 21-29- (-2)dB Vo 107dBµV w/USOS 12...24V Powering (Switchable DC Pass)	LTE790	1/10
HIGH GAIN - HIGH OUTPUT LEVEL - 24V POWERING LTE790			
535640	Mast Amplifier 1i/1o "EasyF": FM/BIII/DAB/UHF[dc] G 15/31/31/41dB Vo 116dBµV 24V Pow. (Switchable DC Pass)		1/5
535740	Mast Amplifier 3i/1o "EasyF": FM-BIII/DAB-UHF[dc] G 15-32/32-42dB Vo 116dBµV 24V Pow. (Switchable DC Pass)		1/5
★ 535340	Mast Amplifier 3i/1o: UHF[ch][dc]-UHF[dc]-Vmix G 35-32- (-1.5)dB Vo 117dBµV 12...24V Pow.		1/5
535840	Mast Amplifier 4i/1o "EasyF": FM-BIII/DAB-UHF-UHF[dc] G 15-32/32-41-41dB Vo 116dBµV 24V Pow. (Switchable DC Pass)		1/5
LOW GAIN - HIGH OUTPUT LEVEL - 12V POWERING LTE790			
536040	Mast Amplifier 2i/1o "EasyF": BIII/DAB[dc]-UHF[dc] G 26/26/26-26dB Vo 114 dBµV 12V Pow. (Switchable DC Pass)		1/5
536041	Mast Amplifier 3i/1o "EasyF": BIII/DAB-UHF-UHF[dc] G 26/26-26-26dB Vo 114 dBµV 12V Pow. (Switchable DC Pass)		1/5
SAT-MIX SERIES: VARIABLE GAIN - LOW OUTPUT LEVEL - 12...24V POWERING			
5354	Mast Amplifier 2i/4o "EasyF": UHF/Vmix[dc]-SATmix[dc] G 20/(-9) - (-12)dB Vo 93dBµV 12...24V Pow.		1/5
DOMESTIC POWER SUPPLY UNITS: PICOKOM SERIES			
5795	PicoKom Domestic Power Supply Unit 1i/2o "EasyF": 5...862MHz 24V-130mA		1/10
5796	PicoKom Domestic Power Supply Unit 1i/1o "EasyF" SATmix: 5...2500MHz 12V-220mA		1/10
DOMESTIC POWER SUPPLY UNITS			
5504	Domestic Power Supply Unit 1i/2o "F" 5...862MHz 24V-130mA		1
550101	Domestic Power Supply Unit 1i/2o "F" 5...862MHz 12V-220mA		1
★ 550104	Domestic Power Supply Unit 1i/2o "F": 5...862MHz 12V-220mA (110Vac & UL Listed)		1
5501	Domestic Power Supply Unit 1i/2o "F" 5...862MHz 12V-220mA (UK Plug)		1
KITS: MAST AMPLIFIER + PSU LTE790			
568002	NanoKom Mast Amplifier 3i/1o "EasyF": UHF[dc]-UHF-VHFmix + PicoKom PSU 1i/2o "EasyF" 24V-130mA. Kit with Refs. 561701 & 5795	⊙	1
567802	NanoKom Mast Amplifier 3i/1o "EasyF": UHF[dc]-VHFmix-SATmix[dc] with USOS + PicoKom PSU 1i/1o "EasyF" 12V-220mA. Kit with Refs.: 561601 & 5796	⊙	1
★ 560121	Mast Amplifier 3i/1o "F": FM-BIII/DAB-UHF G 18G 13-17-28dB Vo 108dBµV w/BOSS-Tech. 12...24V Powering		1/5

MAST NANOKOM SERIES



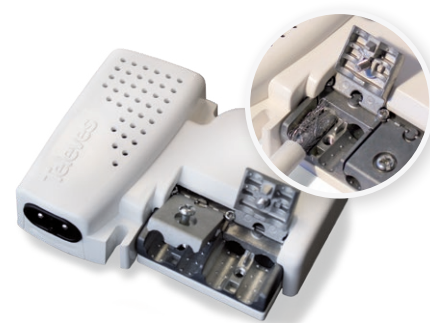
Dimensions: 90 x 80 x 38mm

The ultra-small size series with very low noise figure and automatic output level adjusting (USOS System).



▲ 561620 (with AUTO-LTE filter)

The amplifier is able to automatically switch the LTE filter on to filter channels from 48 (LTE700) to 60 (LTE790) depending on the scenario.



▲ Domestic PSU: PicoKom series (90 x 68 x 28 mm)



▲ Domestic PSU: F connector (145 x 35 x 45 mm)

Ref.	Description		
MATV DOMESTIC AMPLIFIERS (47...694/790/862MHz)			
"EasyF" CONNECTOR: PICOKOM SERIES			
560541	PicoKom Domestic Amplifier 1i/1o "EasyF": 47...790MHz G 14/20dB Vo 102/106dBµV Auto-Adjustment + Preamp.Pow. 12V-150mA	LTE790	1/10
560542	PicoKom Domestic Amplifier 1i/2o "EasyF": 47...790MHz G 10/16dB Vo 98/102dBµV Auto-Adjustment + Preamp.Pow. 12V-150mA	LTE790	1/10
560543	PicoKom Domestic Amplifier 1i/(2o+TV) "EasyF": 47...790MHz G 10/16dB Vo 98/102dBµV Auto-Adjustment + Preamp.Pow. 12V-150mA	LTE790	1/10
5605	PicoKom Domestic Amplifier 1i/2o "EasyF": 47...862MHz G 10/20dB Vo 105dBµV Auto-Adjustment + Preamp.Pow. 12V-150mA		1/10
"IEC" CONNECTOR			
552740	Domestic Amplifier 1i/1o "IEC": 47...790MHz G 25dB Vo 112dBµV (Blister T1)	LTE790	8
552741	Domestic Amplifier 1i/1o "IEC": 47...790MHz G 25dB Vo 112dBµV (UK plug)	LTE790	5
552120	Domestic Amplifier 1i/2o "IEC": 47...694MHz G 22dB Vo 104dBµV (Blister T1)	LTE700	8
552840	Domestic Amplifier 1i/(2o+TV) "IEC": 47...790MHz G 20dB Vo 106dBµV + Output TV Outlet G 12dB (Blister T1)	LTE790	8
545720	Domestic Amplifier 1i/(2o+TV) "IEC": 47...694MHz G 20dB Vs 110dBµV + Output TV Outlet G 12dB + Preamp.Pow. 12V-100mA (Blister T1)	LTE700	8
552940	Domestic Amplifier 1i/(4o+TV) "IEC": 47...790MHz G 16dB Vo 102dBµV + Output to a TV Outlet G 11dB (Blister T1)	LTE790	8
"F" CONNECTOR			
552220	Domestic Amplifier 1i/(2o+TV) "F": 47...694MHz G 20dB Vo 110dBµV + Output TV Outlet G 12dB (Blister T1)	LTE700	1
552240	Domestic Amplifier 1i/(2o+TV) "F": 47...790MHz G 20dB Vo 106dBµV + Output to a TV Outlet G 12dB (Blister T1)	LTE790	8
5523	Domestic Amplifier 1i/(4o+TV) "F": 47...862MHz G 16dB Vo 102dBµV + Output to a TV Outlet G 11dB (Blister T1)		8
★ 552320	Domestic Amplifier 1i/(4o+TV) "F": 47...694MHz G 16dB Vo 102dBµV + Output to a TV Outlet G 11dB (Blister T1)	LTE700	8
552340	Domestic Amplifier 1i/(4o+TV) "F": 47...790MHz G 16dB Vo 102dBµV + Output to a TV Outlet G 11dB (Blister T1)	LTE790	8
5531	Domestic Amplifier 1i/6o "F": 47...862MHz G 16dB Vo 103dBµV (Blister T1)		8
545801	Auto-LTE Domestic Amplifier 1i/(2o+TV) "F": 47...694/782MHz G 20dB Vo 101dBµV Auto-Adjustment + Output to a TV Outlet G 11dB + Preamp.Powering 12V-100mA (Blister T1)	AUTO LTE	8
★ 545802	Auto-LTE Domestic Amplifier 1i/(2o+TV) "F": 47...694/790MHz G 20dB Vo 101dBµV Auto-Adjustment + Output to a TV Outlet G 11dB + Preamp.Powering 12V-100mA, UK plug (Blister T1)	AUTO LTE	8
545901	Auto-LTE Domestic Amplifier 1i/(2o+TV) "F": 47...694/782MHz G 20dB Vo 101dBµV w/USOS + Output to a TV Outlet G 11dB + Preamp.Powering 12V-100mA	AUTO LTE	1
SMATV DOMESTIC AMPLIFIERS (47...2150MHz)			
"EasyF" CONNECTOR: PICOKOM SERIES			
560601	PicoKom Domestic Amplif. 1i/2o "EasyF": 47..862/950..2150MHz G 15/23dB Vo 97/106dBµV AGC +Preamp.Powering 12V-160mA		1/10
"F" CONNECTOR			
5530	Domestic Amplifier 1i/(2o+TV) "F": 5..30/47..862/950..2150MHz G(-9)/18/20dB Vo 105/110dBµV +Output TV Outlet G(-16)/10/12dB (Blister T1)		8
CATV DOMESTIC AMPLIFIERS (5...862MHz)			
"F" CONNECTOR			
5520	Domestic Amplifier 1i/(2o+TV) "F": 5..65/87.5..862MHz G -7/20dB Vo107dBµV +Output TV Outlet G13dB (Passive Return)		8
5525	Domestic Amplifier 1i/(2o+TV) "F": 5..65/87.5..862MHz G -7/18dB Vo106dBµV + Output TV Outlet G 12dB (Passive Ret.+ Equaliser)		8
5526	Domestic Amplifier 1i/(2o+TV) "F": 5..65/87.5..862MHz G 9/20dB Vo 107dBµV +Output TV Outlet G13dB (Active Return)		8
553301	Domestic Amplifier 1i/1o "F": 5..30/47..862MHz G -2/24dB Vo 112dBµV (Passive Ret.+ Equaliser)		8
553501	Domestic Amplifier 1i/1o "F": 5..30/47..862MHz G -2/34dB Vo 112dBµV (Passive Ret.+ Equaliser)		8

AUTO-LTE FILTERING

The amplifier is able to automatically switch the LTE filter on to filter channels from 48 (LTE700) to 60 (LTE790) depending on the scenario.



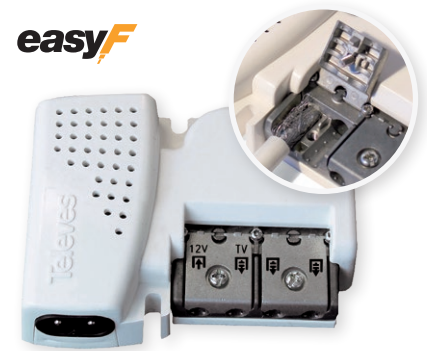
Ref. 545801

Plug and Play due to its automatic gain control (AGC)

Ref. 545901

Equipped with USOS (User Selectable Output Signal) technology: the installer selects the desired output level, which remains stable. The device automatically adjusts gain according to the input signal variation.

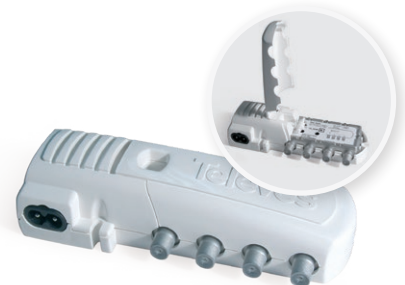
easyF



▲ Domestic Amplifier: PicoKom Series (90 x 68 x 28 mm)



▲ Domestic Amplifier: "IEC" Connector (145 x 35 x 45 mm)



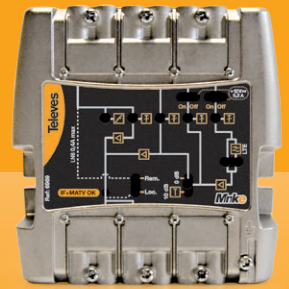
▲ Domestic Amplifier: "F" Connector (145 x 35 x 45 mm)

(1) Variable gain in UHF and VHF with detachable main lead.

AMPLIFICATION

Ref.	Description	
LAUNCH AMPLIFIERS: MINIKOM "EasyF" SERIES		LTE790
TERRESTRIAL - MATV		
562501	MiniKom Amplifier MATV 3i/1o "EasyF": FM-VHF-UHF G 15-[22 32]-[30 40]dB Vo 113-114-117dB μ V Preamplif.Powering 12V-200mA (Switchable DC Pass)	1
562401	MiniKom Amplifier MATV 4i/1o "EasyF": FM-VHF-UHF-UHF G 15-[22 32]-[26 36]-[24 34]dB Vo 113-114-117-117dB μ V Preamplif.Powering 12V-200mA (Switchable DC Pass)	1
562301	MiniKom Amplifier 5i/1o "EasyF": FM-V-U-21..35-39..60 G 15-[22 32]-[26 36]-[24 34]-[24 34]dB Vo113-114-117-117dB μ V Preamplif. Powering 12V-200mA (Switchable DC Pass)	1
562302	MiniKom Amplifier 5i/1o "EasyF": FM-V-U-21..32-36..60 G 15-[22 32]-[26 36]-[24 34]-[24 34]dB Vo113-114-117-117dB μ V Preamplif. Powering 12V-200mA (Switchable DC Pass)	1
TERRESTRIAL + SATELLITE - SMATV		
562601	MiniKom Amplifier MATV+SAT 4i/1o "EasyF": FM-VHF-UHF-SAT G 15-[21 31]-[27 37]-35dB Vo 114-114-115-119dB μ V Preamplif.Powering 12V-200mA (Switchable DC Pass)	1
562201	MiniKom Amplifier MATV+SAT 5i/1o "EasyF": FM-VHF-UHF-UHF-SAT G 15-[21 31]-[24 34]-[24 34]-35dB Vo 114-114-115-115-119dB μ V Preamplif.Powering 12V-200mA (Switchable DC Pass)	1
LAUNCH AMPLIFIERS: MINIKOM "F" SERIES		
TERRESTRIAL - MATV: LINE		
537302	MiniKom Amplifier MATV 1i/1o "F": 47...454/470...862MHz G [20 30]/[27 37]dB Vo 114/116dB μ V	1
TERRESTRIAL - MATV		
539201	MiniKom Amplifier MATV 4i/1o "F": FM-BIII/DAB-UHF-UHF G 15-[20 30]-[27 37]-[27 37]dB Vo 114-114-117-117dB μ V 12V-70mA Preamp.Pow.	1
RETURN PATH + TERRESTRIAL + SATELLITE - SMATV/CATV: LINE		
531710	MiniKom Amplifier Return Path + MATV + SAT 1i/1o "F": 5..30/47..862/950..2150MHz G -5/30/33..38dB Vo (MATV/SAT) 114/123dB μ V	1
RETURN PATH + TERRESTRIAL + SATELLITE - SMATV/CATV		
5317	MiniKom Amplifier Return Path + MATV + 2SAT 2i/2o "F": [5..30/47..862/950..2150]-[950..2150]MHz G (for 2 outputs) -5/30/33..38dB Vo (MATV/SAT) 114/123dB μ V	1
TERRESTRIAL + SATELLITE - SMATV		
★ 539620	MiniKom Amplifier MATV + SAT 4i/1o "F": FM-BIII-UHF-FI G 17-35-39-35..41dB Vo 110-113-114-124dB μ V 12V-70mA Preamplif.Pow.	1
5363	MiniKom Amplifier MATV + SAT 2i/1o "F": [47...862]-[950...2150]MHz G -1.5-35..45dB Vo(SAT) 124dB μ V	1
536310	MiniKom Amplifier MATV + SAT 2i/1o "F": [47...862]-[950...2150]MHz G -1.5-35..45dB Vo(SAT) 124dB μ V (110Vac & US Plug)	1
SKY PASS - TERRESTRIAL - MATV		
5372	MiniKom Amplifier Return Path + MATV 2i/(7+1)o "F": FM/VHF-5..7MHz/UHF G 5-0.5/15dB Vo 89-108/89dB μ V (+1@16-15/27dB) 12V 30/10mA Preamplif./IR Powering (UK Plug)	1

MINIKOM EasyF SERIES



▲ Amplifiers

(Dimensions: 100 x 100 x 50 mm)

High efficiency launch / splitband amplifiers, with selectable gain and LTE rejection.

en.televes.com/minikom



▲ Domestic Amplifier: "F" Connectors
(145 x 35 x 45 mm)

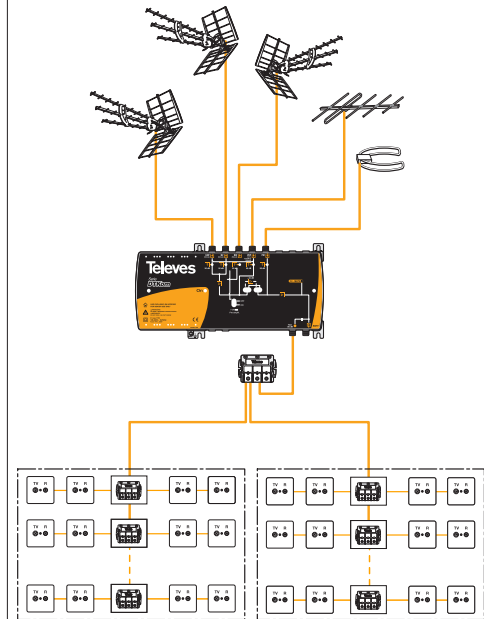


▲ Amplifiers: MiniKom "F" Series
(185 x 112 x 70 mm)

Ref.	Description		
LAUNCH AMPLIFIERS: DTKOM SERIES			
TERRESTRIAL - MATV: LINE			
5338	DTKom Amplifier MATV 1i/1o "F": 47...862MHz G (41 53)dB Vo 123dB μ V (Remote Powering)		1
TERRESTRIAL - MATV			
534040	DTKom Amplifier MATV 3i/1o "F": FM-BIII-UHF G (21 25)-(36 44)-(45 55)dB Vo 123dB μ V 12V-50mA Preamplif. Powering	LTE790	1
5341	DTKom Amplifier MATV 5i/1o "F": BI/FM-BIII-21..36-38..69-UHF G (31 39)/(21 25)-(36 44)-(39 48)-(40 50)-(40 50)dB Vo 123dB μ V 12V-50mA Preamplif. Powering		1
534140	DTKom Amplifier MATV 5i/1o "F": FM-BIII-21..35-38..60-UHF G (21 25)-(36 44)-(40 50)-(42 52)-(42 52)dB Vo 123dB μ V 12V-50mA Preamplif. Powering	LTE790	1
534141	DTKom Amplifier MATV 5i/1o "F": FM-BIII-21..32-36..60-UHF G (21 25)-(36 44)-(40 50)-(42 52)-(42 52)dB Vo 123dB μ V 12V-50mA Preamplif. Powering	LTE790	1
RETURN PATH + TERRESTRIAL + SATELLITE - SMATV/CATV: LINE			
533501	DTKom Amplifier Return Path + MATV + SAT 1i/1o "F": 5..65/87..862/950...2150MHz G 20/(40 53)/42dB Vo 115/124/121dB μ V		1
5337	DTKom Amplifier Return Path + MATV + 2SAT 2i/2o "F": (5..30/47..862/950..2150MHz) - (950..2150MHz) G (for 2 outputs) (-5 28)/(30 40)/40dB Vo 115/120/120dB μ V		1
RETURN PATH + TERRESTRIAL - CATV: LINE			
★ 451280	DTKom Amplifier Return Path + MATV 1i/1o "F": 5...42/54...1002MHz G 28/(30 40)dB Vo 118/129dB μ V		1
451203	DTKom Amplifier Return Path + MATV 1i/1o "F": 5...65/87...1006MHz G 28/(30 40)dB Vo 118/129dB μ V		1
AMPLIFIERS: MICROKOM SERIES			
FIXED RETURN PATH AMPLIFIERS			
534211	MicroKom Amplifier Return Path + MATV 1i/1o "F": 5...65/85...1006MHz G (- 20)/(20 25)dB Vo 118/121 dB μ V		1
534411	MicroKom Amplifier Return Path + MATV 1i/1o "F": 5...65/85...1006MHz G (- 20)/(28 35)dB Vo 118/121 dB μ V		1
★ 534281	Outdoor Amplifier MicroKom Return Path + MATV 1i/1o "F": 5...42/54...1006MHz G (0 20)/(20 25)dB Vo 121dB μ V (US Plug)		1
★ 534481	Outdoor Amplifier MicroKom Return Path + MATV 1i/1o "F": 5...42/54...1006MHz G (0 28)/(30 35)dB Vo 121dB μ V (US Plug)		1



▲ Amplifiers: DTKom Series (284 x 140 x 50 mm)



▲ Amplifiers: MicroKom Series (190 x 88 x 35 mm)



▲ Amplifiers: Outdoor Series (290 x 220 x 100 mm)

AMPLIFICATION

Ref.	Description	
PROGRAMMABLE AMPLIFICATION: AVANT SERIES		
AVANT X ⁽¹⁾		AUTO LTE
532101	Avant X Basic with Auto-LTE: Programmable Amplifier with Digital Processing/Filtering (32 Filters) 5i/1o "F": FM-4xVHF/UHF G 29-75dB Vo 122-122dBμV (DVB-T/T2 Compatible)	1
532111	Avant X Basic-Sat with Auto-LTE: Programmable Amplifier with Digital Processing/Filtering (32 Filters) 6i/2o "F": FM-4xVHF/UHF-SAT G 25-71-41dB Vo 118-118-123dBμV (DVB-T/T2 Compatible)	1
532121	Avant X Pro with Auto-LTE: Programmable Amplifier with Digital Processing/Filtering (32 Filters) 5i/1o "F": FM-4xVHF/UHF G 29-75dB Vo 122-122dBμV (DVB-T/T2 Compatible) With Autoprogramming, Monitoring and Report Generation	1
532131	Avant X Pro-Sat with Auto-LTE: Programmable Amplifier with Digital Processing/Filtering (32 Filters) 6i/2o "F": FM-4xVHF/UHF-SAT G 25-71-41dB Vo 118-118-123dBμV (DVB-T/T2 Compatible) With Autoprogramming, Monitoring and Report Generation	1
532181	Avant X: Programmable Amplifier with Digital Processing/Filtering (32 Filters) 6i/1o "F": FM-4xVHFLow/VHFHigh/UHF G 21-75-45dB Vs 105-115-115dBμV (ISDBTb/ATSC/DVB-T2 Compatible)	
AVANT 6		AUTO LTE
★ 532601	Avant 6 with Auto-LTE: Programmable Amplifier with Digital Processing/Filtering (20 Filters) 3i/1o "F": FM-2xVHF/UHF G 19-55dB Vo 114-114dBμV (DVB-T/T2 Compatible)	1
ACCESSORIES		
★ 216810	OTG USB C-microUSB B Cable Male-Male 1m Black (Bag B2)	1
7234	Universal Programmer T.OX/T05/AVANT	1
5750	Cabinet for Headend Amplifier 440x440x140mm	1
4947	Coaxial Atmospheric Surge Arrestor 90V 0...3GHz	1/20
4061	Terminal Load "F" 75Ohm with DC Blocked	10/200
★ 494710	Kit: 4xSurge Arrestor and Earth bar, 9x"F" Female	1
★ 494711	Kit: 11xSurge Arrestor and Earth bar, 11x"F" Female	1
★ 994903	Avant X Power Supply Unit 12V-1,5A	1
★ 745210	Combiner MATV-SAT 2i/1o "F": 47..790-950..2400MHz[dc]	1/10
★ 745220	Mini-Combiner MATV-SAT 2i/1o "F": 47..790-950..2400MHz[dc]	1/10
★ 740710	Double Combiner [47...790/950...2400MHz[dc]] 3i/2o "F": SAT1-MATV-SAT2 / SAT1+MATV-SAT2+MATV	1/10

≡ CHOSE THE PROGRAMMING MODE YOU WISH....



A SIMPLE AND INTUITIVE APPLICATION FOR ANDROID AND PC
USB connection (OTG cable)



INTELLIGENT AUTOMATIC PROGRAMMING
WITH ONLY A BUTTON
(Only in PRO versions)



WITH OUR CLASSIC UNIVERSAL PROGRAMMER
(Ref.7234 not included)

(1) OTG cable for an ASuite programming included in all the AVANT X versions.



▲ Avant 6

AVANT X PROGRAMMABLE HEADEND AMPLIFIER DIGITAL FILTERING AND PROCESSING

A NEW EVOLUTIVE STAGE

DIGITAL PROCESSING TECHNOLOGY IMPLEMENTED ON TERRESTRIAL TV SIGNALS



Setting the internal filters according to the type of signal LTE (4G/5G)



Compatible with **DVB-T** **DVB-T2** **ATSC** **ISDB-T** **ISDB-Tb**

FORCE TECHNOLOGY Terrestrial signal level always stable and adapted to its optimum value

Ref.	Description	
T12 SERIES		
SINGLE CHANNEL AMPLIFICATION		
508212	T12 Single Channel Amplifier FM 88..108MHz G 35dB Vo 114dB μ V	1
508312	T12 Single Channel Amplifier BIII 174...230MHz G 45dB Vo 123dB μ V	1
509912	T12 Single Channel Amplifier DAB 195..232MHz G45dB Vo114dB μ V	1
508612	T12 Single/Multi Channel Amplifier UHF DTT 470...862MHz G 50dB Vo 125dB μ V (Up to 5 Channels)	LTE700 / LTE790 1
509812	T12 Single Channel Amplifier High Selectivity UHF 470...862MHz G 55dB Vo 125dB μ V	LTE700 / LTE790 1
508012	T12 Amplifier SAT 950...2150MHz G 35...50dB Vo 124dB μ V	1
POWER SUPPLY UNITS		
549812	T12 Switch-mode Power Supply Unit 60W 24V-2.5A	1
SUPPORTS & ENCLOSURES		
5071	Wall Mount 498mm (1 PSU + 7 T.OX Modules or 10 T12/T05 Modules) ⁽¹⁾	1
5239	Wall Mount 560mm (1 PSU + 8 T.OX Modules or 12 T12/T05 Modules) ⁽¹⁾	1
5301	19" Rack Frame 484mm 5RU (1 PSU + 7 T.OX Modules or 10 T12/T05 Modules) ⁽¹⁾	1
5072	Lockable Cabinet 498mm (1 PSU + 10 Modules T12/T05) ⁽¹⁾	1
5069	Lockable Cabinet 648mm (1 PSU + 14 T12/T05 Modules) ⁽¹⁾	1
5333	19" Rack Cabinet 15RU. Ventilation, Wheels, Glazed Door	1
507204	Lockable Cabinet with Forced Ventilation 327mm (1 PSU + 4 T.OX Modules)	1
ACCESSORIES		
5165	Adjustable Attenuator "IEC" 0 to 20dB 40..860MHz DC Pass	10
4005	Adjustable Attenuator "F" 0 to 20dB 5...2200MHz DC Pass	1/10
507312	T12/T05 Blank Plate 35mm - 5RU	1
5074	T12 "F" Connector Link Push Fit Type, 48mm	10
4061	Terminal Load "F" 75 Ω hm with DC Blocked	10/200
4071	DC Blocker "F"	10
4947	Coaxial Atmospheric Surge Arrestor 90V 0...3GHz	1/20
★ 745210	Combiner MATV-SAT 2i/1o "F": 47..790-950..2400MHz[dc]	1/10
★ 745220	Mini-Combiner MATV-SAT 2i/1o "F": 47..790-950..2400MHz[dc]	1/10
★ 740710	Double Combiner (47...790/950...2400MHz[dc]) 3i/2o "F": SAT1-MATV-SAT2 / SAT1+MATV-SAT2+MATV	1/10



▲ 509812

▲ 549812



▲ 5301

▲ 549812



▲ 5072



▲ 5069



▲ 4162



▲ 4071

(1) The number of modules indicated is based solely on the available space; but the number of installable modules may be limited by other restrictions as consumption or temperature.

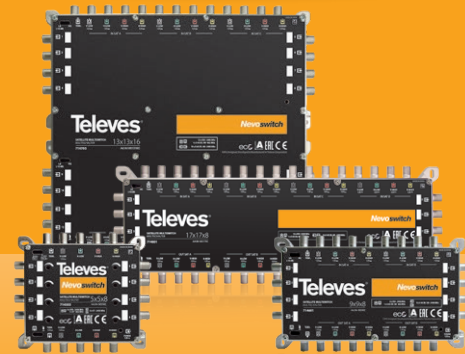
MULTISWITCHES

Ref.	Description	
NEVOSWITCH SERIES: STAND ALONE & CASCADE MULTISWITCHES		
5 INPUTS (1 SATELLITE + TERRESTRIAL)		
714501	Multiswitch 5x5x4 "F" Terminal/Cascade	1
714502	Multiswitch 5x5x6 "F" Terminal/Cascade	1
714503	Multiswitch 5x5x8 "F" Terminal/Cascade	1
714504	Multiswitch 5x5x12 "F" Terminal/Cascade	1
714505	Multiswitch 5x5x16 "F" Terminal/Cascade	1
714506	Multiswitch 5x5x24 "F" Terminal/Cascade	1
714507	Multiswitch 5x5x32 "F" Terminal/Cascade	1
714508	Amplifier 5x5 "F" MATV/IF G 12/15dB Vo 110dB μ V	1
714509	Amplifier 5x5 "F" MATV/IF G 27/25dB Vo 110dB μ V	1
714906	Tap 5x5x5 "F" 8dB	1
714901	Tap 5x5x5 "F" 12dB	1
714902	Tap 5x5x5 "F" 15dB	1
714903	Tap 5x5x5 "F" 20dB	1
714904	Tap 5x5x5 "F" 25dB	1
714905	Splitter 5x5x5 4/4dB	1
5 INPUTS (1 SATELLITE + TERRESTRIAL) - QUAD COMPATIBLE		
714402	Quad Compatible Multiswitch 5x5x6 "F" Terminal/Cascade (12V-0.8A PSU included)	1
714403	Quad Compatible Multiswitch 5x5x8 "F" Terminal/Cascade (12V-0.8A PSU included)	1
714404	Quad Compatible Multiswitch 5x5x12 "F" Terminal/Cascade (12V-0.8A PSU included)	1
714405	Quad Compatible Multiswitch 5x5x16 "F" Terminal/Cascade (12V-0.8A PSU included)	1
5 INPUTS (1 SATELLITE + PASSIVE TERRESTRIAL)		
714303	Multiswitch 5x5x8 "F" Terminal/Cascade, Passive Terrestrial	10
714304	Multiswitch 5x5x12 "F" Terminal/Cascade, Passive Terrestrial	1
714305	Multiswitch 5x5x16 "F" Terminal/Cascade, Passive Terrestrial	1
5 INPUTS (1 SATELLITE + TERRESTRIAL) - dCSS TECHNOLOGY, MULTICHOICE COMPATIBLE		
714121	dCSS Multiswitch 5x5x2 "F" Terminal/Cascade, Switchable Adjustable/Passive Terrestrial	1
714122	dCSS Multiswitch 5x5x4 "F" Terminal/Cascade, Switchable Adjustable/Passive Terrestrial	1
9 INPUTS (2 SATELLITES + TERRESTRIAL)		
714601	Multiswitch 9x9x8 "F" Terminal/Cascade	1
714602	Multiswitch 9x9x12 "F" Terminal/Cascade	1
714603	Multiswitch 9x9x16 "F" Terminal/Cascade	1
714604	Multiswitch 9x9x24 "F" Terminal/Cascade	1
714605	Multiswitch 9x9x32 "F" Terminal/Cascade	1
714609	Amplifier 9x9 "F" Ret.P/MATV/IF G -/27/25dB Vo 110dB μ V	1
9 INPUTS (2 SATELLITES + TERRESTRIAL) - QUAD COMPATIBLE		
714241	Quad Compatible Multiswitch 9x9x8 "F" Terminal/Cascade	1
714242	Quad Compatible Multiswitch 9x9x12 "F" Terminal/Cascade	1
714243	Quad Compatible Multiswitch 9x9x16 "F" Terminal/Cascade	1
714244	Quad Compatible Multiswitch 9x9x24 "F" Terminal/Cascade	1
714245	Quad Compatible Multiswitch 9x9x32 "F" Terminal/Cascade	1



▲ 714241

NEVOSWITCH SERIES



Scalable multiswitches range, european design, manufacturing and quality.

en.televés.com/nevoswitch

THE NEW AND INNOVATIVE NEVOSWITCH IMPLEMENTING **dCSS TECHNOLOGY**, WITH **DCFLEX FUNCTIONALITY**



DCFLEX gives complete flexibility when choosing how to power the dCSS NevoSwitch to suit any installation scenario. This versatility is achieved by a toggle switch that can isolate the multiswitch from the cascade's DC power configuration.

en.televés.com/dcssnevoswitch



▲ 714602

Ref.	Description	
------	-------------	--

NEVOSWITCH SERIES: STAND ALONE & CASCADE MULTISWITCHES

13 INPUTS (3 SATELLITES + TERRESTRIAL)

714701	Multiswitch 13x13x8 "F" Terminal/Cascade	1
714702	Multiswitch 13x13x12 "F" Terminal/Cascade	1
714703	Multiswitch 13x13x16 "F" Terminal/Cascade	1
714704	Multiswitch 13x13x24 "F" Terminal/Cascade	1
714705	Multiswitch 13x13x32 "F" Terminal/Cascade	1
714709	Amplifier 13x13 "F" Ret.P/MATV/IF G -/27/25dB Vo 110dBµV	1

17 INPUTS (4 SATELLITES + TERRESTRIAL)

714801	Multiswitch 17x17x8 "F" Terminal/Cascade	1
714802	Multiswitch 17x17x12 "F" Terminal/Cascade	1
714803	Multiswitch 17x17x16 "F" Terminal/Cascade	1
714804	Multiswitch 17x17x24 "F" Terminal/Cascade	1
714805	Multiswitch 17x17x32 "F" Terminal/Cascade	1
714809	Amplifier 17x17 "F" Ret.P/MATV/IF G -/27/25dB Vo 110dBµV	1

POWER SUPPLY UNITS

732101	Power Supply Unit 12V-0.8A	1
732210	Power Supply Unit 12V-1.5A (UK plug)	1
732802	Power Supply Unit 12.5V-2.8A	1
732001	Power Supply Unit 18V-2A (NevoSwitch dCSS)	1
★ 732010	Power Supply Unit 18V-2A (dCSS NevoSwitch, UK plug)	1

ACCESSORIES

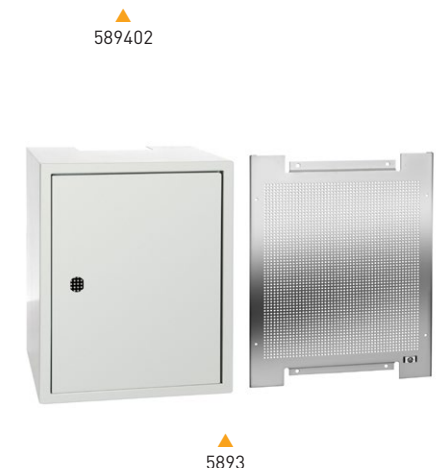
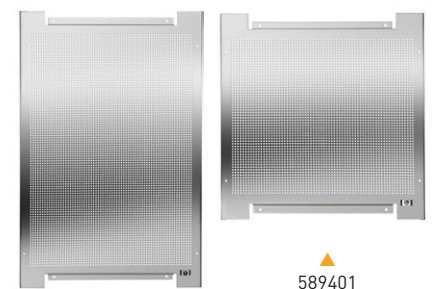
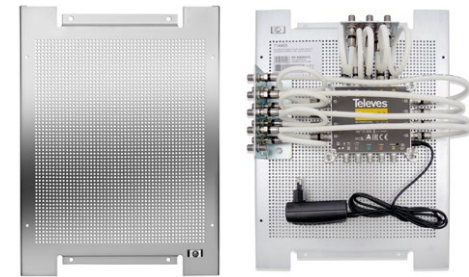
993810	Earth Bonding Bar 4 Connectors (9x/13x/17x NevoSwitch compatible)	1
993811	Earth Bonding Bar 5 Connectors (5x/9x/13x/17x NevoSwitch compatible)	1
3821	Adapter "Quick F" Male - "F" Male, Plastic Box	50/500
★ 732150	DC Cable "F"-"Jack" Female 0,4m	1
★ 4174	Set of 5 Colour Coded Leads "Quick F" 260mm	1/50

EASYSWITCH SERIES

719001	Multiswitch 5x5x4 "EasyF" Terminal/Cascade (Adjustable Attenuator)	1
719101	Amplifier 5x5 "EasyF" MATV/SAT G 14/28dB Vo 111/110dBµV w/AGC	1

CABINETS

5894	Perforated Mounting Plate 300x400mm, Distance from the wall 19mm	1
589401	Perforated Mounting Plate 400x400mm, Distance from the wall 19mm	1
589402	Perforated Mounting Plate 400x600mm, Distance from the wall 19mm	1
5893	Indoor Lockable Cabinet with Mounting Plate, Dimensions: 300x400x200mm	1
589301	Indoor Lockable Cabinet with Mounting Plate, Dimensions: 400x400x200mm	1
589302	Indoor Lockable Cabinet with Mounting Plate, Dimensions: 400x600x200mm	1
589303	Indoor Lockable Cabinet with Mounting Plate, Dimensions: 600x600x200mm	1
589304	Indoor Lockable Cabinet with Mounting Plate, Dimensions: 600x800x200mm	1
5749	Outdoor Lockable Cabinet (IP66 Standard), Dimensions: 600x380x210mm	1



Ref.	Description		
SPLITTERS WITH "EasyF" CONNECTOR			
5...2400MHz			
543503	Mini-Splitter 5...2400MHz "EasyF" 2W 4.3/4dB Indoor DC Pass 0-I		10
543603	Mini-Splitter 5...2400MHz "EasyF" 3W 8.5/7.5dB Indoor DC Pass 0-I		10
543702	Splitter 5...2400MHz "EasyF" 4W 9/7.5dB Indoor DC Pass 0-I		10
543802	Splitter 5...2400MHz "EasyF" 5W 10/9.5dB Indoor DC Pass 0-I		10
5469	Splitter 5...2400MHz "EasyF" 6W 11/14dB Indoor DC Pass 0-I		6
5489	Splitter 5...2400MHz "EasyF" 8W 14/16dB Indoor DC Pass 0-I		6
434103	Mini-Splitter 5...2400MHz "EasyF" 2W 4.3/4dB DC Pass 0-I With Outdoor Mounting Case (Blister T1)	B	10
434202	Splitter 5...2400MHz "EasyF" 4W 9/7dB DC Pass 0-I With Outdoor Mounting Case (Blister T1)	B	8
★ 542903	Mini-Splitter 5...2400MHz "EasyF" 2W 4.5/4.3dB Indoor DC Pass 0-I + UAP		10
★ 543902	Splitter 5...2400MHz "EasyF" 3W 9/8dB Indoor DC Pass 0-I + UAP		10
★ 544902	Splitter 5...2400MHz "EasyF" 4W 9/7.5dB Indoor DC Pass 0-I + UAP		10
★ 5454	Splitter 5...2400MHz "EasyF" 5W 11/13dB Indoor + UAP		10
★ 5430	Splitter 5...2400MHz "EasyF" 6W 14/14dB Indoor + UAP		10
★ 5433	Splitter 5...2400MHz "EasyF" 8W 14/16dB Indoor + UAP		10
ACCESSORIES			
545510	Face Plate for Mini Series White 62x56x18mm	W	10
417801	Outdoor Case Black Model for Mini Series Dimensions: External 88x78x39mm Internal 57x47x13mm	B	1/10
545501	Face Plate White 93x74x21mm	W	10
4177	Outdoor Case Black Small Model Dimensions: External 113x88x35mm Internal 92x66x27mm	B	1/5
4163	Outdoor Case Grey Large Model Dimensions: External 136x127x45mm Internal 125x97x35mm	G	1/5
4087	Terminal Load "EasyF" 750hm with DC Blocked		25
408701	Terminal Load "EasyF" 750hm with DC Blocked, Plastic Box		100
SPLITTERS WITH "F" CONNECTOR			
5...2400MHz			
5150	Splitter 5...2400MHz "F" 2W 4/5dB Indoor		1/10
5151	Splitter 5...2400MHz "F" 3W 7/9dB Indoor		1/10
5152	Splitter 5...2400MHz "F" 4W 8/10dB Indoor		1/10
5153	Splitter 5...2400MHz "F" 5W 10/12dB Indoor		1/10
7441	Splitter 5...2400MHz "F" 6W 11/14dB Indoor		1/10
7406	Splitter 5...2400MHz "F" 8W 12/15dB Indoor		1/10
★ 5154	Splitter 5...2400MHz "F" 4W 8/10dB Indoor + UAP		1/10
★ 5160	Splitter 5...2400MHz "F" 5W 10/12dB Indoor + UAP		1/10
★ 5161	Splitter 5...2400MHz "F" 7W 12/15dB Indoor + UAP		1/10
5155	Splitter 5...2400MHz "F" 2W 4/5dB Indoor DC Pass All		1/10
5156	Splitter 5...2400MHz "F" 4W 7.5/10dB Indoor DC Pass All		1/10
5157	Splitter 5...2400MHz "F" 5W 10/12dB Indoor DC Pass All		1/10
5158	Splitter 5...2400MHz "F" 6W 10/12dB Indoor DC Pass All		1/10
5159	Splitter 5...2400MHz "F" 8W 11/14dB Indoor DC Pass All		1/10
7402	Splitter 950...2150MHz "F" 8W 1...4dB Indoor Active		1
5...1220MHz - DOCSIS 3.1			
453003	Splitter 5...1220MHz "F" 2W 4dB Indoor		1/10
453203	Splitter 5...1220MHz "F" 3W 6dB Indoor		1/10
453103	Splitter 5...1220MHz "F" 4W 8dB Indoor		1/10
453403	Splitter 5...1220MHz "F" 6W 10dB Indoor		1/10
453303	Splitter 5...1220MHz "F" 8W 11dB Indoor		1/10



▲ Mini-Splitter
(57x 47 x 13 mm)



▲ 545501

BLACK OUTDOOR CASE FOR MINI SERIES



▲ 417801



▲ 543802



▲ 5155



▲ 5159



▲ 453203



▲ 453303

Ref.	Description		
ACCESSORIES			
545501	Face Plate White 93x74x21mm	W	10
4177	Outdoor Case Black Small Model Dimensions: External 113x88x35mm Internal 92x66x27mm	B	1/5
4163	Outdoor Case Grey Large Model Dimensions: External 136x127x45mm Internal 125x97x35mm	G	1/5
4061	Terminal Load "F" 750hm with DC Blocked		10/200
4058	Terminal Load "F" 750hm without DC Blocked		10/200
405802	Terminal Load "F" 750hm without DC Blocked, Plastic Box		100

TAPS WITH "EasyF" CONNECTOR

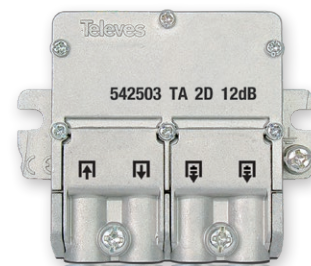
5...2400MHz			
542503	Mini-Tap 5...2400MHz "EasyF" 2W 12dB Indoor DC Pass I-O (TA - Floor 1)		10
542603	Mini-Tap 5...2400MHz "EasyF" 2W 16dB Indoor DC Pass I-O (A - Floors 2 & 3)		10
542703	Mini-Tap 5...2400MHz "EasyF" 2W 21dB Indoor DC Pass I-O (B - Floors 4...6)		10
542803	Mini-Tap 5...2400MHz "EasyF" 2W 25dB Indoor DC Pass I-O (C - Floors 7...12)		10
544402	Tap 5...2400MHz "EasyF" 4W 12dB Indoor DC Pass I-O (TA - Floor 1)		10
544502	Tap 5...2400MHz "EasyF" 4W 16dB Indoor DC Pass I-O (A - Floors 2 & 3)		10
544602	Tap 5...2400MHz "EasyF" 4W 20dB Indoor DC Pass I-O (B - Floors 4 & 5)		10
544702	Tap 5...2400MHz "EasyF" 4W 25dB Indoor DC Pass I-O (C - Floors 6...8)		10
5492	Tap 5...2400MHz "EasyF" 6W 16dB Indoor DC Pass I-O (TA - Floor 1)		6
5493	Tap 5...2400MHz "EasyF" 6W 20dB Indoor DC Pass I-O (A - Floors 2 & 3)		6
5494	Tap 5...2400MHz "EasyF" 6W 24dB Indoor DC Pass I-O (B - Floors 4 & 5)		6
5610	Tap 5...2400MHz "EasyF" 8W 16dB Indoor DC Pass I-O (TA - Floor 1)		6
5611	Tap 5...2400MHz "EasyF" 8W 22dB Indoor DC Pass I-O (A - Floor 2)		6

ACCESSORIES

545510	Face Plate for Mini Series White 62x56x18mm	W	10
417801	Outdoor Case Black Model for Mini Series Dimensions: External 88x78x39mm Internal 57x47x13mm	B	1/10
545501	Face Plate White 93x74x21mm	W	10
4177	Outdoor Case Black Small Model Dimensions: External 113x88x35mm Internal 92x66x27mm	B	1/5
4163	Outdoor Case Grey Large Model Dimensions: External 136x127x45mm Internal 125x97x35mm	G	1/5
4087	Terminal Load "EasyF" 750hm with DC Blocked		25
408701	Terminal Load "EasyF" 750hm with DC Blocked, Plastic Box		100

TAPS WITH "F" CONNECTOR

5...2400MHz			
5130	Tap 5...2400MHz "F" 2W 12dB Indoor (TA - Floor 1)		1/10
5131	Tap 5...2400MHz "F" 2W 15dB Indoor (A - Floors 2 & 3)		1/10
5132	Tap 5...2400MHz "F" 2W 18dB Indoor (B - Floors 4 & 5)		1/10
5133	Tap 5...2400MHz "F" 2W 23dB Indoor (C - Floors 6 & 7)		1/10
5134	Tap 5...2400MHz "F" 2W 27dB Indoor (D - Floors 8...10)		1/10
514110	Tap 5...2400MHz "F" 4W 12dB Indoor DC Pass All (TA - Floor 1)		1/10
514210	Tap 5...2400MHz "F" 4W 16dB Indoor DC Pass All (A - Floors 2 & 3)		1/10
514310	Tap 5...2400MHz "F" 4W 19dB Indoor DC Pass All (B - Floors 4 & 5)		1/10
514410	Tap 5...2400MHz "F" 4W 24dB Indoor DC Pass All (C - Floors 6...8)		1/10
★ 514510	Tap 5...2400MHz "F" 4W 29dB Indoor DC Pass All (D - Floors 9 & 10)		1/10
5135	Tap 5...2400MHz "F" 6W 19dB Indoor (TA - Floor 1)		1/10
5136	Tap 5...2400MHz "F" 6W 21dB Indoor (A - Floors 2 & 3)		1/10
5137	Tap 5...2400MHz "F" 6W 25dB Indoor (B - Floors 4...6)		1/10
5146	Tap 5...2400MHz "F" 8W 19dB Indoor (TA - Floor 1)		1/10
5147	Tap 5...2400MHz "F" 8W 20dB Indoor (A - Floors 2 & 3)		1/10
5148	Tap 5...2400MHz "F" 8W 25dB Indoor (B - Floors 4...6)		1/10



▲ Mini-Tap:
(57x 47 x 13 mm)



▲ 5494



▲ 5133



▲ 514110

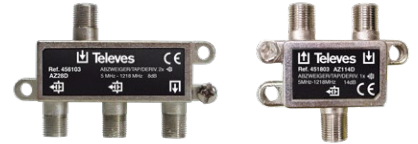


▲ 5146



▲ 4087

Ref.	Description		
TAPS WITH "F" CONNECTOR			
5...1220MHz - DOCSIS 3.1			
451803	Tap 5...1220MHz "F" 1W 14dB Indoor		1/10
451903	Tap 5...1220MHz "F" 1W 17dB Indoor		1/10
456103	Tap 5...1220MHz "F" 2W 8dB Indoor		1/10
456203	Tap 5...1220MHz "F" 2W 11dB Indoor		1/10
456303	Tap 5...1220MHz "F" 2W 14dB Indoor		1/10
456603	Tap 5...1220MHz "F" 2W 23dB Indoor		1/10
456703	Tap 5...1220MHz "F" 2W 26dB Indoor		1/10
457103	Tap 5...1220MHz "F" 4W 8dB Indoor		1/10
457203	Tap 5...1220MHz "F" 4W 11dB Indoor		1/10
457303	Tap 5...1220MHz "F" 4W 14dB Indoor		1/10
457403	Tap 5...1220MHz "F" 4W 17dB Indoor		1/10
457503	Tap 5...1220MHz "F" 4W 20dB Indoor		1/10
457603	Tap 5...1220MHz "F" 4W 23dB Indoor		1/10
457703	Tap 5...1220MHz "F" 4W 26dB Indoor		1/10
457803	Tap 5...1220MHz "F" 8W 12dB Indoor		1/10
457903	Tap 5...1220MHz "F" 8W 14dB Indoor		1/10
458003	Tap 5...1220MHz "F" 8W 17dB Indoor		1/10
458103	Tap 5...1220MHz "F" 8W 20dB Indoor		1/10
ACCESSORIES			
545501	Face Plate White 93x74x21mm	W	10
4177	Outdoor Case Black Small Model Dimensions: External 113x88x35mm Internal 92x66x27mm	B	1/5
4163	Outdoor Case Grey Large Model Dimensions: External 136x127x45mm Internal 125x97x35mm	G	1/5
4061	Terminal Load "F" 75Ohm with DC Blocked		10/200
4058	Terminal Load "F" 75Ohm without DC Blocked		10/200
405802	Terminal Load "F" 75Ohm without DC Blocked, Plastic Box		100



▲ 456103

▲ 451803



▲ 457503



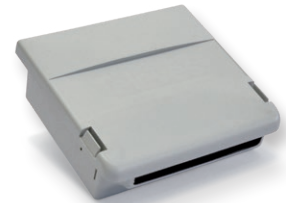
▲ 458003



▲ 545501



▲ 4177

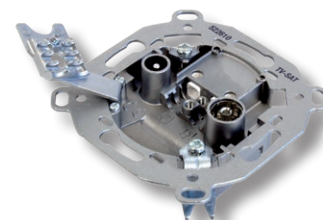


▲ 4163

Ref.	Description		
OUTLETS			
END OUTLETS			
5232	End Outlet Diplexed 5...1000MHz, TV-FM 0.5-3dB without DC Pass		10/100
5226	End Outlet Diplexed 5...862/950...2150MHz, TV/FM-SAT 0.6-1.5dB with DC Pass		10/100
522610	End Outlet Diplexed 5...790/950...2150MHz, TV/FM-SAT 0.6-1.5dB with DC Pass	LTE790	10/100
5276	End Outlet Diplexed 5...862/950...2150MHz, TV/FM-SAT 0.6-1.5dB with DC Pass (without Clamps)		10/100
527610	End Outlet Diplexed 5...790/950...2150MHz, TV/FM-SAT 0.6-1.5dB with DC Pass (without Clamps)	LTE790	10/100
524603	End Outlet Triplexed 5...2400MHz, TV-FM-SAT 4-4-1.5dB with DC Pass		10/100
524501	End Outlet Triplexed 5...2400MHz, TV/FM-SAT1-SAT2 1-1.5-1dB with DC Pass		10/100
5250	End Outlet Triplexed 5...2150MHz, TV-FM-SAT/DATA 5-3.8-6.5/4.5dB with DC Pass		10/100
5270	Through Outlet Bridged (Chassis Only)		10/100
★ 516110	Quad End Outlet 5...2200MHz, FM-TV-SAT1-SAT2 8-5-3-2.8dB with DC Pass + Back Box + Face Plate		10/100
5...790/862MHz - LOW THROUGH LOSSES			
5230	End Outlet 5...862MHz, TV-FM 4.5-18dB without DC Pass		10/100
5231	Through Outlet 5...862MHz, TV-FM 9.5-24dB without DC Pass		10/100
523110	Through Outlet 5...790MHz, TV-FM 9.5-24dB without DC Pass	LTE790	10/100
5...1000MHz			
5232	End Outlet Diplexed 5...1000MHz, TV-FM 0.5-3dB without DC Pass		10/100
5233	Through Outlet 5...1000MHz, TV-FM 7-26dB without DC Pass		10/100
5...2150MHz			
5229	End Outlet Splitter 5...2150MHz,TV/FM-SAT 4-5dB with DC Pass (Floor 1)		10/100
5228	Through Outlet Diplexed 5...2150MHz,TV/FM-SAT 8.5-10dB with DC Pass (Floors 2)		10/100
5227	Through Outlet Splitter 5...2150MHz,TV/FM-SAT 13-14dB with DC Pass (Floors 3...5)		10/100
5236	Through Outlet Splitter 5...2150MHz,TV/FM-SAT 20-24dB with DC Pass (Floors 6...12)		10/100
★ 524201	Through Outlet Triplexed 87...2400MHz, TV-FM-SAT 11-15-10dB with DC Pass		10/100
MULTIMEDIA			
524001	End Outlet Multimedia 5...1006MHz, TV-FM-DATA 8-7-3.6dB		10/100
524701	Through Outlet Multimedia 5...1006MHz, TV-FM-DATA 12-14.5-12dB		10/100
524801	Through Outlet Multimedia 5...1006MHz, TV-FM-DATA 19-20-17.5dB		10/100
ACCESSORIES			
80x80mm			
5441	Face Plate White for TV-R Outlet	Ⓜ	10
5440	Face Plate White for TV/R-SAT Outlet	Ⓜ	10
544302	Face Plate White for TV-R-SAT Outlet	Ⓜ	10
5275	Face Plate White for TV-R-SAT-DATA Outlet	Ⓜ	10
527402	Face Plate White for TV/R-SAT-DATA Outlet	Ⓜ	12
5442	Back Box White for Surface Mounting Outlet	Ⓜ	10
85x85mm			
544002	Face Plate White for TV/R-SAT Outlet	Ⓜ	10
544301	Face Plate White for TV-R-SAT Outlet	Ⓜ	10
★ 544101	Face Plate White for TV-R Outlet	Ⓜ	10



▲ 524501



▲ 522610



▲ 524603



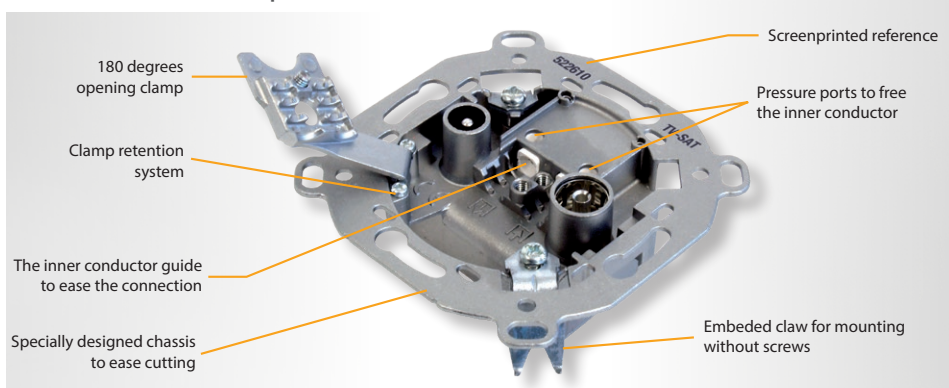
▲ 5250 + 5275



▲ 544302

▲ 5442

Outlets: General technical specifications



A simple push is enough to connect the inner conductor, no screws needed.

Support an inner conductor with diameters ranging: from Ø 0.65 to Ø 1.2 mm.

Support an outdoor cable with a diameter ranging: from Ø 5 to Ø 6.9 mm.

Allows the visualization of the connection.

Compliant with the European guidelines 2014/30/EU, 2014/35/EU, and RoHS 2011/65/EU.

The outlets with data connection are compatible with DOCSIS 3.0.

DISTRIBUTION

Ref.	Description	
CONNECTORS		
"IEC" - Ø 9.5mm		
4130	"IEC" Ø 9.5mm Connector Male Elbowed Shielded	25/250
4131	"IEC" Ø 9.5mm Connector Female Elbowed Shielded	25/250
413210	"PRO EasyF" "IEC" Ø 9.5mm Connector Male Elbowed Class A+ Shielded	25/250
413310	"PRO EasyF" "IEC" Ø 9.5mm Connector Female Elbowed Class A+ Shielded	25/250
"F"		
413410	"PRO EasyF" "Quick F" Connector Elbowed Class A+ Shielded	25/250
4176	"Quick F" Connector Elbowed Shielded	25/250
3802	"F" Connector Compression for TSH Triple Shielded Cables (SK), Plastic Box	50/500
410901	"F" Connector Compression Elbowed for T-100 & CXT-60 Cables	25
410701	"Quick F" Connector Compression Elbowed for T-100 & CXT-60 Cables, Plastic Box	25/250
★ 410702	Quick F" Connector Compression Elbowed for T-100 & CXT-60 Cables	25/500
★ 410801	F" Connector Compression for T-200 Cable	50/500
4104	"F" Connector Compression for T-100 Cable, Plastic Box	50/500
4105	"F" Connector Compression for CXT-5 (Ø 5mm) Cable, Plastic Box	50/500
4106	"F" Connector Compression for TR-165 Cable, Plastic Box	25/250
417102	"F" Connector Threaded with O-ring for T-100 Cable, Plastic Box	50
417101	"F" Connector Threaded with O-ring for T-100 Cable, Plastic Box	100/1000
4127	"F" Connector Threaded with O-ring for CXT-5 (Ø 5mm) Cable	30/720
3808	"F" Connector Threaded with O-ring for CXT-5 (Ø 5mm) Cable, Plastic Box	100/1000
9349	"F" Connector Threaded for TR-165 Cable	10/100
4120	"F" Connector for 1/2" Cable	1/20
SCATV 5/8"		
4122	5/8" Connector with O-ring for TR-165 Ø 11mm Cable	1
ACCESSORIES		
405701	Twin Adaptor "EasyF" Male - "F" Female	10
3821	Adapter "Quick F" Male - "F" Male, Plastic Box	50/500
4173	Adapter "F" Female - "F" Female	10/200
★ 417302	Adapter "F" Female - "F" Female (washer and nut included)	10/200
★ 382101	Adapter "Quick F" Male - "F" Male	20
4123	Adapter 5/8" Male - "F" Female	1/20
4071	DC Blocker "F"	10
4061	Terminal Load "F" 750hm with DC Blocked	10/200
4058	Terminal Load "F" 750hm without DC Blocked	10/200
405802	Terminal Load "F" 750hm without DC Blocked, Plastic Box	100
4087	Terminal Load "EasyF" 750hm with DC Blocked	25
408701	Terminal Load "EasyF" 750hm with DC Blocked, Plastic Box	100
★ 418001	Weatherproof Cap for "F" Compression & Crimp Connectors	10/250
★ 216401	Connection Kit for TSH Coaxial Cables - Carrying case which includes: 50x"F" 1 Compression Connectors (ref. 3802), 1xCable Stripper (ref. 2145), 1xCompression tool (ref. 216301), 1xHEX-11 Wrench (ref. 216101) and 10xCaps (ref. 418001)	
★ 216403	Connection Kit for T100 Coaxial Cables - Carrying case which includes: 50x"F" 1 Compression Connectors (ref. 4104), 1xCable Stripper (ref. 2145), 1xCompression tool (ref. 216301), 1xHEX-11 Wrench (ref. 216101) and 10xCaps (ref. 418001)	
TOOLS		
216101	Hex-11 Wrench for "F" Connectors	1/250
216120	Tightening Tool for "F" Connectors	1
2163	Tool for "F" Compression Connectors	1
216301	Compression Tool Straight "F" Connect	1
216310	Insertion Tool for "F" Compression Connectors	1



COAXIAL CABLE

Ref.	Description			
COAXIAL CABLES				
CU INNER CONDUCTOR / CuSn BRAID (CLASS A++ TRIPLE SHIELDED)				
EN 50117-2-4 / B2ca				
413910	Coaxial Cable SK2020plus LSFH UV Resistant B2ca Class A++ Triple Shielded TSH 18AtC Ø 1.05/4.6/6.9mm White	○	Ⓜ	100
413911	Coaxial Cable SK2020plus LSFH UV Resistant B2ca Class A++ Triple Shielded TSH 18AtC Ø 1.05/4.6/6.9mm White	○	Ⓜ	250
413912	Coaxial Cable SK2020plus LSFH UV Resistant B2ca Class A++ Triple Shielded TSH 18AtC Ø 1.05/4.6/6.9mm White	●	Ⓜ	500
EN 50117-2-4 / Cca				
414901	Coaxial Cable SK2015plus LSFH UV Resistant Cca Class A++ Triple Shielded TSH 18AtC Ø 1.05/4.6/6.9mm White	○	Ⓜ	100
414902	Coaxial Cable SK2015plus LSFH UV Resistant Cca Class A++ Triple Shielded TSH 18AtC Ø 1.05/4.6/6.9mm White	○	Ⓜ	250
EN 50117-2-4 / Eca				
4138	Coaxial Cable SK2000plus PVC Eca Class A++ Triple Shielded TSH 18VAtC Ø 1.02/4.6/6.70mm White	○	Ⓜ	100
413802	Coaxial Cable SK2000plus PVC Eca Class A++ Triple Shielded TSH 18VAtC Ø 1.02/4.6/6.70mm White	○	Ⓜ	250
413801	Coaxial Cable SK2000plus PVC Eca Class A++ Triple Shielded TSH 18VAtC Ø 1.02/4.6/6.70mm White	●	Ⓜ	500
CU INNER CONDUCTOR / CuSn BRAID (CLASS A+ TRIPLE SHIELDED)				
EN 50117-2-5 / Dca				
414002	Coaxial Cable SK2003plus LSFH UV Resistant Dca Class A+ Triple Shielded TSH 18AtC Ø 1.02/4.6/6.70mm Black	○	Ⓟ	100
414003	Coaxial Cable SK2003plus LSFH UV Resistant Dca Class A+ Triple Shielded TSH 18AtC Ø 1.02/4.6/6.70mm Black	○	Ⓟ	250
414004	Coaxial Cable SK2003plus LSFH UV Resistant Dca Class A+ Triple Shielded TSH 18AtC Ø 1.02/4.6/6.70mm Black	●	Ⓟ	500
EN 50117-2-4 / Eca⁽¹⁾				
413501	Coaxial Cable SK125plus PVC Eca Class A+ Triple Shielded TSH 18VAtC Ø 1.02/4.6/6.7mm White	○	Ⓜ	100
413502	Coaxial Cable SK125plus PVC Eca Class A+ Triple Shielded TSH 18VAtC Ø 1.02/4.6/6.7mm White	○	Ⓜ	250
413503	Coaxial Cable SK125plus PVC Eca Class A+ Triple Shielded TSH 18VAtC Ø 1.02/4.6/6.7mm White	●	Ⓜ	500
413708	Coaxial Cable SK110plus PVC Eca Class A+ Triple Shielded TSH 18VAtC Ø 1.02/4.6/6.70mm White	●	Ⓜ	250
413707	Coaxial Cable SK110plus PVC Eca Class A+ Triple Shielded TSH 18VAtC Ø 1.02/4.6/6.70mm Black	●	Ⓟ	250
CU INNER CONDUCTOR / CU BRAID / BCT-C-H (CLASS A)				
EN 50117-2-4 / Cca				
★ 414211	Coaxial Cable SK2005plus LSFH UV Resistant Cca Class A Triple Shielded TSH 18AtC Ø 1.00/4.6/6.7mm Black	○	Ⓟ	250
EN 50117-2-4 / Eca				
214102	Coaxial Cable T-100plus PVC Eca Class A 16VRtC Ø 1.13/4.8/6.6mm White	○	Ⓜ	100
214104	Coaxial Cable T-100plus PVC Eca Class A 16VRtC Ø 1.13/4.8/6.6mm White	○	Ⓜ	250
214108	Coaxial Cable T-100plus PVC Eca Class A 16VRtC Ø 1.13/4.8/6.6mm Black	○	Ⓟ	100
EN 50117-2-4 / Dca				
215101	Coaxial Cable T-100plus LSFH Dca Class A 16VRtC Ø 1.12/4.7/6.6mm Grey	○	Ⓞ	100
★ 213002	Coaxial Cable T-200 Plus LSFH Dca Class A 15VRtC Å 1.20/5.0/6.9mm Grey	○	Ⓞ	250
EN 50117-2-5 / Fca				
215501	Coaxial Cable T-100plus PE Fca Class A 16PRtC Ø 1.13/4.8/6.6mm Black	○	Ⓟ	100
215502	Coaxial Cable T-100plus PE Fca Class A 16PRtC Ø 1.13/4.8/6.6mm Black	●	Ⓟ	250
CU INNER CONDUCTOR / CU+AL BRAID				
EN 50117-2-4 / Eca				
2138	Coaxial Cable CXT PVC Cu/Cu+Al 18VRtC Ø 1.00/4.8/6.6mm White	○	Ⓜ	100
213802	Coaxial Cable CXT PVC Cu/Cu+Al 18VRtC Ø 1.00/4.8/6.6mm White	○	Ⓜ	250
2139	Coaxial Cable CXT PVC Cu/Cu+Al 18VRtC Ø 1.00/4.8/6.6mm Black	○	Ⓟ	100
2141	Coaxial Cable T-100 Plus PVC Eca Ø 1.13/4.8/6.6mm White	○	Ⓜ	100

TRIPLE SHIELDED CABLES

The Trishield cable provides the greatest immunity against interferences. Its use is specially recommend when trying to avoid interference.



COVERAGE UP TO 82%



SK2020plus (4139xx)

CLASS A++
B2ca

An exceptional TSH cable with high screening attenuation, that offers an A++ class.

Additionally, due to its LSFH outer sheath, it complies with the requirements for CPR class B2ca, so it has a very low fire hazard.



SK2015plus (4149xx)

CLASS A++
Cca



SK2000plus (4138xx)

CLASS A++
Eca



SK2003plus (4140xx)

CLASS A+
Dca



▲ SK110plus (4137xx)

CLASS A+
Eca



▲ SK125PLUS (4135xx)

CLASS A+
Eca



▲ T-100plus (214102/04/08)

CLASS A
Eca

CENELEC Standard:

EN 50117-2-1: Indoor Cable 5...1000MHz
EN 50117-2-4: Indoor Cable 5...3000MHz
EN 50117-2-5: Outdoor Cable 5...3000MHz

(1) Braid coverage:

SK125plus cable (4135xx) = 60%
SK110plus cable (4137xx) = 55%

COAXIAL CABLE

Ref.	Description			
COAXIAL CABLES				
CU INNER CONDUCTOR / AL BRAID (CLASS A+ TRIPLE SHIELDED)				
EN 50117-2-4 / Eca				
413601	Coaxial Cable SK100plus PVC Eca Class A+ Triple Shielded TSH 18VAtC Ø 1.02/4.6/6.7mm White	○	Ⓜ	100
413602	Coaxial Cable SK100plus PVC Eca Class A+ Triple Shielded TSH 18VAtC Ø 1.02/4.6/6.7mm White	○	Ⓜ	250
413603	Coaxial Cable SK100plus PVC Eca Class A+ Triple Shielded TSH 18VAtC Ø 1.02/4.6/6.7mm White	●	Ⓜ	500
CU INNER CONDUCTOR / AL BRAID / BCT-C-H (CLASS A)				
EN 50117-2-4 / Eca				
2126	Coaxial Cable T-100 PVC Eca Class A 16VAtC Ø 1.13/4.8/6.6mm White	○	Ⓜ	100
212601	Coaxial Cable T-100 PVC Eca Class A 16VAtC Ø 1.13/4.8/6.6mm White	●	Ⓜ	250
212602	Coaxial Cable T-100 PVC Eca Class A 16VAtC Ø 1.13/4.8/6.6mm Black	●	Ⓟ	250
★ 212604	Coaxial Cable T-100 PVC Eca Class A 16VAtC Ø 1.13/4.8/6.6mm White (Box)		Ⓜ	100
2128	Coaxial Cable CXT PVC Eca Class A 19VAtC Ø 1.00/4.5/6.5mm White	○	Ⓜ	100
212801	Coaxial Cable CXT PVC Eca Class A 19VAtC Ø 1.00/4.5/6.5mm White	●	Ⓜ	250
EN 50117-2-4 / Dca				
212811	Coaxial Cable CXT LSFH Dca Class A 19VAtC Ø 1.00/4.5/6.5mm Grey	●	Ⓞ	250
EN 50117-2-5 / Fca				
212501	Coaxial Cable T-100 PE Fca Class A 16PatC Ø 1.13/4.8/6.6mm Black	○	Ⓟ	100
212502	Coaxial Cable T-100 PE Fca Class A 16PatC Ø 1.13/4.8/6.6mm Black	●	Ⓟ	250
CCS (Cu+Ac) INNER CONDUCTOR / AL BRAID (CLASS A+ TRIPLE SHIELDED)				
EN 50117-2-4 / Eca				
414801	Cable Coaxial SK6Fplus PVC Eca Class A+ Triple Shielded TSH 19VAtC.A Ø 1.00/4.6/6.8mm White	○	Ⓜ	100
414802	Cable Coaxial SK6Fplus PVC Eca Class A+ Triple Shielded TSH 19VAtC.A Ø 1.00/4.6/6.8mm White	○	Ⓜ	250
414803	Cable Coaxial SK6Fplus PVC Eca Class A+ Triple Shielded TSH 19VAtC.A Ø 1.00/4.6/6.8mm White	●	Ⓜ	500
★ 414804	Cable Coaxial SK6Fplus PVC Eca Class A+ Triple Shielded TSH 19VAtC.A Ø 1.00/4.6/6.8mm White	●	Ⓜ	3000
CCS (Cu+Ac) INNER CONDUCTOR / AL BRAID (CLASS A)				
EN 50117-2-4 / Eca				
2127	Coaxial Cable CXT-1 PVC Eca 17VAtC.A Ø 1.00/4.7/6.7mm White	○	Ⓜ	100
212703	Coaxial Cable CXT-1 PVC Eca 17VAtC.A Ø 1.00/4.7/6.7mm White	●	Ⓜ	250
212704	Coaxial Cable CXT-1 PVC Eca 17VAtC.A Ø 1.00/4.7/6.7mm White	●	Ⓜ	500
212701	Coaxial Cable CXT-1 PVC Eca 17VAtC.A Ø 1.00/4.7/6.7mm Black	○	Ⓟ	100
212702	Coaxial Cable CXT-1 PVC Eca 17VAtC.A Ø 1.00/4.7/6.7mm Black	●	Ⓟ	250
CCS (Cu+Ac) INNER CONDUCTOR / AL BRAID (CLASS A)				
EN 50117-2-1 / Eca				
210102	Coaxial Cable CXT-50 PVC Eca Class A 23VAtC.A Ø 0.8/3.8/6.0mm White	●	Ⓜ	250
210202	Coaxial Cable CXT-60 PVC Eca Class A 19VAtC.A Ø 1.00/4.7/6.9mm White	●	Ⓜ	250
UNDERGROUND CABLES				
CU INNER CONDUCTOR / CU BRAID				
EN 50117-2-5 / Fca				
2140	Coaxial Cable 1/2" PE Fca Class A 7PRtC Ø 2.7/11.5/15.0mm Black	●	Ⓟ	500
214901	Coaxial Cable TR-165 PE Fca Class A 11PRtC Ø 1.63/7.2/10.1mm Black	●	Ⓟ	250
MICROCABLE				
CU INNER CONDUCTOR / CuSn BRAID (CLASS A/B)				
EN 50117-2-4 / Eca				
210601	Coaxial Cable CXT-5 PVC Eca Class A 24VAtC Ø 0.8/3.5/5.0mm White	○	Ⓜ	150
210603	Coaxial Cable CXT-5 PVC Eca Class B 24VAtC Ø 0.8/3.5/5.0mm White	○	Ⓜ	100
ACCESSORIES				
2145	Professional Coaxial Cable Stripper			10
2162	Coaxial Cable Stripper (Bag B2)			10
212001	Coaxial Cable / Optical Fiber Dispenser, Small model (plastic drums) ⁽¹⁾			1
212011	Coaxial Cable / Optical Fiber Dispenser, Large model (plastic drums) ⁽²⁾			1



▲ SK100plus (4136xx)

CLASS A+
Eca



▲ T-100 (2126, 212601)

CLASS A
Eca



▲ 212811

CLASS A
Dca



▲ SK6Fplus (4148xx)

CLASS A+
Eca



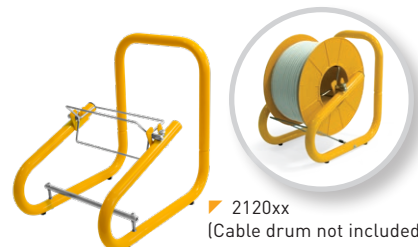
▲ 1/2" (2140)

CLASS A
Fca



▲ TR-165 (214901)

CLASS A
Fca



▶ 2120xx
(Cable drum not included)



▶ MORE INFORMATION ABOUT CPR:
en.televes.com/cpr

(1) For coaxial cable in 100m plastic drum.

(2) For coaxial cable in 250m plastic drum.

Coaxial cable: technical specifications

References		41391x	21410x	4138xx	4140xx	4135xx	4137xx	21410x	21550x	215101	2138xx 2139	4136xx
Type		SK2020plus Class A++	SK2015plus Class A++	SK2000plus Class A++	SK2003plus Class A+	SK125plus Class A+	SK110plus Class A+	T-100plus Class A	T-100plus Class A	CXT	SK100plus Class A+	
Inner Conductor	Ø mm	1.05	1.05	1.02		1.02		1.13	1.12	1.00	1.02	
	Material	Cu	Cu	Cu		Cu		Cu	Cu	Cu	Cu	
	Res. Ohm/Km	22	22	22		22		<20	18	<23	<22	
Dielectric	Ø mm	4.6	4.6	4.6		4.6		4.8	4.7	4.8	4.6	
	Material	PEE	PEE	PEE		PEE		PEE	PEE	PEE	PEE	
Over Lapped Foil	Material	B	B	B		B		C	C	C	B	
Braid	Material	CuSn (98% Cu)	CuSn (98% Cu)	CuSn (98% Cu)		CuSn (98% Cu)		Cu	Cu	CCA	Al	
	Coverage %	82	82	82		60	55	73	73	35	60	
	Res. Ohm/Km	<11	<11	10.5		15.0		<12	≤14	<35	<22	
Anti-migrating Film		No	No	No		No		Yes	Yes	No	No	
2 nd shielding foil		Yes	Yes	Yes		Yes		No	No	No	Yes	
Petro-Jelly		No	No	No		No		No	No	No	No	
Outer sheath	Ø mm	6.9	6.9	6.7		6.7		6.6	6.6	6.6	6.7	
	Material	LSFH UV Resistant	LSFH UV Resistant	PVC	LSFH UV Resistant	PVC		PVC	PE	LSFH	PVC	PVC
Minimum bending radius	mm	34.5	34.5	33.5		33.5		33	33	33	33.5	
Shielding at 1GHz	dB	>105	>105	>95		>95		>85	>85	>75	>95	
Capacitance	pF/m	54	54	54		54		55	55	55	53	
Impedance	Ohm	75	75	75		75		75	75	75	75	
Velocity Ratio	%	84	84	84		84		82	82	82	82	
Attenuations (dB/m)												
Frequency [MHz]	200	0.09	0.09	0.09		0.09		0.08	0.08	0.09	0.09	
	500	0.14	0.14	0.14		0.14		0.13	0.13	0.14	0.14	
	800	0.18	0.18	0.18		0.18		0.16	0.16	0.18	0.18	
	1000	0.21	0.21	0.21		0.21		0.19	0.19	0.20	0.21	
	1350	0.25	0.25	0.25		0.25		0.22	0.22	0.24	0.25	
	1750	0.28	0.28	0.28		0.28		0.25	0.25	0.28	0.28	
	2050	0.31	0.31	0.30		0.31		0.28	0.28	0.30	0.30	
2300	0.32	0.32	0.32		0.32		0.30	0.30	0.32	0.32		

References		2126xx	2125xx	4148xx	2128 212801	212811	2127xx	210102	210202	210601	210603	2140	214901
Type		T-100 Class A	SK6Fplus Class A+	CXT	CXT-1	CXT-50	CXT-60	CXT-5		1/2"	TR-165		
Inner Conductor	Ø mm	1.13	1.02	1.00	1.00	0.80	1.00	0.80		2.70	1.63		
	Material	Cu	CCS	Cu	CCS	CCS	CCS	Cu		Cu	Cu		
	Res. Ohm/Km	<20	<110	<23	<120	<140	<95	<37		3.2	<9		
Dielectric	Ø mm	4.8	4.6	4.5	4.7	3.8	4.7	3.5		11.5	7.2		
	Material	PEE	PEE	PEE	PEE	PEE	PEE	PEE		PEE	PEE		
Over Lapped Foil	Material	A	B	B	B	A	A	A		C	D		
Braid	Material	Al	Al	Al	Al	Al	Al	TCCAM		Cu	Cu		
	Coverage %	77	60	79	77	75	77	74	55	53	70		
	Res. Ohm/Km	<27	<30	<31	<30	<32	<30	<28	<35	7	<7.2		
Anti-migrating Film		No	No	No	No	No	No	No		No	No		
2 nd shielding foil		No	Yes	No	No	No	No	No		No	No		
Petro-Jelly		No	No	No	No	No	No	No		Yes	Yes		
Outer sheath	Ø mm	6.6	6.8	6.5	6.7	6.0	6.9	5.0		15.0	10.1		
	Material	PVC	PE	PVC	PVC	LSFH	PVC	PVC	PVC	PVC	PE	PE	
Minimum bending radius	mm	33	34	33	33	30	34.5	25		75	50		
Shielding at 1GHz	dB	>85	>85	>85	>85	>85	>85	>85	>75	>85	>85		
Capacitance	pF/m	52	53	54	54	54	54	53		55	53		
Impedance	Ohm	75	75	75	75	75	75	75		75	75		
Velocity Ratio	%	85	82	82	82	82	82	82		82	84		
Attenuations (dB/m)													
Frequency [MHz]	200	0.08	0.10	0.09	0.09	0.11	0.09	0.11		0.03	0.05		
	500	0.13	0.15	0.14	0.15	0.18	0.15	0.18		0.05	0.09		
	800	0.16	0.19	0.19	0.17	0.23	0.19	0.24		0.07	0.11		
	1000	0.19	0.22	0.21	0.23	0.26	0.21	0.26		0.08	0.13		
	1350	0.22	0.26	0.25	0.27	0.30	0.25	0.30		0.10	0.15		
	1750	0.25	0.29	0.29	0.32	0.35	0.29	0.35		0.12	0.18		
	2050	0.28	0.31	0.32	0.35	0.38	0.32	0.37		0.13	0.19		
2300	0.30	0.33	0.35	0.37	0.41	0.34	0.39		0.14	0.24			

Sheath	Environment
PVC	Indoor
PE	Outdoor
LSFH	Special (Low Smoke Free Halogen)

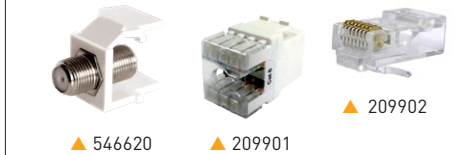
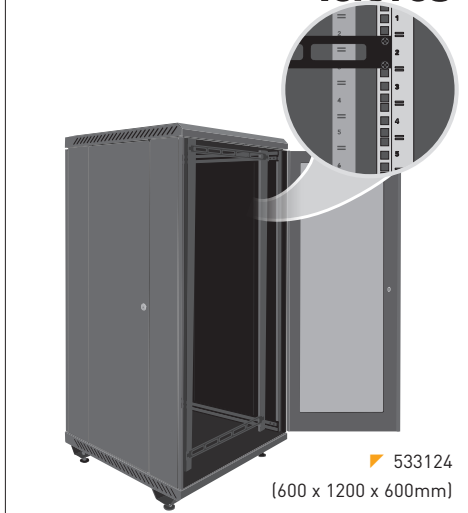
Over Lapped Foil composition Environment	
A	Aluminium + Polyester + Aluminium
B	Aluminium + Polyester
C	Copper + Polyester
D	Aluminium + Polypropylene

Other abbreviations	
PE	Polyethylene
PEE	Foam Polyethylene
PVC	Polyvinyle Chlorhidre
Al	Aluminium
Cu	Copper
CCS	Copper Clad Steel
CuSn	Tinned Copper
TCCAM	Tinned Copper Clad Aluminium Magnesium

DATA ENCLOSURES AND CABLES

Televes

Ref.	Description		
RACKS, ENCLOSURES AND UAP			
RACKS AND ACCESSORIES			
533106	19" Rack Cabinet 6RU (+2RU extra). Glazed Door and Accesible from the side. Wall/Ground Mount	1	
★ 533105	19" Rack Cabinet 6RU (+2RU extra). Glazed Door and Accesible from the side. Wall/Ground Mount (Disassembled) ⁽¹⁾	1	
533108	19" Rack Cabinet 8RU (+2RU extra). Glazed Door and Accesible from the side. Wall/Ground Mount	1	
★ 533107	19" Rack Cabinet 8RU (+2RU extra). Glazed Door and Accesible from the side. Wall/Ground Mount (Disassembled) ⁽¹⁾	1	
533113	19" Rack Cabinet 13RU (+2RU extra). Glazed Door and Accesible from the side. Wall/Ground Mount	1	
★ 533112	19" Rack Cabinet 13RU (+2RU extra). Glazed Door and Accesible from the side. Wall/Ground Mount (Disassembled) ⁽¹⁾	1	
533117	19" Rack Cabinet 17RU (+2RU extra). Glazed Door and Accesible from the side. Wall/Ground Mount	1	
533124	19" Rack Cabinet 24RU (+2RU extra). Glazed Door and Accesible from the side. Ground Mount	1	
533150	Panel for Rack 19" 1RU, Up to 24 "F" connectors	1	
533153	T.OX Panel for Rack 19" 1RU, Up to 2x7 "F" connectors	1	
533151	Panel for Rack 19" 1RU, Up to 24 "RJ45" connectors	1	
533154	Cable Management for Rack 19" 1RU, 5 Holes	1	
533156	Cable Management for Rack 19" 1RU, 5 Rings	1	
★ 533157	SplICE Box for Rack 19" 2RU, Up to 48 "SC" connectors (Depth 230mm)	1	
533152	SplICE Box for Rack 19" 1RU, Up to 24 "SC" connectors (Depth 230mm)	1	
533155	Tray for Rack 19" 2RU (Depth 265mm)	1	
533161	Blank Panel for Rack 19" 1RU	1	
533163	Blank Panel for Rack 19" 3RU	1	
533165	Blank Panel for Rack 19" 5RU	1	
533170	Screw Kit for Rack 19": Screw with washer and nut (50 units)	1	
ENCLOSURES			
546601	Closed Main Terminal Enclosure for Data/Coaxial Distribution (Up to 48 connections)	1	
546610	Open Main Terminal Panel for Data/Coaxial Distribution (Up to 24 connections)	1	
546701	Data/Coaxial/Fiber Network Terminal Enclosure	1	
546620	Coaxial Adapter Support "F" Female - "F" Female, for Panels (Ref. 546610)	1	
UAP (USER ACCESS POINT)			
546501	Passive Multiplexer "RJ45" 1Male-9Females with 0.2m LSFH Lead	1	
209910	Data Terminal Box with 1 Cat.-6 Female RJ45 Connector	1	
DATA CABLES			
CAT 7			
219101	Data Cable S/FTP Cat.-7 Cca Cu LSFH Ø 7.4mm White	Ⓜ	305
CAT 6A			
219301	Data Cable U/FTP Cat.-6A Cca Cu LSFH Ø 6.9mm White	Ⓜ	305
CAT 6			
Dca			
212101	Data Cable F/UTP Cat.-6 Dca Cu LSFH Ø 7.2mm Violet	Ⓧ	500
2123	Data Cable U/UTP Cat.-6 Dca Cu LSFH Ø 6.2mm Violet	Ⓧ	305
212302	Data Cable U/UTP Cat.-6 Dca Cu LSFH Ø 6.2mm Violet	Ⓧ	1000
Eca			
212310	Data Cable U/UTP Cat.-6 Eca Cu LSFH Ø 6.2mm Violet	Ⓧ	305
2199	Data Cable U/UTP Cat.-6 Eca Cu PVC Ø 6.2mm White	Ⓜ	305
Fca			
212201	Data Cable U/UTP Cat.-6 Fca Cu PE Ø 6.2mm White	Ⓜ	305
CAT 5E			
Eca			
219502	Data Cable F/UTP Cat.-5E Eca Cu LSFH Ø 6.3mm Grey	Ⓒ	305
219602	Data Cable U/UTP Cat.-5E Eca Cu LSFH Ø 5.5mm Grey	Ⓒ	305
Fca			
219701	Data Cable U/UTP Cat.-5E Fca Cu PE Ø 5.5mm Black	Ⓑ	305
DATA CONNECTORS			
209901	Data Connector RJ45 UTP Cat.-6 Female		10
209901	Data Connector RJ45 UTP Cat.-6 Female		10
★ 209401	Kit - Mallette de transport comprenant: 50xConnecteurs RJ45 UTP Cat 6 Mâle (réf. 209902), 15xConnecteurs RJ45 UTP Cat 6 Femelle (réf. 209901) et 1xPince à Sertir (réf. 209801)		100
ACCESSORIES			
209801	Crimping Tool RJ45/RJ11/RJ12 and 4P4C/4P2C		1



(1) Includes 1U cable panels (2 units)

SET TOP BOXES & HOME ACCESSORIES

Ref.	Description	
DTH STBs		
SATELLITE TV		
717402	Satellite Digital Set-top Box FTA DVB-S/S2 (S/PDIF + SCR1/2)	1/10
717501	Satellite Digital Set-top Box FTA "zAs HD SAT" (FreeSat)	1/10
MODULATORS		
585401	DiMod HD Encoder/Modulator DVB-T/DVB-C. 1i: HDMI/USB - 1 Mux(47...862MHz): CODFM/QAM (MPEG2/4) Configurable by WiFi	1
640301	Wall Mount	1
5858	Domestic Modulator with Display (VHF/UHF)	1
AUDIO/VIDEO & IR TRANSMISSION		
716701	Digidom Transmitter + Receiver Audio/Video 5.8GHz 8 Channels	1/10
IR OVER RF TRANSMISSION		
723703	Digidom Universal Transmitter + Receiver, Remote Control Extender, 8 Channels	1/30
721903	Digidom Universal Transmitter, Remote Control Extender, 8 Channels	1/50
IR OVER COAXIAL CABLE TRANSMISSION		
7605	Transmitter + Receiver Remote Control Extender over Coaxial Cable	1/6
7606	Single Transmitter Remote Control Extender over Coaxial Cable	1/10

DIMOD



MULTI-STANDARD HD ENCODER / MODULATOR

With a domestic design, DiMod generates a digital multiplex from **one high definition audio/video source**. It is configurable with a **smart-phone, tablet or PC wirelessly** with an user friendly embedded web interface.



▲ 640301



▲ 717402



▲ zAs HD SAT



▲ 716701



▲ 723703

DO IT YOURSELF

Ref.	Description		
ANTENNAS			
TERRESTRIAL - with TForce Technology			TFORCE
148925	Ellipse Terrestrial Antenna UHF (Ch21-48), G 38dBi BOSS ON PSU included (Single Packing)	LTE700	1
148923	Ellipse Terrestrial Antenna UHF (Ch21-48), G 38dBi BOSS ON PSU included, UK plug (Single Packing)	LTE700	1
148905	Ellipse Terrestrial Antenna UHF (Ch21-60), G 38dBi BOSS ON PSU included (Single Packing)	LTE790	1
149921	DAT BOSS Terrestrial Antenna UHF (Ch21-48) G 17dBi BOSS OFF, G 42dBi BOSS ON (Single Packing)	LTE700	1
149941	DAT BOSS Terrestrial Antenna UHF (Ch21-60) G 17dBi BOSS OFF, G 45dBi BOSS ON (Single Packing)	LTE790	1/5
149721	DAT BOSS LR Terrestrial Antenna UHF (Ch21-48) G 19dBi BOSS OFF, G 47dBi BOSS ON (Single Packing)	LTE700	1
149740	DAT BOSS LR Terrestrial Antenna UHF (Ch21-60) G 19dBi BOSS OFF, G 47dBi BOSS ON (Single Packing)	LTE790	1
144022	DINOVA BOSS Terrestrial Antenna UHF (Ch21-48) G 7dBi BOSS OFF, G 34dBi BOSS ON (Kit with accessories)	LTE700	1
144012	DINOVA BOSS Terrestrial Antenna UHF (Ch21-60) G 7dBi BOSS OFF, G 34dBi BOSS ON (Kit with accessories)	LTE790	1
144422	OMNINOVA BOSS Terrestrial Antenna BI/FM/BIII/UHF(Ch21-48) G 17/16/25/25dBi BOSS ON (Kit with accessories)	LTE700	1
144442	OMNINOVA BOSS Terrestrial Antenna BI/FM/BIII/UHF(Ch21-60) G 17/16/25/25dBi BOSS ON (Kit with accessories)	LTE790	1
TERRESTRIAL			TFORCE
144501	CAMPNOVA BOSS Terrestrial Antenna FM/BIII/UHF G -2/10/22dBi BOSS ON (Kit with accessories)	LTE790	1
INDOOR SET TOP ANTENNAS - with TForce Technology			TFORCE
★ 130501	BEXIA Indoor Terrestrial Antenna VHF/UHF (Ch5-12/21-48) G 15/18dBi (USB-microUSB cable included, for 5V powering)	LTE700	1
130220	INNOVA BOSS Indoor Terrestrial Antenna UHF (Ch21-48) G 20dBi (USB-microUSB cable included, for 5V powering)	LTE700	1
130240	INNOVA BOSS Indoor Terrestrial Antenna UHF (Ch21-60) G 20dBi (USB-microUSB cable included, for 5V powering)	LTE790	1
UNIVERSAL SATELLITE			
7506	Sat Kit 830 Digital: ISD Offset Dish 830 Al (Ref. 793101) + Single LNB (Ref. 7475) + Satellite Digital Set-top Box FTA DVB-S/S2 (Ref. 717402)		1
7525	Sat Kit 830 Digital with Monoblock: ISD Offset Dish 830 Al (Ref. 793101) + LNB Monoblock (Ref.7611) + Satellite Digital Set-top Box FTA DVB-S/S2 (Ref. 717402)		1
LNBs			
4365	Single (Universal) LNB Hh/Vh/Hl/VI (Blister T1)		6
4332	Twin LNB (2 Outputs Hh/Vh/Hl/VI) (Blister T2)		6
DIGITAL RECEIVERS			
SATELLITE TV			
717402	Satellite Digital Set-top Box FTA DVB-S/S2 (S/PDIF + SCR1/2)		1/10
717501	Satellite Digital Set-top Box FTA "zAs HD SAT" (FreeSat)		1/10
LTE FILTERS			LTE790
"IEC" CONNECTOR			
404411	Medium Rejection LTE Filter (MR) "IEC" 470...774MHz UHF (Ch21-58) Indoor (Bag B3)		10
404412	High Rejection LTE Filter (HR) "IEC" 47...790MHz VHF/UHF (Ch21-60) Indoor (Bag B3)		10



▲ Ellipse



▲ DiNova BOSS

▲ CampNova BOSS



▲ Bexia



▲ InNova BOSS



▲ 7525



▲ 717402

Ref.	Description		
MODULATORS			
585401	DiMod HD Encoder/Modulator DVB-T/DVB-C. 1i: HDMI/USB - 1 Mux(47...862MHz); CODFM/QAM (MPEG2/4) Configurable by WiFi	1	
5858	Domestic Modulator with Channel (VHF/UHF)	1	
TERRESTRIAL AMPLIFICATION KITS			
			LTE790
438640	NanoKom Mast Amplifier 3i/1o "EasyF" VHFmix-UHF[dc]-SATmix[dc] with USOS + PicoKom PSU 1i/1o "EasyF" 12V-220mA (Refs.561601+5796) (Blister T1)	8	
438840	NanoKom Mast Amplifier 3i/1o "EasyF" BIII/UHF[dc]-FMmix-SATmix[dc] with USOS + PicoKom PSU 1i/1o "EasyF" 12V-220mA (Refs.561501+5796) (Blister T1)	8	
POWER SUPPLY UNITS			
550402	Domestic Power Supply Unit 1i/2o "F": 5...862MHz 24V-130mA (Blister T1)	8	
DOMESTIC AMPLIFIERS			
5530	Domestic Amplifier 1i/(2o+TV) "F": 5...30/47...862/950..2150MHz G(-9)/18/20dB Vo 105/110dB μ V +Output TV Outlet G(-16)/10/12dB (Blister T1)	8	
552240	Domestic Amplifier 1i/(2o+TV) "F": 47...790MHz G 20dB Vo 106dB μ V + Output to a TV Outlet G 12dB (Blister T1)	8	LTE790
5523	Domestic Amplifier 1i/(4o+TV) "F": 47...862MHz G 16dB Vo 102dB μ V + Output to a TV Outlet G 11dB (Blister T1)	8	
552340	Domestic Amplifier 1i/(4o+TV) "F": 47...790MHz G 16dB Vo 102dB μ V + Output to a TV Outlet G 11dB (Blister T1)	8	LTE790
5531	Domestic Amplifier 1i/6o "F": 47...862MHz G 16dB Vo 103dB μ V (Blister T1)	8	
552740	Domestic Amplifier 1i/1o "IEC": 47...790MHz G 25dB Vo 112dB μ V (Blister T1)	8	LTE790
552741	Domestic Amplifier 1i/1o "IEC": 47...790MHz G 25dB Vo 112dB μ V (UK Plug)	5	LTE790
552840	Domestic Amplifier 1i/(2o+TV) "IEC": 47...790MHz G 20dB Vo 106dB μ V + Output TV Outlet G 12dB (Blister T1)	8	LTE790
545720	Domestic Amplifier 1i/(2o+TV) "IEC": 47...694MHz G 20dB Vs 110dB μ V + Output TV Outlet G 12dB + Preamp.Pow. 12V-100mA (Blister T1)	8	LTE700
545801	Auto-LTE Domestic Amplifier 1i/(2o+TV) "F": 47...694/782MHz G 20dB Vo 101dB μ V Auto-Adjustment + Output to a TV Outlet G 11dB + Preamplifier Powering 12V-100mA (Blister T1)	8	AUTO LTE
552940	Domestic Amplifier 1i/(4o+TV) "IEC": 47...790MHz G 16dB Vo 102dB μ V + Output to a TV Outlet G 11dB (Blister T1)	8	LTE790
ATTENUATORS			
4315	Adjustable Attenuator "IEC" \varnothing 9.5mm 1 to 25dB VHF/UHF DC Pass (Bag B1)	10	
COMBINERS			
			LTE790
433401	Mast Triplexer 3i/1o: VHF-UHF[dc]-UHF (Blister T2)	8	
434001	Combiner MATV-SAT 2i/1o: 5..790-950..2050MHz[dc] (Blister T1)	8	
SPLITTERS			
4320	Inductive Splitter "IEC" \varnothing 9.5mm 1 Male - 2 Females DC Pass 1 output (Bag B1)	10	
4322	Inductive Splitter "IEC" \varnothing 9.5mm 1 Female - 2 Males DC Pass All (Bag B1)	10	
432803	Mini-Splitter 5...2400MHz "EasyF" 2W 4.3/4dB Indoor DC Pass O-I (Bag B3)	8	
432902	Splitter 5...2400MHz "EasyF" 4W 9/7dB Indoor DC Pass All (Blister T1)	8	
434103	Mini-Splitter 5...2400MHz "EasyF" 2W 4.3/4dB DC Pass All With Outdoor Mounting Case (Blister T1)	10	B
434202	Splitter 5...2400MHz "EasyF" 4W 9/7dB DC Pass All With Outdoor Mounting Case (Blister T1)	8	B
OUTLETS			
4335	Bridged Outlet + Face Plate TV-R + Back Box for Surface Mounting Outlet (Blister T1)	8	
4336	White Back Box for Surface Mounting Outlet (Blister T1)	10	W
4372	End Outlet 5...862MHz, TV-FM 4.5-18dB w/o DC Pass+ Face Plate (Blister T1)	8	
4373	Through Outlet 5..862MHz, TV-FM 9.5-24dB w/o DC Pass+ Face Plate (Blister T1)	8	
4301	End Outlet Diplexed 5...2150MHz, TV/FM-SAT 0.6-1.5dB with DC Pass + Face Plate (Blister T1)	8	



▲ 545801



▲ 552840



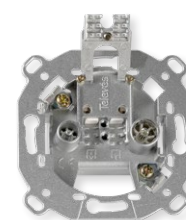
▲ 4315



▲ 434103



▲ 432803



▲ 4373

Ref.	Description		
COAXIAL			
COAXIAL CABLE			
4371	Coaxial Cable PVC Ø 6.6mm White 10m (Blister T2)	Ⓜ	10
435501	Coaxial Cable PVC Ø 6.6mm White 20m (Reel)	Ⓜ	1/20
CLASS A++ CABLE LEADS			
3851	Coaxial Cable Lead "F" Compression 1.5m White (Bag B0)	Ⓜ	30
385101	Coaxial Cable Lead "F" Compression 3m White (Bag B0)	Ⓜ	20
385102	Coaxial Cable Lead "F" Compression 5m White (Bag B0)	Ⓜ	15
3852	Coaxial Cable Lead "IEC" Male-Female Compression 1.5m White (Bag B0)	Ⓜ	30
385201	Coaxial Cable Lead "IEC" Male-Female Compression 3m White (Bag B0)	Ⓜ	20
385202	Coaxial Cable Lead "IEC" Male-Female Compression 5m White (Bag B0)	Ⓜ	15
3856	Coaxial Cable Lead "F" - "IEC" Male Compression 1.5m White (Bag B0)	Ⓜ	30
385601	Coaxial Cable Lead "F" - "IEC" Male Compression 3m White (Bag B0)	Ⓜ	20
385602	Coaxial Cable Lead "F" - "IEC" Male Compression 5m White (Bag B0)	Ⓜ	15
3854	Coaxial Cable Lead "F" - "IEC" Female Compression 1.5m White (Bag B0)	Ⓜ	30
385401	Coaxial Cable Lead "F" - "IEC" Female Compression 3m White (Bag B0)	Ⓜ	20
385402	Coaxial Cable Lead "F" - "IEC" Female Compression 5m White (Bag B0)	Ⓜ	15
3853	Coaxial Cable Lead "F" Compression - "Quick F" "PRO EasyF" 1.5m White (Bag B0)	Ⓜ	30
385301	Coaxial Cable Lead "F" Compression - "Quick F" "PRO EasyF" 3m White (Bag B0)	Ⓜ	20
385302	Coaxial Cable Lead "F" Compression - "Quick F" "PRO EasyF" 5m White (Bag B0)	Ⓜ	15
385501	Coaxial Cable Lead "F" Compression - "IEC" Female "PRO EasyF" 3m White (Bag B0)	Ⓜ	20
385701	Coaxial Cable Lead "F" Compression - "IEC" Male "PRO EasyF" 3m White (Bag B0)	Ⓜ	20
3858	Coaxial Cable Lead "IEC" Male Compression - "IEC" Female "PRO EasyF" 1.5m White (Bag B0)	Ⓜ	30
385801	Coaxial Cable Lead "IEC" Male Compression - "IEC" Female "PRO EasyF" 3m White (Bag B0)	Ⓜ	20
385802	Coaxial Cable Lead "IEC" Male Compression - "IEC" Female "PRO EasyF" 5m White (Bag B0)	Ⓜ	15
CABLE LEADS			
431001	Coaxial Cable Lead "IEC" Ø 9.5mm Elbowed Shielded Male-Female 1.5m Grey (Blister T1)	Ⓒ	8
431002	Coaxial Cable Lead "IEC" Ø 9.5mm Elbowed Shielded Male-Female 2.5m Grey (Blister T1)	Ⓒ	8
4389	Coaxial Cable Lead "IEC" Ø 9.5mm Male-Female 1.5m White (Blister T1)	Ⓜ	8
4312	Coaxial Cable Lead "IEC" Ø 9.5mm Male-Female 1.5m Black (Blister T1)	Ⓟ	8
4311	Coaxial Cable Lead "IEC" Ø 9.5mm Male-Female 2.5m White (Blister T1)	Ⓜ	8
4314	Coaxial Cable Lead "IEC" Ø 9.5mm Male-Female 2.5m Black (Blister T1)	Ⓟ	8
COAXIAL CONNECTORS			
437401	"PRO EasyF" "IEC" Ø 9.5mm Connector Male Elbowed Class A+ Shielded (Bag B1)		10
437501	"PRO EasyF" "IEC" Ø 9.5mm Connector Female Elbowed Class A+ Shielded (Bag B1)		10
437601	Set of "PRO EasyF" "IEC" Ø 9.5mm Connectors Male & Female Elbowed Class A+ Shielded (Bag B1)		10
437410	"IEC" Ø 9.5mm Connector Male Elbowed Shielded (Bag B1)		10
437510	"IEC" Ø 9.5mm Connector Female Elbowed Shielded (Bag B1)		10
437610	Set of "IEC" Ø9.5mm Connectors Male & Female Elbowed Shielded (Bag B1)		10
4303	"IEC" Ø 9.5mm Connector Female Straight (Bag B1)		10
4305	"IEC" Ø 9.5mm Connector Male Straight (Bag B1)		10
4316	Set of "IEC" Ø9.5mm Connectors Male & Female Straight (Bag B1)		10
4307	Adapter "F" Female - "F" Female (Bag B1)		10
4309	Joint Connector for Coaxial Cable (Bag B1)		10
4317	2 "F" Connectors Threaded with O-ring for T-100 Cable (Bag B1)		10
4306	"F" Connector Threaded with O-ring for T-100 Cable + Weatherproof Cap (Bag B1)		10
ACCESSORIES			
4360	Opened Clip for Coaxial Cable (25 units) (Bag B1)		10
2162	Coaxial Cable Stripper (Bag B2)		10



▶ 435501

Cable lead made with SK2000plus, a trishielded high screening cable. **A++**



▶ 3851xx



▶ 3852xx



▶ 3856xx



▶ 4310xx



▶ 437401



▶ 437501



▶ 437410



▶ 437510

Ref.	Description	
HOME ACCESSORIES		
AUDIO/VIDEO & IR TRANSMISSION		
716701	Digidom Transmitter + Receiver Audio/Video 5.8GHz 8 Channels	1/10
IR OVER RF TRANSMISSION		
723703	Digidom Universal Transmitter + Receiver, Remote Control Extender, 8 Channels	1/30
721903	Digidom Universal Transmitter, Remote Control Extender, 8 Channels	1/50
IR OVER COAXIAL CABLE TRANSMISSION		
7605	Transmitter + Receiver Remote Control Extender over Coaxial Cable	1/6
7606	Single Transmitter Remote Control Extender over Coaxial Cable	1/10
FIBER OPTICS CONNECTION		
232621	F.O. Patch Cord Single-mode LSFH Pre-terminated "SC/APC" 2m (Bag B4)	10
★ 232623	F.O. Patch Cord Single-mode LSFH Pre-terminated "SC/APC" 0.5m (Bag B4)	10
AUDIO/VIDEO CONNECTION		
4319	SCART Cable Male-Male 21 Pins 1.2m Black (Blister T1)	B 10
494501	HDMI Cable Male-Male 1.5m Black (Blister T1)	B 8
494502	HDMI Cable Male-Male 3m Black (Blister T2)	B 10
494503	HDMI Cable Male-Male 5m Black (Blister T2)	B 10
494505	HDMI Cable Male-Male 1.5m Black (Bag)	B 100
MAST ACCESSORIES		
4951	Mast Clamp Zinc+RCP Ø 25...45mm (Blister T1)	8
4952	"U" Bolt for Mast Clamp Ø 25...45mm (Blister T1)	8
4361	Guy Wire Mounting Kit Ø 45mm (Blister T2)	10



▲ 232621



▲ 494501



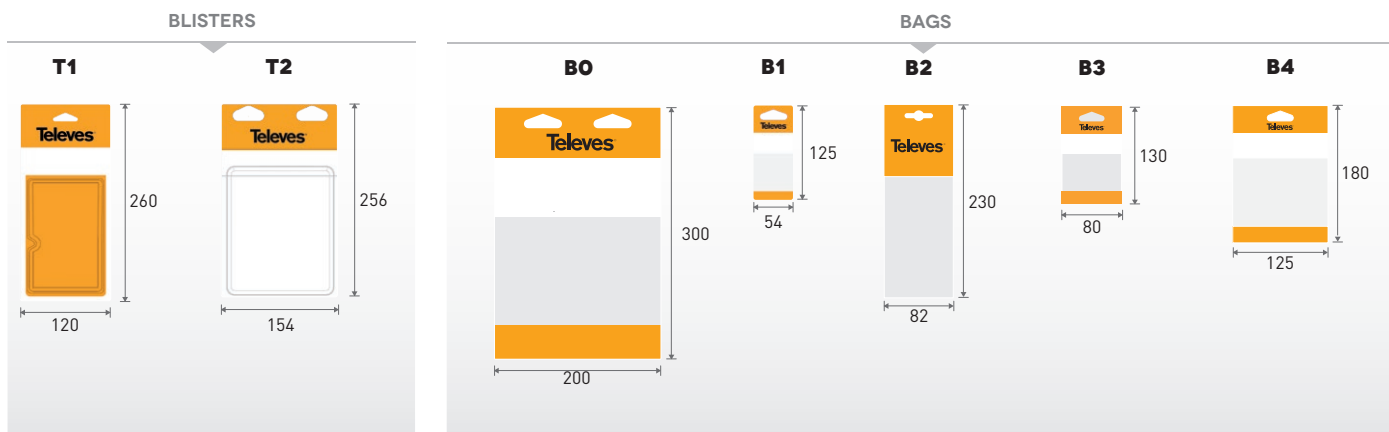
▲ 4361



▲ 4951

▲ 4952

Packaging types (mm)



A HIGH PERFORMANCE AND HIGH ACCURACY PORTABLE METER FOR PROFESSIONAL USERS

THE POWER OF USER EXPERIENCE

Its innovative **gesture-control tactile display** allows you to operate MOSAIQ6 like a smartphone or tablet, **managing up to 6 simultaneous real-time widgets** on its high resolutions 8" screen



ULTRA-FAST SPECTRUM ANALYSER
Real time digital processing



ALWAYS READY
Field-replaceable battery



EFFICIENT MANAGEMENT
Meter always updated with the cloud



ERGONOMICS
Optimized shape to maximize the effectiveness of movement





BOUND BY TECHNOLOGY

Televés Corporation is at the heart of a group of technological companies representing global leadership in desing and development of equipment for all types of telecom infrastructures in cities, buildings and homes.

Televés Corporation groups more than 20 companies that work together pursuing the common goal of designing, developing and manufacturing in Spain high quality products and solutions for various sectors in the field of telecommunications, such as transmission and distribution of television services, implementation of multiservice networks in Hospitality, development of advanced eHealth platforms, as well as integrating solutions for professional LED lighting projects.

Televés Corporation reaches over 100 countries directly through its 11 international subsidiaries (España, Portugal, France, United Kingdom, United Arab Emirates, Italia, United States, Deutschland, China, Polska, Russia, Scandinavia) and through an extensive network of professional distributors.